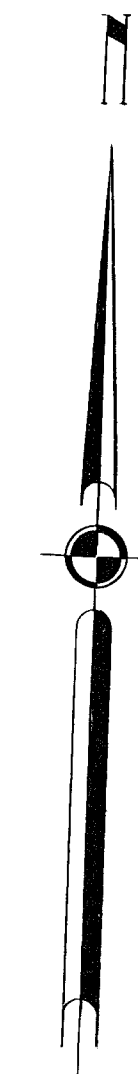


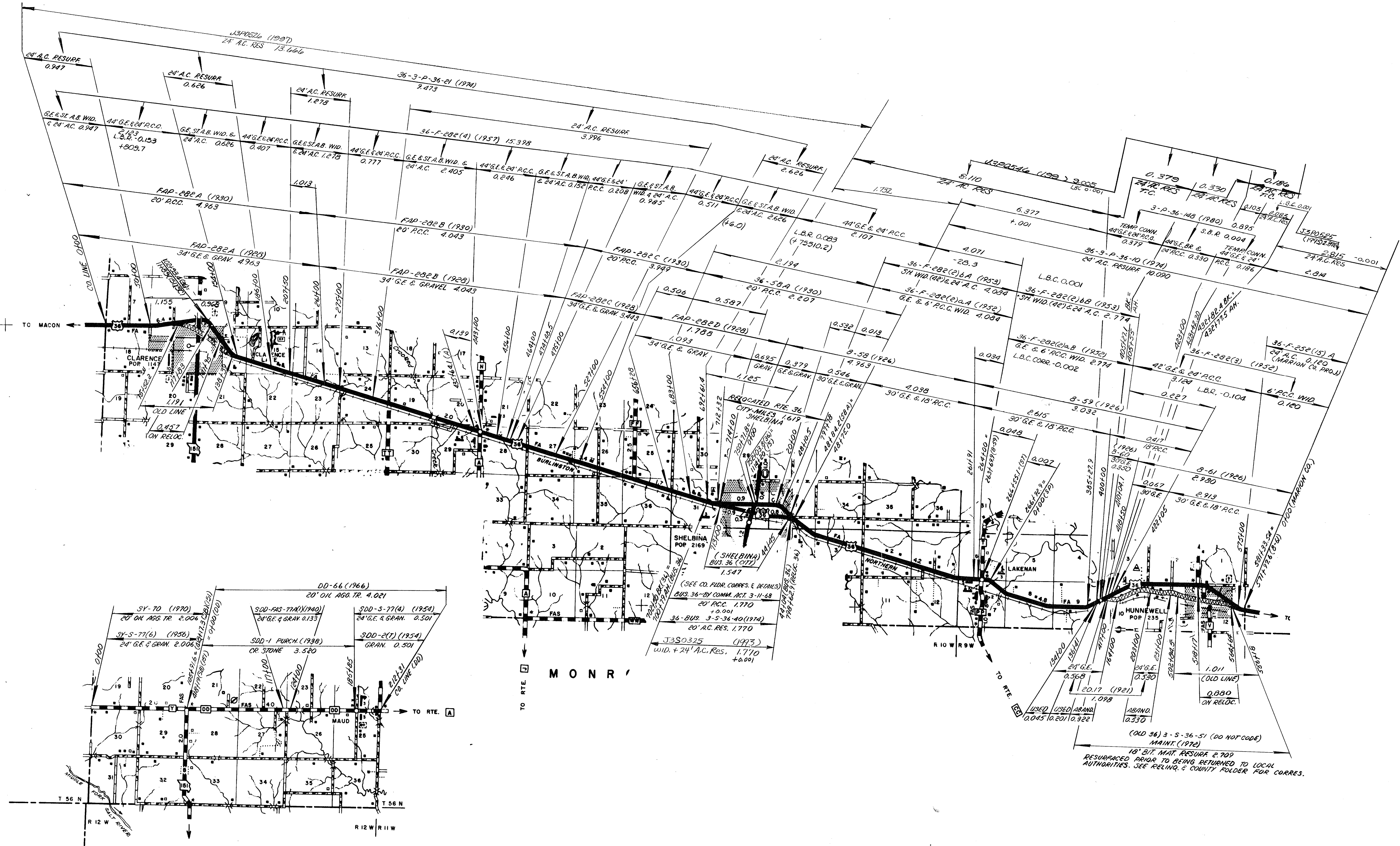
C O U N T Y

TC MACON



ROUTES 151(Part)  
15  
A  
M  
BB

③  
102 SHELBY  
SHEET 1 OF 7



ROUTES 36  
36 (BUS)  
Y  
DD

3

102 SHELB  
SHEET 2 OF 7

(OLD 36) 3-S-36-51 (DO NOT CODE)  
MAINT. (1972)  
18" BIT. MAT. RESURF. 2.700  
RESURFACED PRIOR TO BEING RETURNED TO LOCAL  
AUTHORITIES. SEE RELINQ. & COUNTY FOLDER FOR CORRES.



ROUTES 151(PART)  
B  
H  
MM

③

102

SHEET 3 OF 7

SHELBY

D-56 (1936)  
OIL AGG. 0.686

D-WPSS-570 C (1936)  
GRAN. 0.686

D-NRS-570 C (1936)  
24 O.E. 0.686

9.12373

TO RTE. 100

LEWIS COUNTY

COUNTY

MISSOURI

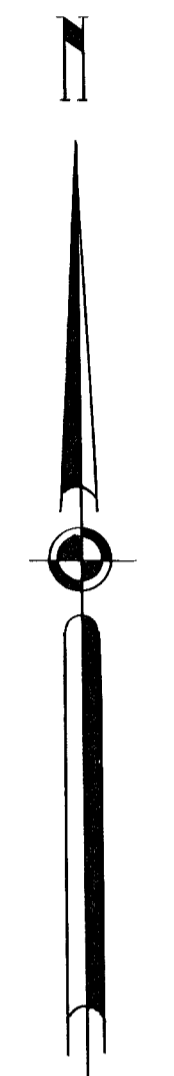
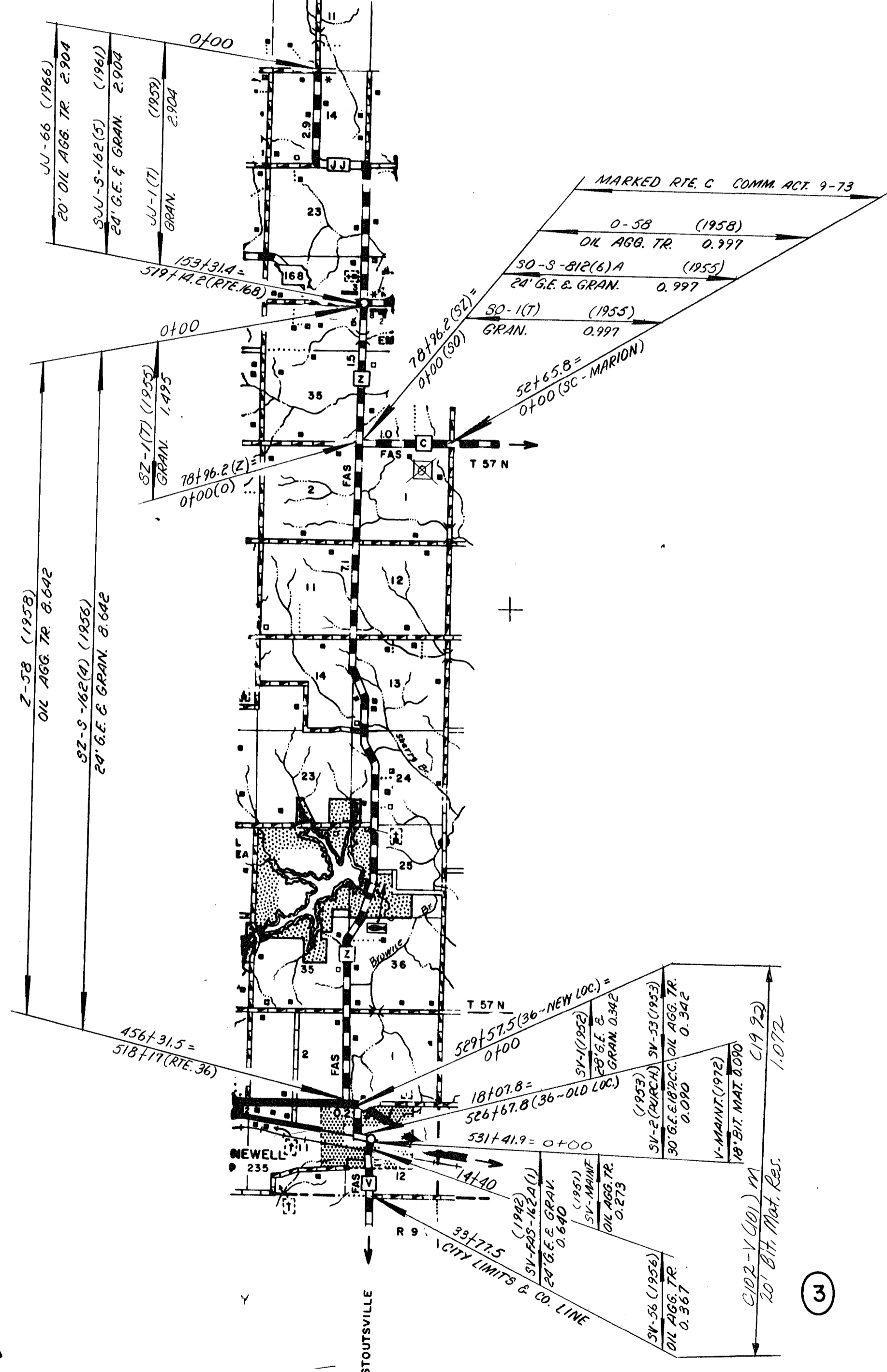
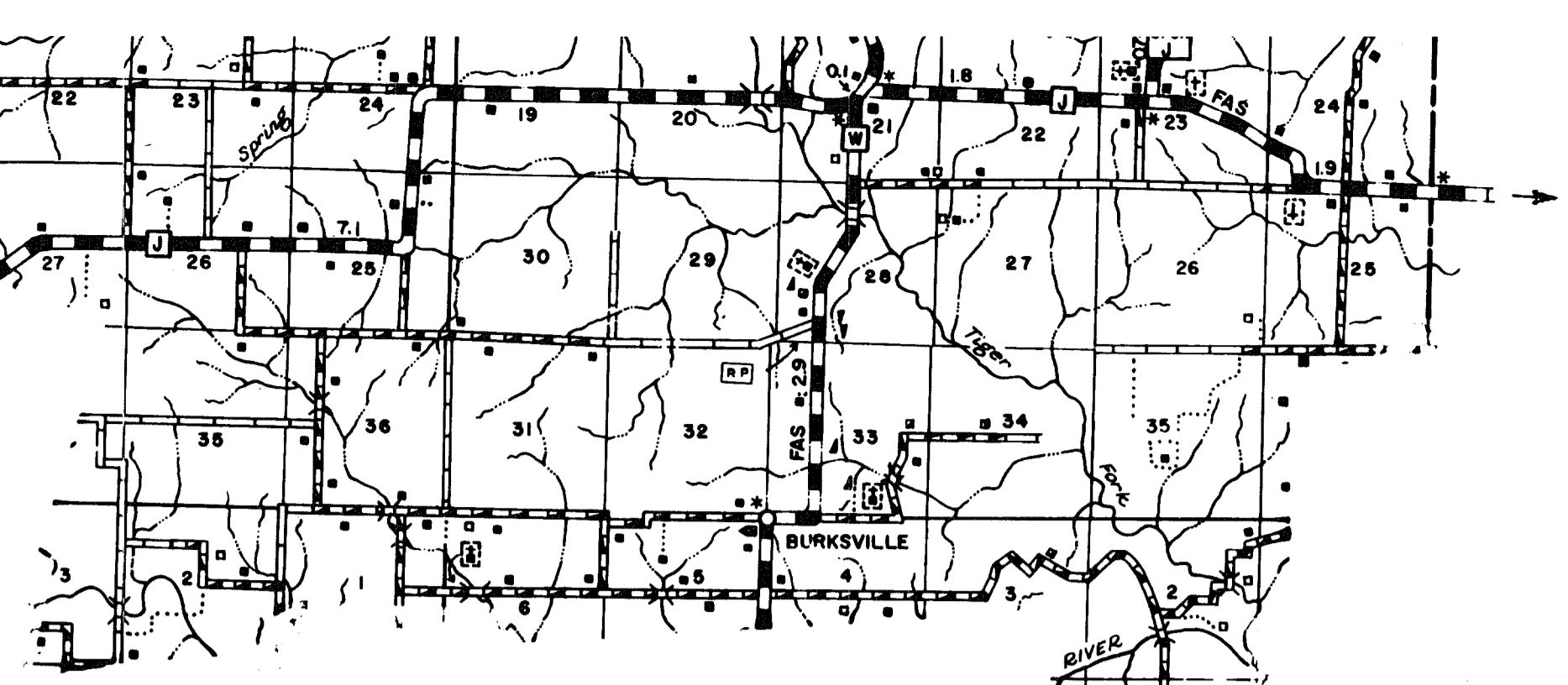
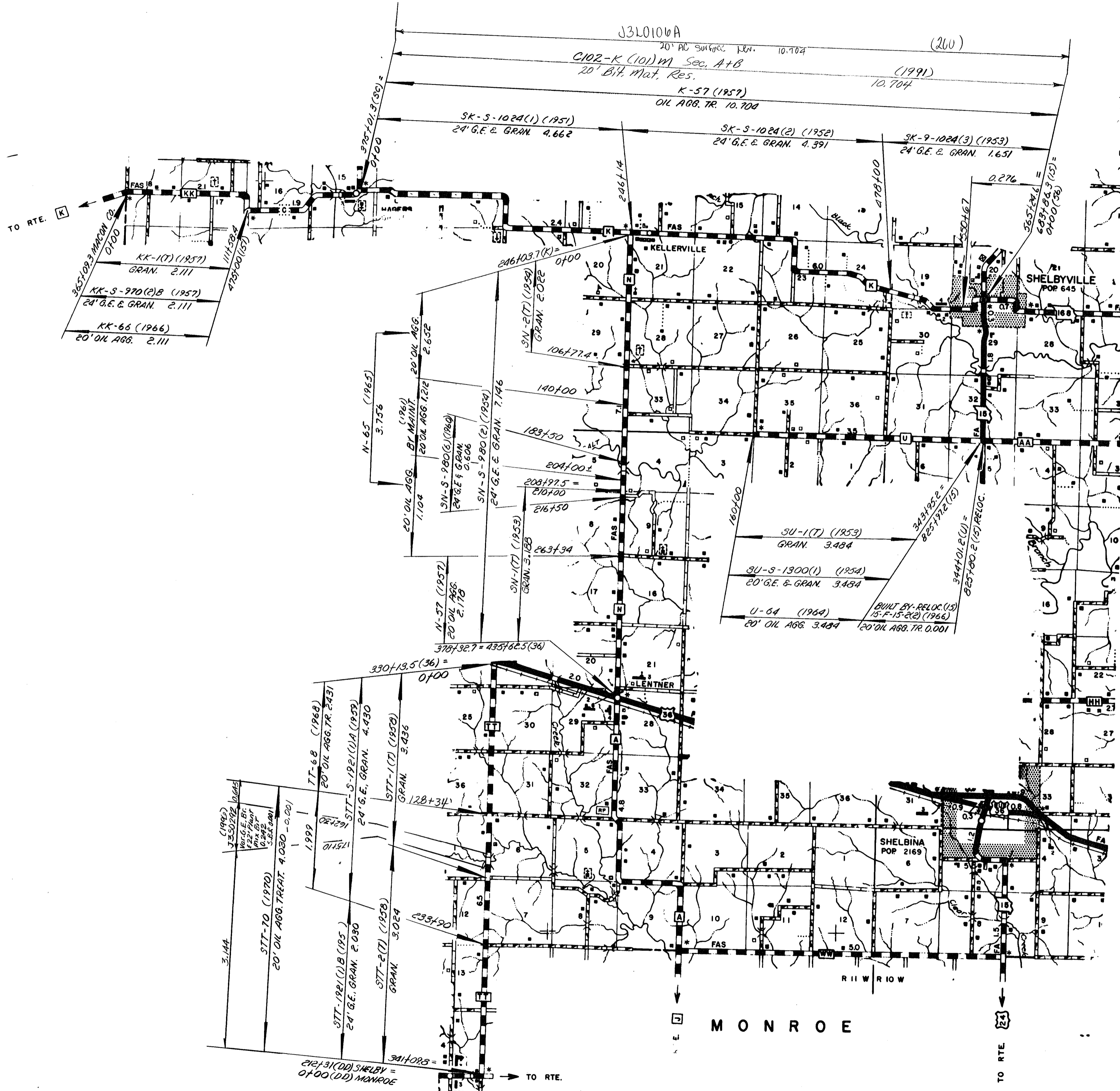
MONROE



ROUTES 168  
E  
D  
AA

③  
102  
SHELBY

SHEET 4 OF 7

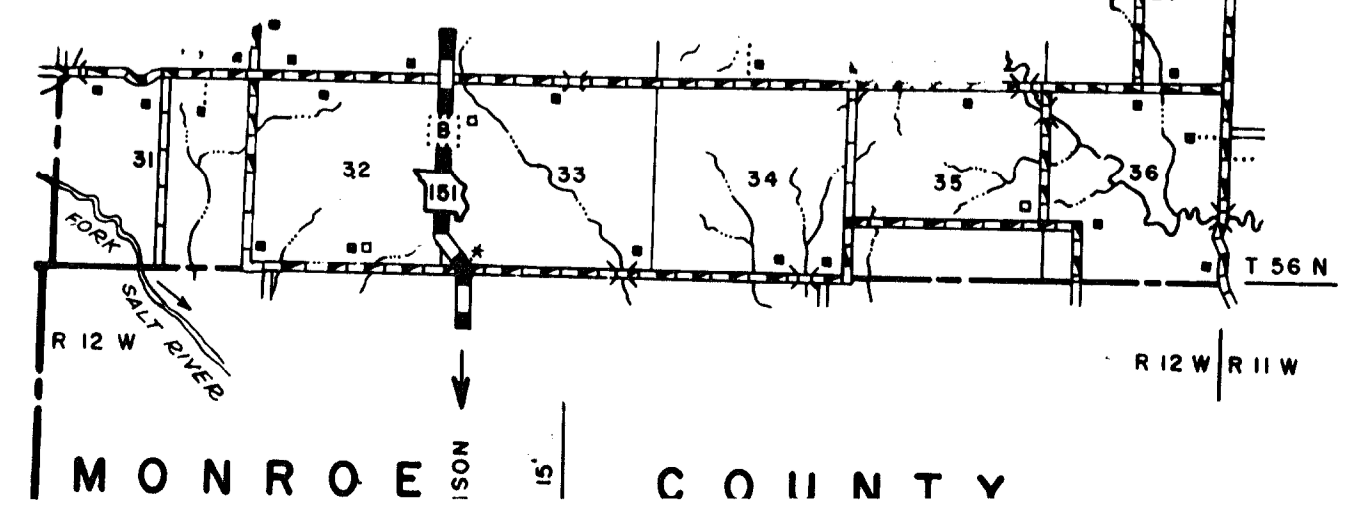


ROUTES C  
K  
N  
U  
Z  
V  
K  
J  
T

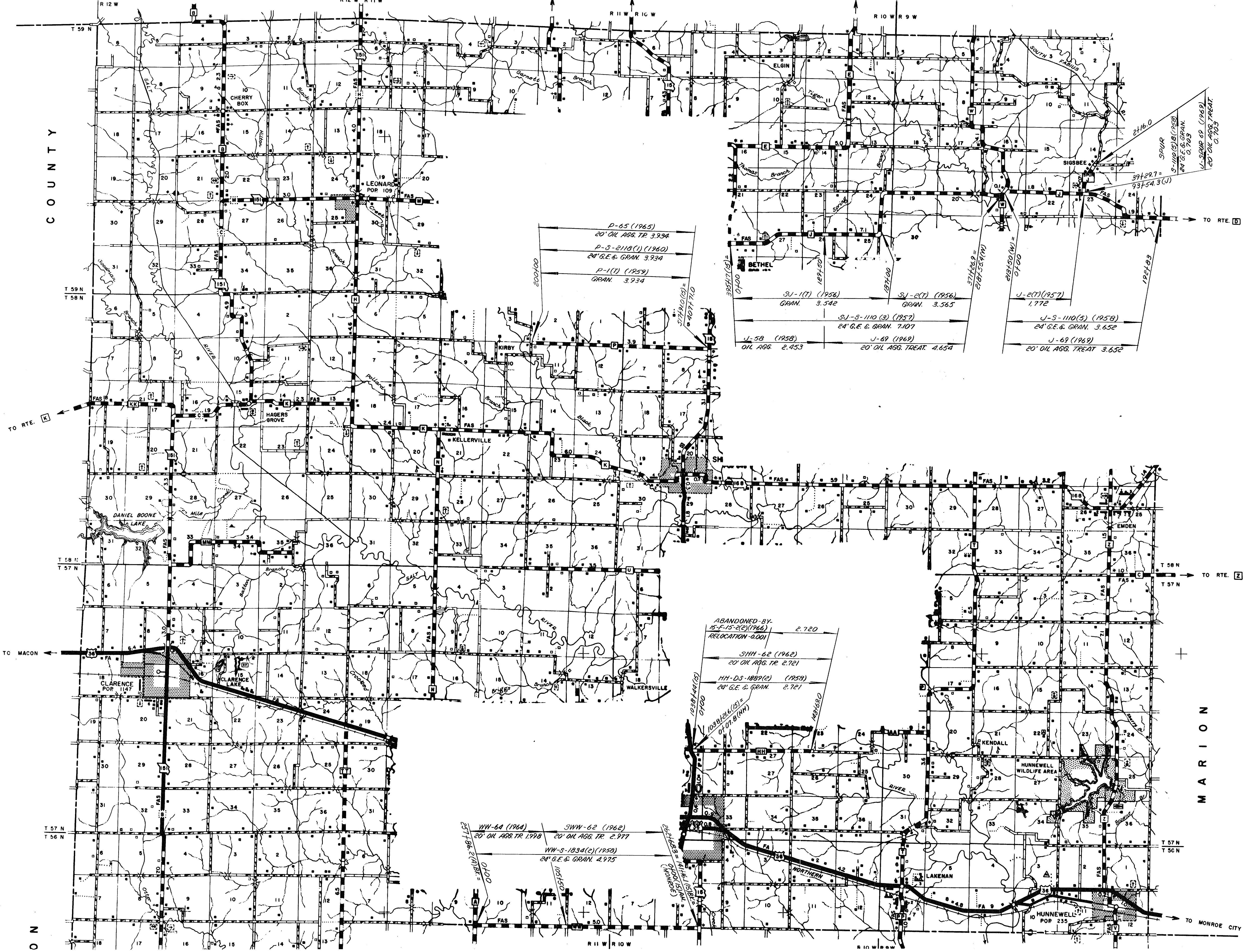
③

102 SHEET 5 OF 7

SHELBY



MONROE COUNTY



ROUTES J  
J (SPUR)  
P  
HH  
WW

③

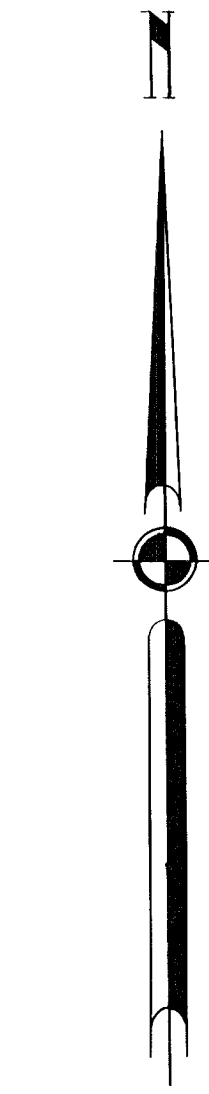
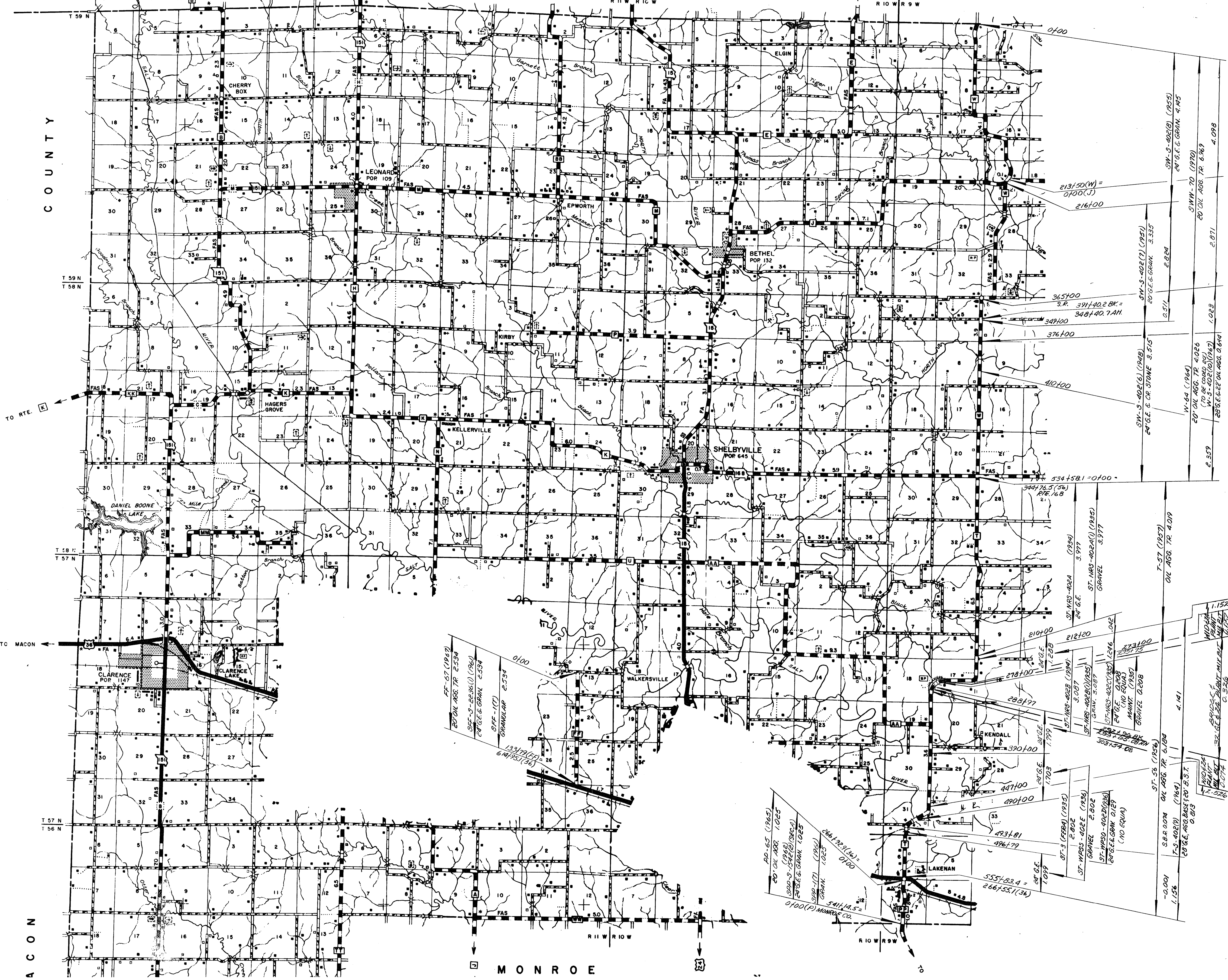
102

SHEET 6 OF 7

SHELBY

COUNTY

ACON



ROUTES T  
W  
FF  
PP

③  
102  
SHELBY

SHEET 7 OF 7