

093
 ST. CLAIR
 ROUTES: 13, PP
 SHEET 1 OF 12
 7

(Part in Henry Co.)
 J7P0428F
 24' PCC (NBL) UIP (NBL)
 0.398
 24' GE ONLY (Part in Henry Co.)

(Part in Polk Co.)
 B-P-485-13 (1993)
 24' AC. Res. 0.670
 0.001

13-F-100C-3 (1938)
 0.912
 13-F-100C-2 (1937)
 0.912
 13-F-100E-1 (1938)
 0.266
 13-F-100E-1 (1938)
 0.266
 13-F-100E-1 (1938)
 0.266

13-42A (1936)
 B.S.T. 3.326
 13-42B (1937)
 B.S.T. 3.326
 13-42C (1937)
 B.S.T. 3.326

13-40A (1928)
 30' GE & Grav. 3.566
 13-40B (1934)
 30' GE & Grav. 3.365
 13-40C (1924)
 24' GE & Grav. 3.537

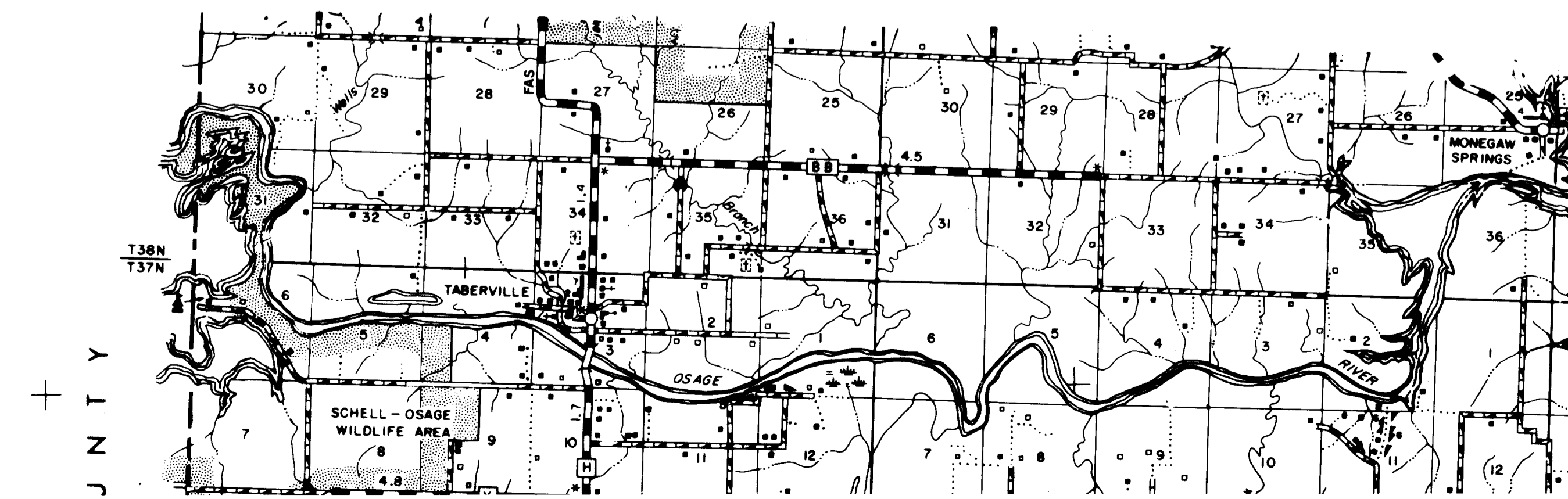
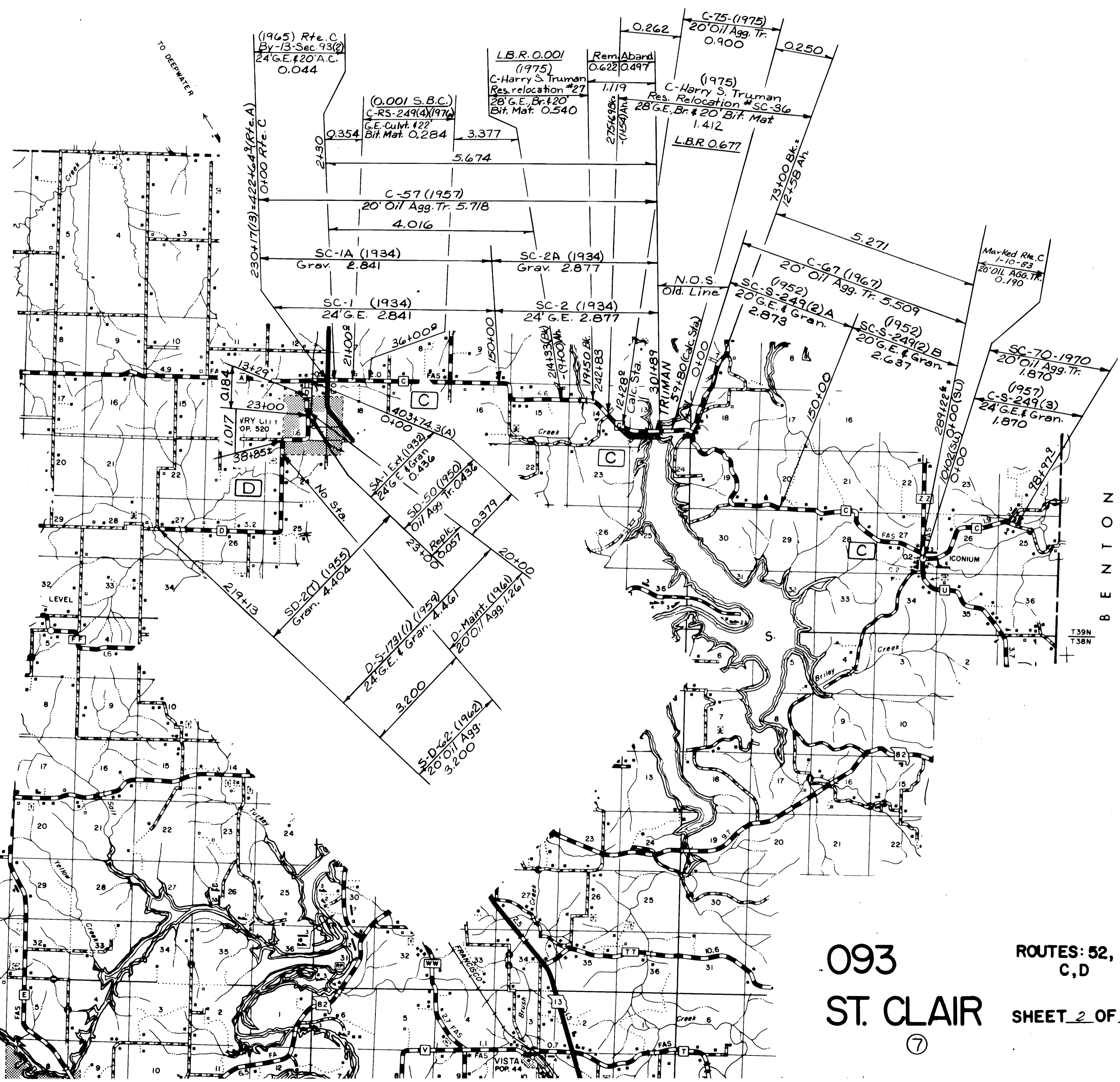
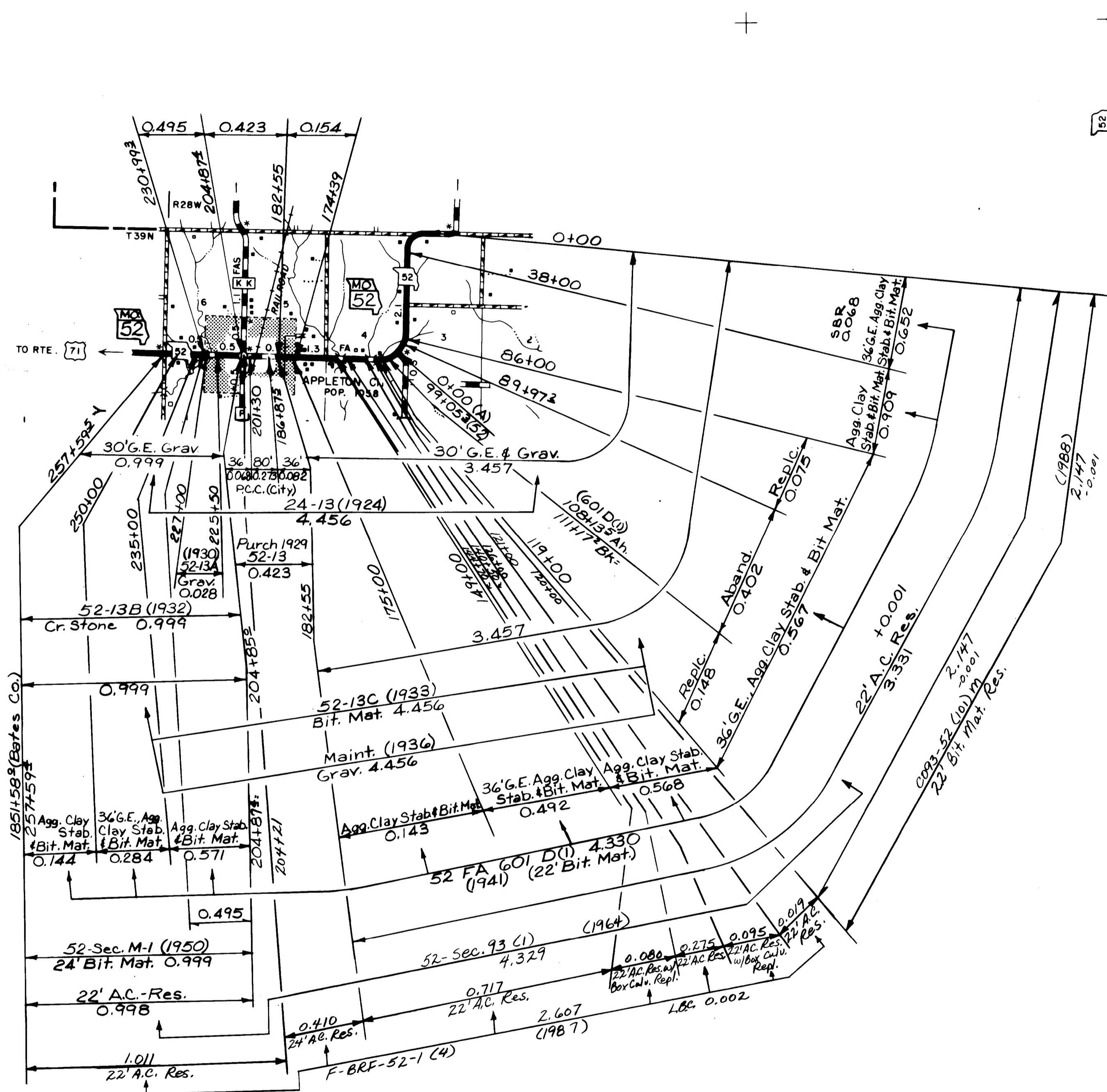
13-39 (1928)
 30' GE & Grav. 2.212
 13-38 (1927)
 30' GE & Grav. 3.174
 13-37 (1927)
 30' GE & Grav. 3.133

13-33 (1924)
 30' GE & Grav. 3.009
 13-32 (1924)
 30' GE & Grav. 3.009
 13-31 (1924)
 30' GE & Grav. 3.009

13-30 (1923)
 24' GE & Grav. 4.802
 13-29 (1923)
 24' GE & Grav. 4.802
 13-28 (1923)
 24' GE & Grav. 4.802

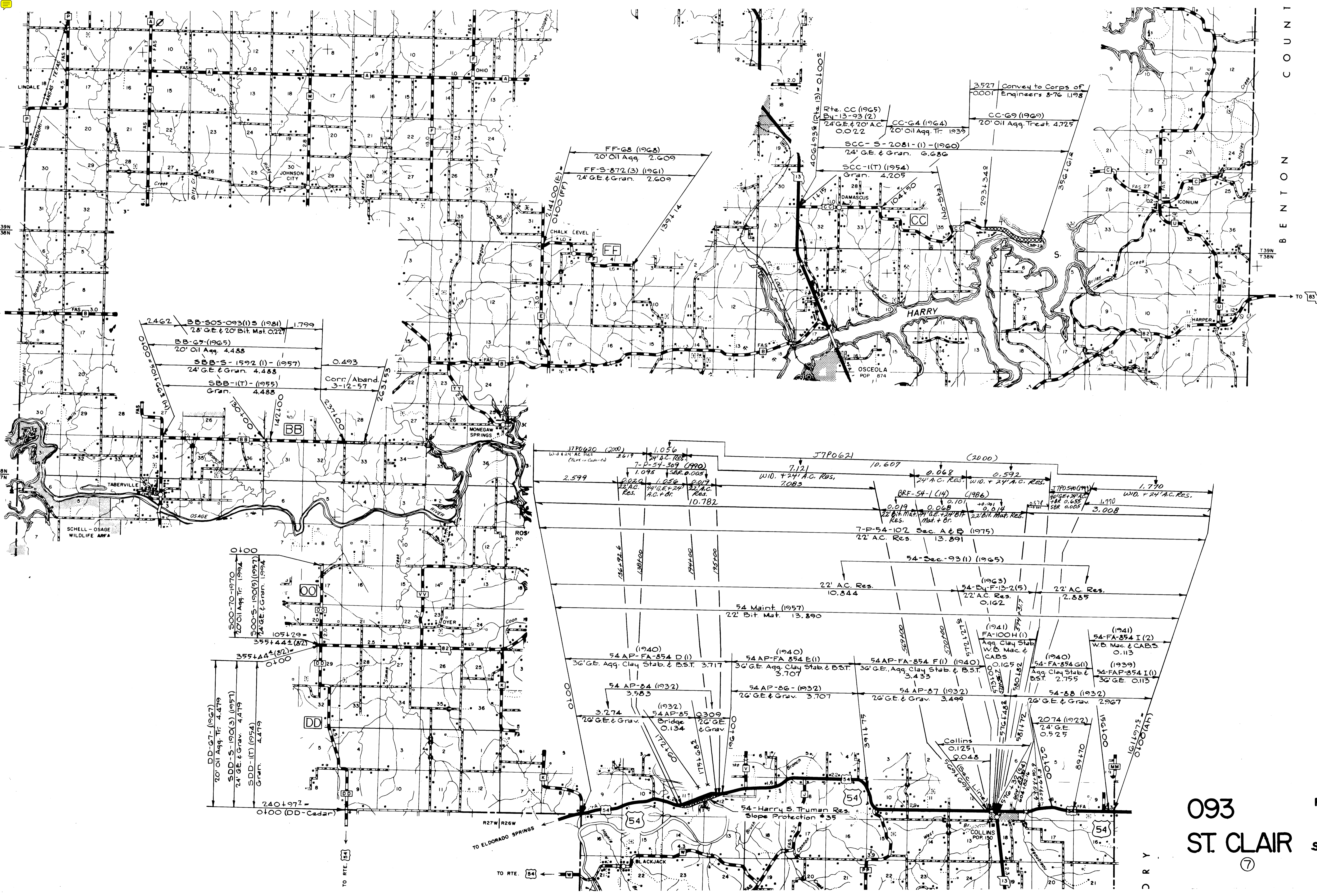
13-27 (1923)
 24' GE & Grav. 4.802
 13-26 (1923)
 24' GE & Grav. 4.802
 13-25 (1923)
 24' GE & Grav. 4.802

13-24 (1923)
 24' GE & Grav. 4.802
 13-23 (1923)
 24' GE & Grav. 4.802
 13-22 (1923)
 24' GE & Grav. 4.802



093
ST. CLAIR
⑦

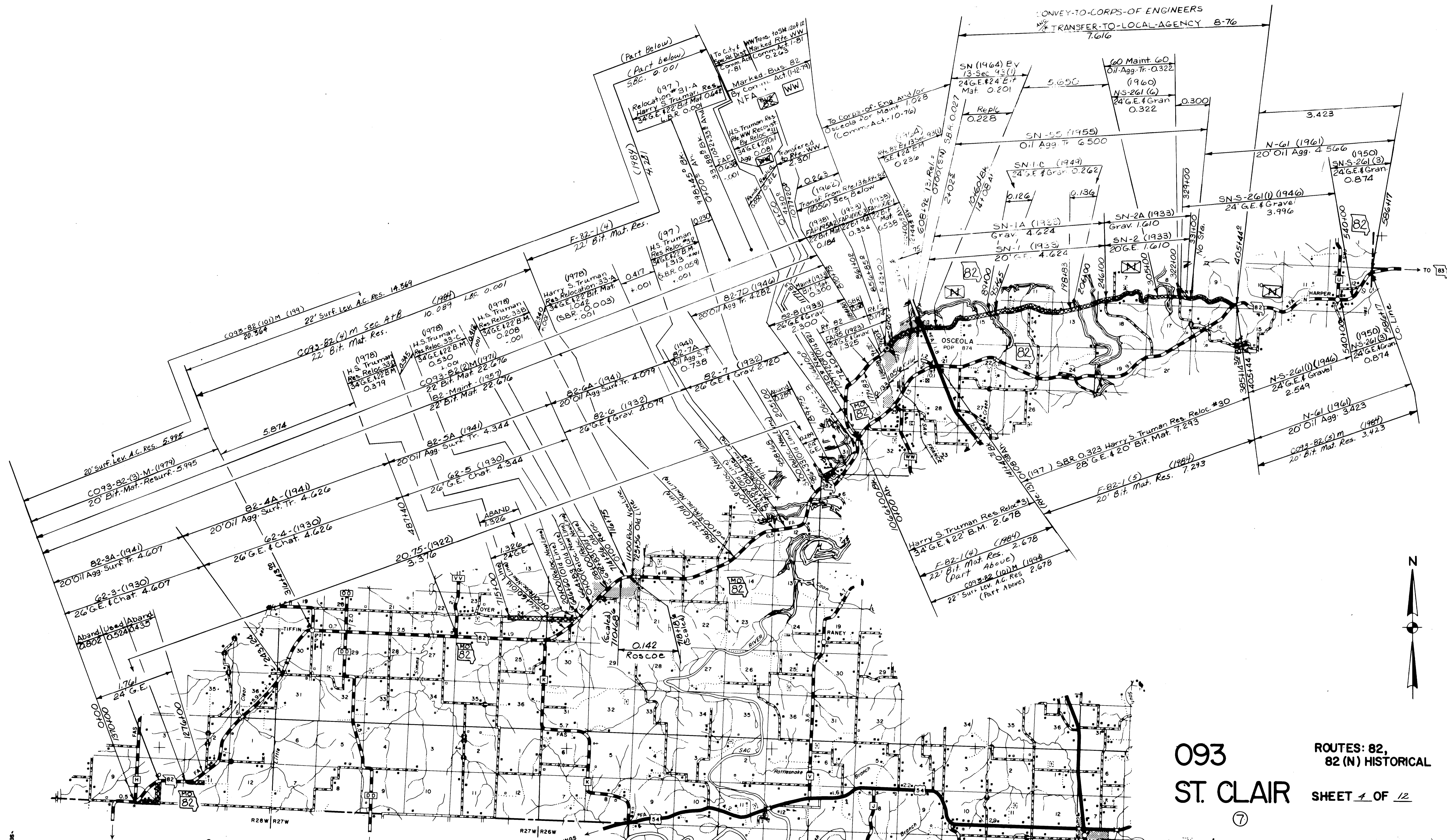
ROUTES: 52,
C, D
SHEET 2 OF 12



BENTON COUNTY

093
ST. CLAIR
⑦

ROUTES: 54, BB,
CC, DD, FF, OO
SHEET 3 OF 12



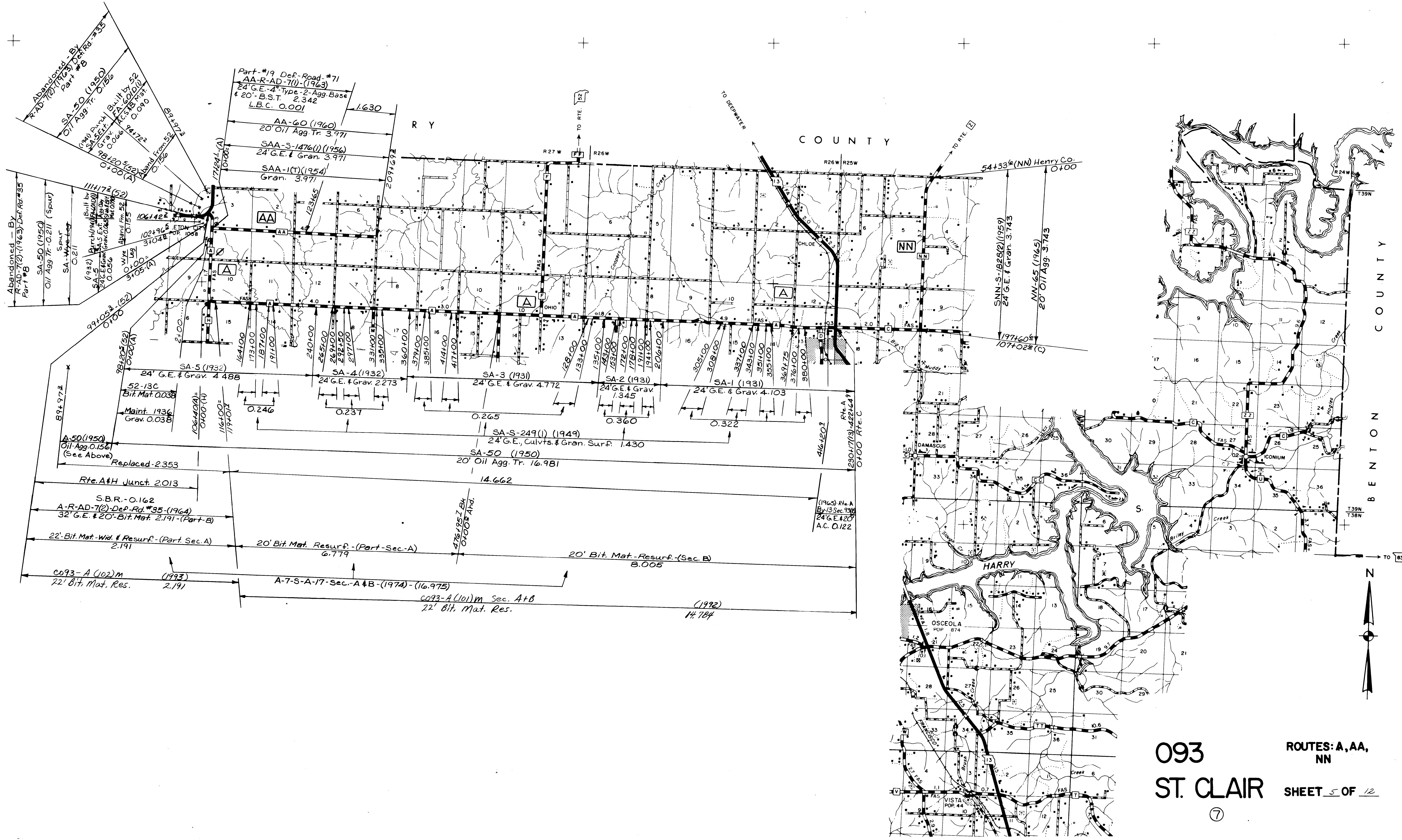
CONVEY TO CORPS OF ENGINEERS
 *TRANSFER TO LOCAL AGENCY 8-76
 7.616

093
ST. CLAIR

ROUTES: 82,
 82 (N) HISTORICAL

SHEET 4 OF 12

⑦



Abandoned - By
R-AD-7(2)-(1963) Def. Rd. #35
Part #8

SA-50 (1950)
Oil Agg. Tr. 0.211 (Spur)
SA-1-Water-Log
0.211

1114172 (52)
Built by
SA-5 (1932) Part #1
SA-5 (1932) Part #2
SA-5 (1932) Part #3
SA-5 (1932) Part #4
SA-5 (1932) Part #5
SA-5 (1932) Part #6
SA-5 (1932) Part #7
SA-5 (1932) Part #8
SA-5 (1932) Part #9
SA-5 (1932) Part #10
SA-5 (1932) Part #11
SA-5 (1932) Part #12
SA-5 (1932) Part #13
SA-5 (1932) Part #14
SA-5 (1932) Part #15
SA-5 (1932) Part #16
SA-5 (1932) Part #17
SA-5 (1932) Part #18
SA-5 (1932) Part #19
SA-5 (1932) Part #20
SA-5 (1932) Part #21
SA-5 (1932) Part #22
SA-5 (1932) Part #23
SA-5 (1932) Part #24
SA-5 (1932) Part #25
SA-5 (1932) Part #26
SA-5 (1932) Part #27
SA-5 (1932) Part #28
SA-5 (1932) Part #29
SA-5 (1932) Part #30
SA-5 (1932) Part #31
SA-5 (1932) Part #32
SA-5 (1932) Part #33
SA-5 (1932) Part #34
SA-5 (1932) Part #35
SA-5 (1932) Part #36
SA-5 (1932) Part #37
SA-5 (1932) Part #38
SA-5 (1932) Part #39
SA-5 (1932) Part #40
SA-5 (1932) Part #41
SA-5 (1932) Part #42
SA-5 (1932) Part #43
SA-5 (1932) Part #44
SA-5 (1932) Part #45
SA-5 (1932) Part #46
SA-5 (1932) Part #47
SA-5 (1932) Part #48
SA-5 (1932) Part #49
SA-5 (1932) Part #50
SA-5 (1932) Part #51
SA-5 (1932) Part #52
SA-5 (1932) Part #53
SA-5 (1932) Part #54
SA-5 (1932) Part #55
SA-5 (1932) Part #56
SA-5 (1932) Part #57
SA-5 (1932) Part #58
SA-5 (1932) Part #59
SA-5 (1932) Part #60
SA-5 (1932) Part #61
SA-5 (1932) Part #62
SA-5 (1932) Part #63
SA-5 (1932) Part #64
SA-5 (1932) Part #65
SA-5 (1932) Part #66
SA-5 (1932) Part #67
SA-5 (1932) Part #68
SA-5 (1932) Part #69
SA-5 (1932) Part #70
SA-5 (1932) Part #71
SA-5 (1932) Part #72
SA-5 (1932) Part #73
SA-5 (1932) Part #74
SA-5 (1932) Part #75
SA-5 (1932) Part #76
SA-5 (1932) Part #77
SA-5 (1932) Part #78
SA-5 (1932) Part #79
SA-5 (1932) Part #80
SA-5 (1932) Part #81
SA-5 (1932) Part #82
SA-5 (1932) Part #83
SA-5 (1932) Part #84
SA-5 (1932) Part #85
SA-5 (1932) Part #86
SA-5 (1932) Part #87
SA-5 (1932) Part #88
SA-5 (1932) Part #89
SA-5 (1932) Part #90
SA-5 (1932) Part #91
SA-5 (1932) Part #92
SA-5 (1932) Part #93
SA-5 (1932) Part #94
SA-5 (1932) Part #95
SA-5 (1932) Part #96
SA-5 (1932) Part #97
SA-5 (1932) Part #98
SA-5 (1932) Part #99
SA-5 (1932) Part #100

Part #19 Def. Road #71
AA-R-AD-7(1)-(1963)
24' G.E. 4-Type-2-Agg. Base
& 20'-B.S.T. 2,342
L.B.C. 0.001

AA-60 (1960)
20' Oil Agg. Tr. 3.971

SAA-S-1476(1) (1956)
24' G.E. & Gran. 3.971

SAA-1(T) (1954)
Gran. 3.971

SA-5 (1932)
24' G.E. & Grav. 4.488

SA-4 (1932)
24' G.E. & Grav. 2.273

SA-3 (1931)
24' G.E. & Grav. 4.772

SA-2 (1931)
24' G.E. & Grav. 1.345

SA-1 (1931)
24' G.E. & Grav. 4.103

SA-S-249(1) (1949)
24' G.E., Culvts. & Gran. Surf. 1.430

SA-50 (1950)
20' Oil Agg. Tr. 16.981

42'-195' Bk.
0.005' And.

20' Bit. Mat. Resurf. (Part Sec. A)
6.779

20' Bit. Mat. Resurf. (Sec. B)
8.005

14.662

14.784

14.784

14.784

SA-5 (1932)
24' G.E. & Grav. 4.488

SA-4 (1932)
24' G.E. & Grav. 2.273

SA-3 (1931)
24' G.E. & Grav. 4.772

SA-2 (1931)
24' G.E. & Grav. 1.345

SA-1 (1931)
24' G.E. & Grav. 4.103

SA-S-249(1) (1949)
24' G.E., Culvts. & Gran. Surf. 1.430

SA-50 (1950)
20' Oil Agg. Tr. 16.981

20' Bit. Mat. Resurf. (Part Sec. A)
6.779

20' Bit. Mat. Resurf. (Sec. B)
8.005

SA-5 (1932)
24' G.E. & Grav. 4.488

SA-4 (1932)
24' G.E. & Grav. 2.273

SA-3 (1931)
24' G.E. & Grav. 4.772

SA-2 (1931)
24' G.E. & Grav. 1.345

SA-1 (1931)
24' G.E. & Grav. 4.103

SA-S-249(1) (1949)
24' G.E., Culvts. & Gran. Surf. 1.430

SA-50 (1950)
20' Oil Agg. Tr. 16.981

20' Bit. Mat. Resurf. (Part Sec. A)
6.779

20' Bit. Mat. Resurf. (Sec. B)
8.005

SA-5 (1932)
24' G.E. & Grav. 4.488

SA-4 (1932)
24' G.E. & Grav. 2.273

SA-3 (1931)
24' G.E. & Grav. 4.772

SA-2 (1931)
24' G.E. & Grav. 1.345

SA-1 (1931)
24' G.E. & Grav. 4.103

SA-S-249(1) (1949)
24' G.E., Culvts. & Gran. Surf. 1.430

SA-50 (1950)
20' Oil Agg. Tr. 16.981

20' Bit. Mat. Resurf. (Part Sec. A)
6.779

20' Bit. Mat. Resurf. (Sec. B)
8.005

SA-5 (1932)
24' G.E. & Grav. 4.488

SA-4 (1932)
24' G.E. & Grav. 2.273

SA-3 (1931)
24' G.E. & Grav. 4.772

SA-2 (1931)
24' G.E. & Grav. 1.345

SA-1 (1931)
24' G.E. & Grav. 4.103

SA-S-249(1) (1949)
24' G.E., Culvts. & Gran. Surf. 1.430

SA-50 (1950)
20' Oil Agg. Tr. 16.981

20' Bit. Mat. Resurf. (Part Sec. A)
6.779

20' Bit. Mat. Resurf. (Sec. B)
8.005

SA-5 (1932)
24' G.E. & Grav. 4.488

SA-4 (1932)
24' G.E. & Grav. 2.273

SA-3 (1931)
24' G.E. & Grav. 4.772

SA-2 (1931)
24' G.E. & Grav. 1.345

SA-1 (1931)
24' G.E. & Grav. 4.103

SA-S-249(1) (1949)
24' G.E., Culvts. & Gran. Surf. 1.430

SA-50 (1950)
20' Oil Agg. Tr. 16.981

20' Bit. Mat. Resurf. (Part Sec. A)
6.779

20' Bit. Mat. Resurf. (Sec. B)
8.005

SA-5 (1932)
24' G.E. & Grav. 4.488

SA-4 (1932)
24' G.E. & Grav. 2.273

SA-3 (1931)
24' G.E. & Grav. 4.772

SA-2 (1931)
24' G.E. & Grav. 1.345

SA-1 (1931)
24' G.E. & Grav. 4.103

SA-S-249(1) (1949)
24' G.E., Culvts. & Gran. Surf. 1.430

SA-50 (1950)
20' Oil Agg. Tr. 16.981

20' Bit. Mat. Resurf. (Part Sec. A)
6.779

20' Bit. Mat. Resurf. (Sec. B)
8.005

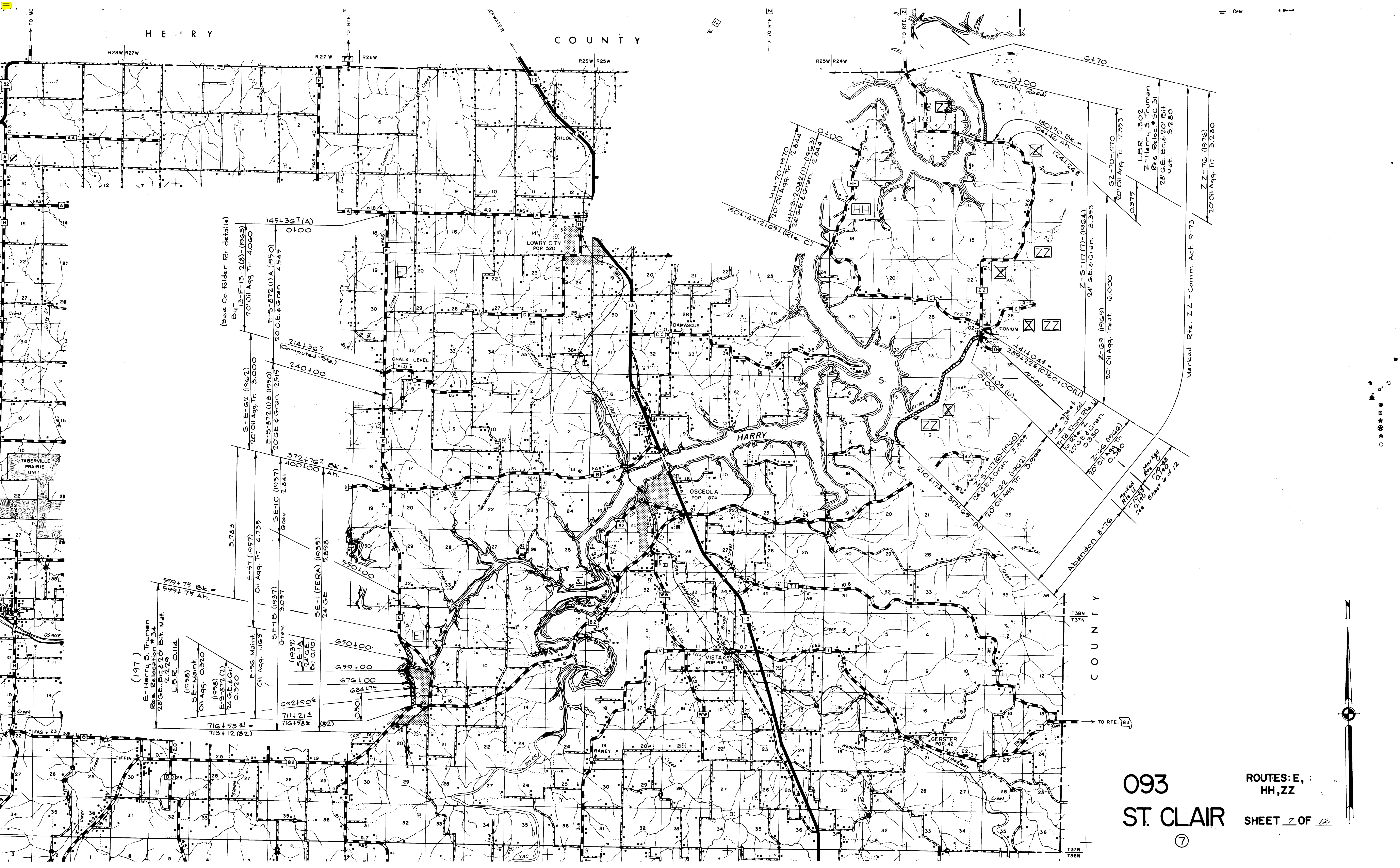
093
ST. CLAIR
7

ROUTES: A, AA,
NN
SHEET 5 OF 12



093
 ST. CLAIR
 ⑦

ROUTES: B, M,
 U, KK
 SHEET 6 OF 12



(See Co. Folder for details)
By-

13-F-13-2(8)-(1963)
20' Oil Agg. Tr. 4.060
S-E-G2 (1962)
20' Oil Agg. Tr. 3.000
E-S-872(1)A (1950)
20' GE & Gran. 4.545
2141362
(Computed-Sta.)
240+00

599+75 Bk.
599+75 Ah.
E-56 Maint.
Oil Agg. 1.163
E-57 (1957)
Oil Agg. Tr. 4.733
SE-1B (1937)
Grav. 3.097
SE-1C (1937)
Grav. 2.841
SE-1 (FERA) (1935)
24' GE. 5.856
716+53 1/2
713+12 (82)

(197)
E-Harry S. Truman
Res. Reloc. Plan #34
28' GE. Br. & 20' Dist. Mat.
2,722.9
L.P.R. 0.114
(1958)
SE-Maint.
Oil Agg. 0.320
(1958)
E-S-872(2)
24' GE & Gr.
0.320

HH-70-1970
20' Oil Agg. Tr. 2.844
HH-S-2082(1)-(1963)
24' GE & Gran. 2.844
150+14-12+69 (Rte. C)

Z-S-117 (7)-(1964)
24' GE & Gran. 8.353
Z-G9 (1969)
20' Oil Agg. Treat. 6.000
SZ-70-1970
20' Oil Agg. Tr. 2.353
0.375

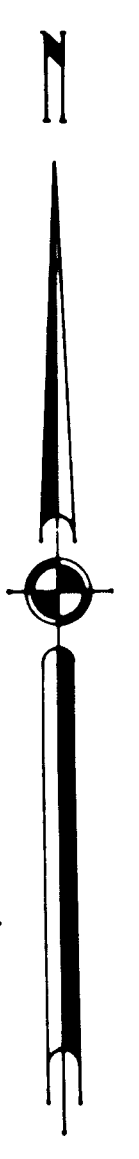
4411048
289+224 (C) 10+00 (U)
24' GE & Gran.
0.380
Z-S-117 (6)-(1960)
24' GE & Gran. 3.999
Z-G2 (1962)
20' Oil Agg. Tr. 3.999
210+173-37+65 (N)
20' Oil Agg. Tr. 0.380
Z-G6 (1966)
20' Oil Agg. Tr. 0.380
See sheet
HH-70-1970
20' GE & Gran.
0.380
Marked
Rte. 876
0+70
See Sheet 6 of 12

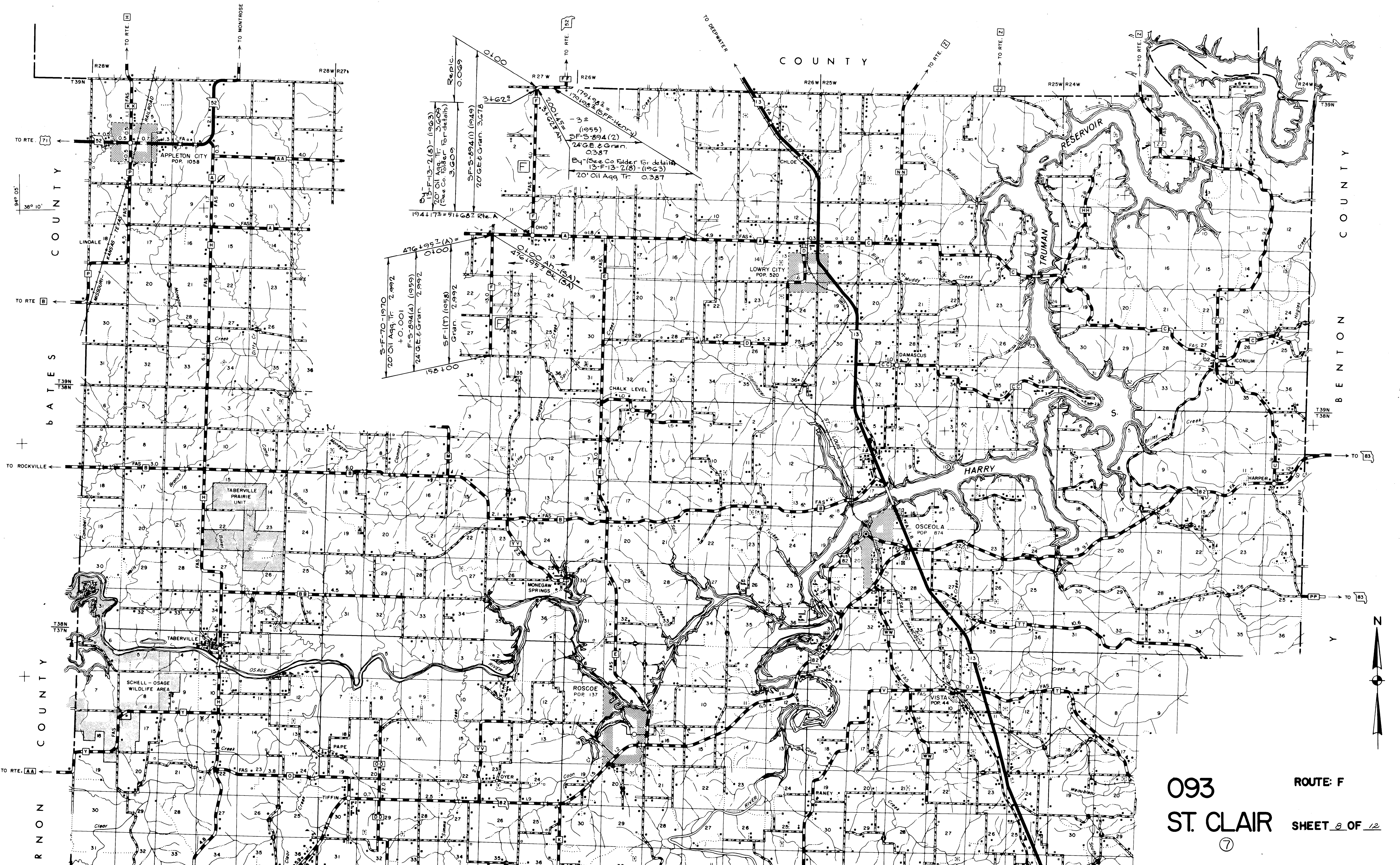
180+50 Bk.
104+146 Ah.
124+245
LIBR 1.302
Z-Harry S. Truman
Res. Reloc. Plan #31
28' GE. Br. & 20' Dist.
Mat. 5,728.0
Z-Z-76 (1976)
20' Oil Agg. Tr. 5,728.0

Marked Rte. ZZ - Comm. Act. 9-73

093
ST. CLAIR

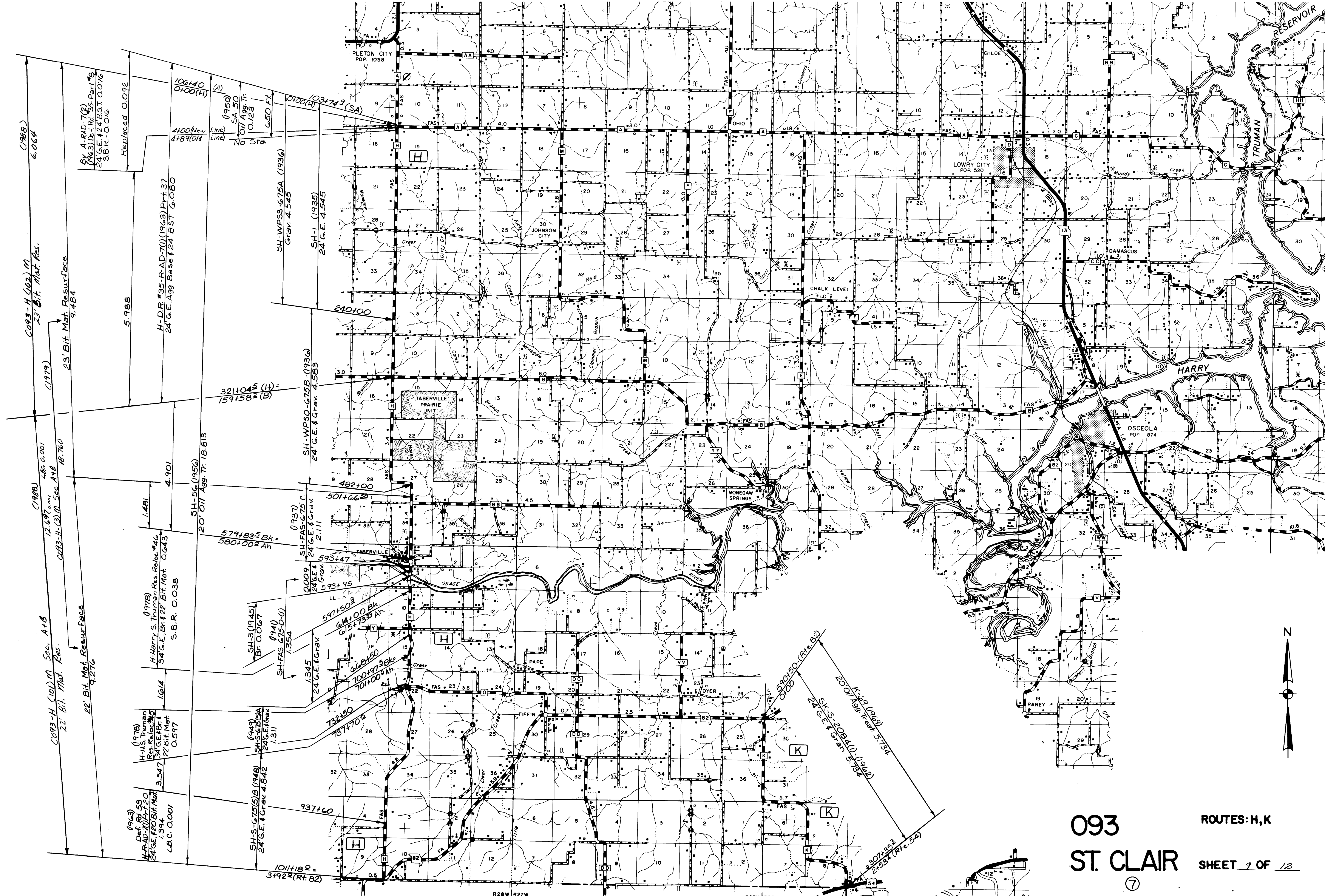
ROUTES: E, :
HH, ZZ
SHEET 7 OF 12





093
 ST. CLAIR
 ⑦

ROUTE: F
 SHEET 8 OF 12



COR3-H (101) M Sec. A+B
22' Bit. Mat. Resurf.
9,276
C1988
12,697,001 L.A. 0.001
COR3-H (101) M Sec. A+B
18,760
C1979
23' Bit. Mat. Resurf.
9,484
C1988
6,064
23' Bit. Mat. Res.

By A-RAD-7(2)
(7%3) Def. Rd. 35-Part #8
24 G.E. & Grav. 1248 ST. 0.076
S.B.R. 0.016
Replaced 0.092
5,988
H-DR #35-RAD-7(1)(1963) Part 37
24 G.E. & Grav. Base & 24' Bit. Mat. G.O.B.O.

(1963)
Def. Rd. 53
A-RAD-7(1) Part 120
24 G.E. & Grav. 1248 ST. 0.076
L.B.C. 0.001
3,547
H-4 S Truman Res. Reloc. #4
34 G.E. & Grav. 1248 ST. 0.076
S.B.R. 0.038
1,614
H-Harry S. Truman Res. Reloc. #46
34 G.E. & Grav. 1248 ST. 0.076
S.B.R. 0.038
1,481
SH-5G (1956)
20' OIT Agg. Tr. 18,813

(1949)
SH-S-G75(S)B (1948)
24 G.E. & Grav. 4,842
1,311
SH-3 (1945)
Br. O.O.G.7
1,354
SH-FAS-G75-b-(1)
24 G.E. & Grav. 2,111
SH-FAS-G75-C
24 G.E. & Grav. 2,111
SH-WPSO-G75B (1936)
24 G.E. & Grav. 4,583
SH-WPSS-G75A (1936)
Grav. 4,545
SH-1 (1935)
24 G.E. 4,545

1011+80 =
3492+82 (Rt. 82)
937+60
732+50
737+70
100+973 Bk
701+009 Ah
608+150
614+00 Bk
615+733 Ah
597+503
598+47
593+95
579+835 Bk
580+009 Ah

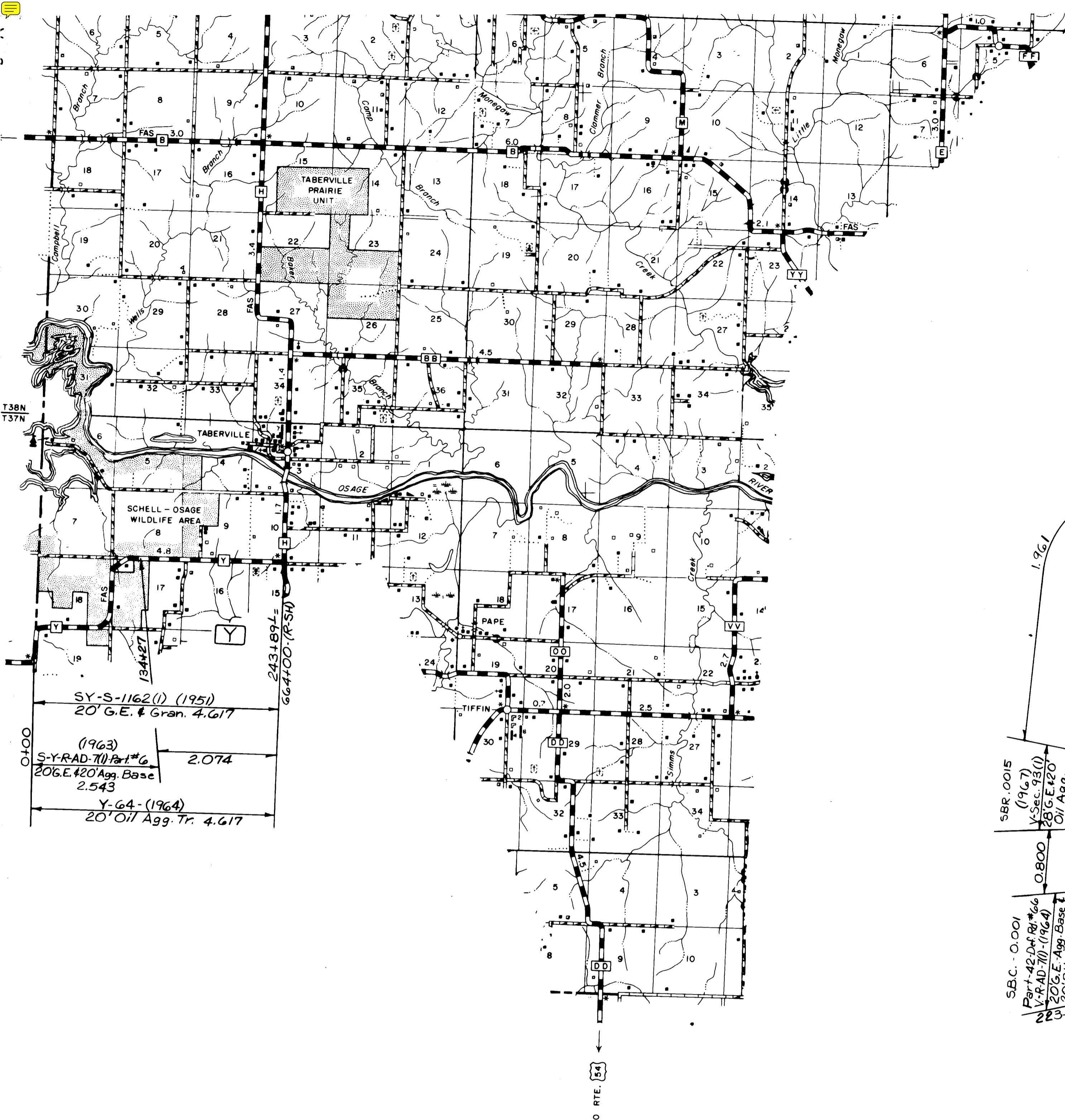
240+00
321+045 (H) =
159+582 (B)

103+743 (SA)
106+40
0+00 (H)

290+50 (Rt. 82)
0+00
201+01 Agg. Resurf. 5,734
1+68 (1968)
201+01 Agg. Resurf. 5,734
24 G.E. & Grav. 5,734
201+503
2453+ (Rt. 54)

093
ST. CLAIR
7

ROUTES: H,K
SHEET 9 OF 12

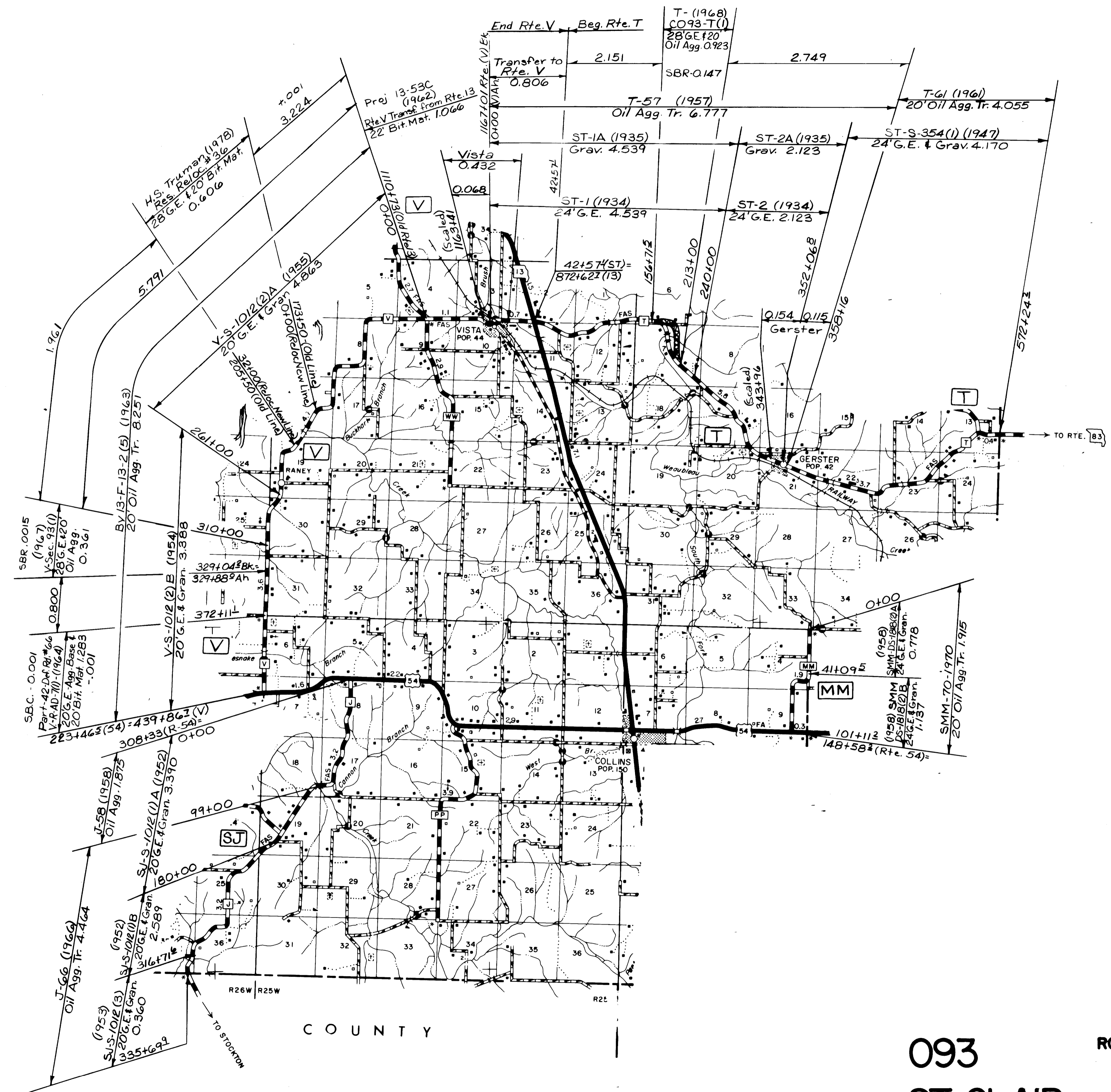


SY-S-1162(1) (1951)
20' G.E. & Gran. 4.617

(1963)
S-Y-RAD-7(1) Part #6
206.E. & 20' Agg. Base
2.543

Y-G4-(1964)
20' Oil Agg. Tr. 4.617

TO RTE. 54



H.S. Truman (1978)
Res. Reloc. # 36
28 G.E. & 20' Bit. Mat.
0.606

Proj 13-53C
(1962)
Rte V Trans from Rte 13
22 Bit. Mat. 1.066

SBR-0015
(1967)
V-Sec. 93(1)
28 G.E. & 20'
Oil Agg. Tr.
0.361

BY 13-F-13-2 (5) (1963)
20' Oil Agg. Tr. 8.251

V-S-1012 (2) B (1954)
20 G.E. & Gran. 3.358

J-58 (1958)
Oil Agg. Tr. 1.875

S-S-1012 (2) A (1952)
20 G.E. & Gran. 3.370

J-66 (1964)
Oil Agg. Tr. 4.464

S-S-1012 (3) (1952)
20 G.E. & Gran. 2.589

S-S-1012 (1) A (1952)
20 G.E. & Gran. 3.370

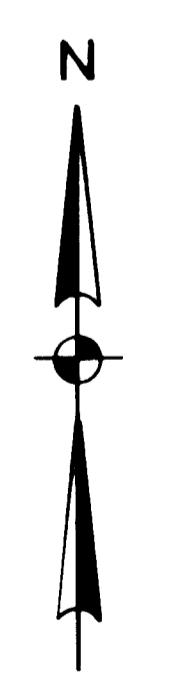
S-S-1012 (1) B (1952)
20 G.E. & Gran. 3.370

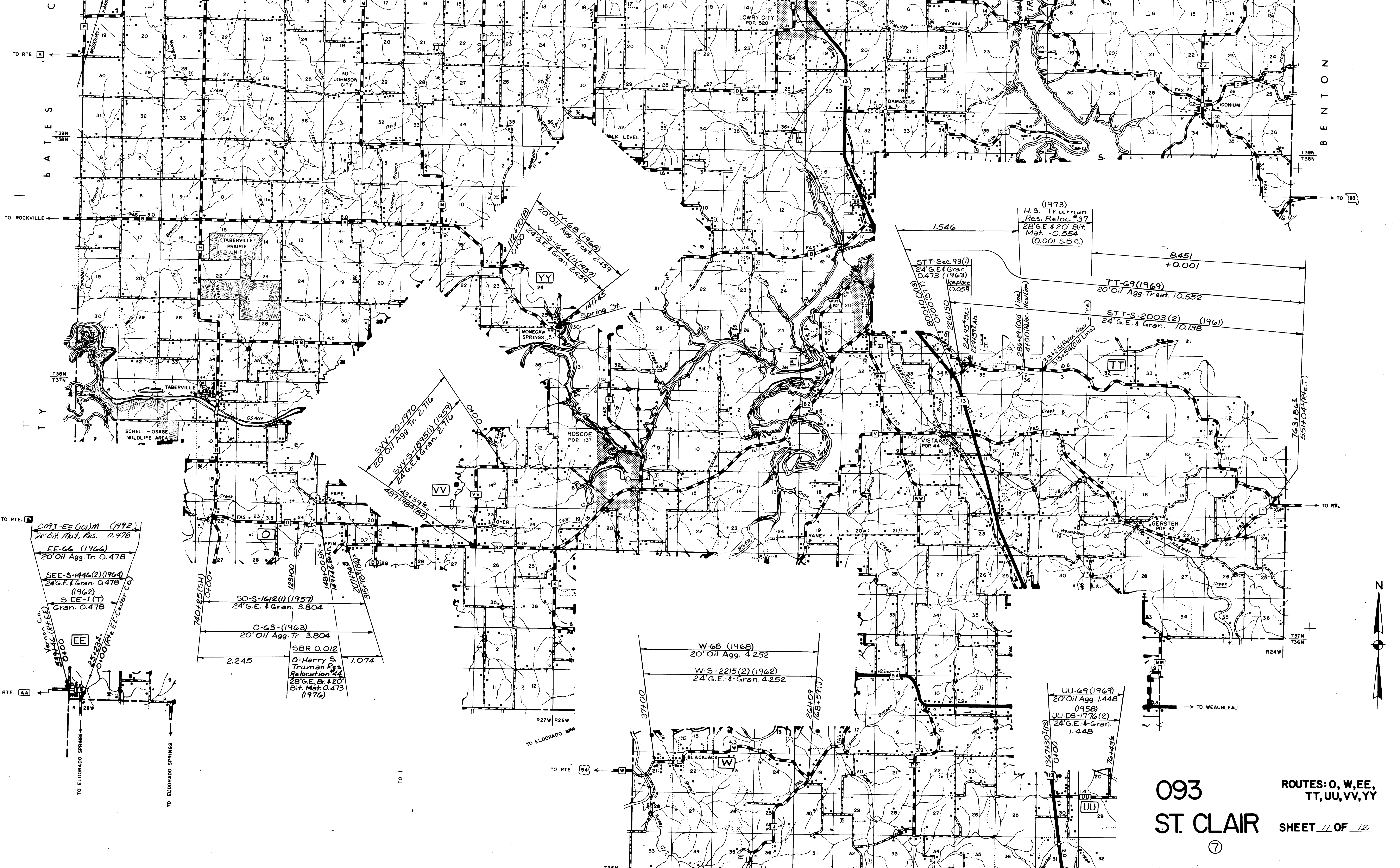
COUNTY

093
ST. CLAIR

ROUTES: J, T,
V, Y, MM

SHEET 10 OF 12





TO RTE. [B]
 TO ROCKVILLE
 TO RTE. [A]
 TO ELDOORDO SPRINGS
 TO ELDOORDO SPRINGS

B A T E S
 T39N
 T38N
 T37N
 T36N
 B E N T O N
 TO [83]

TO RTE. [A]
 TO ELDOORDO SPRINGS
 TO ELDOORDO SPRINGS

TO RTE. [A]
 TO ELDOORDO SPRINGS
 TO ELDOORDO SPRINGS

TO ELDOORDO SPRINGS
 TO ELDOORDO SPRINGS

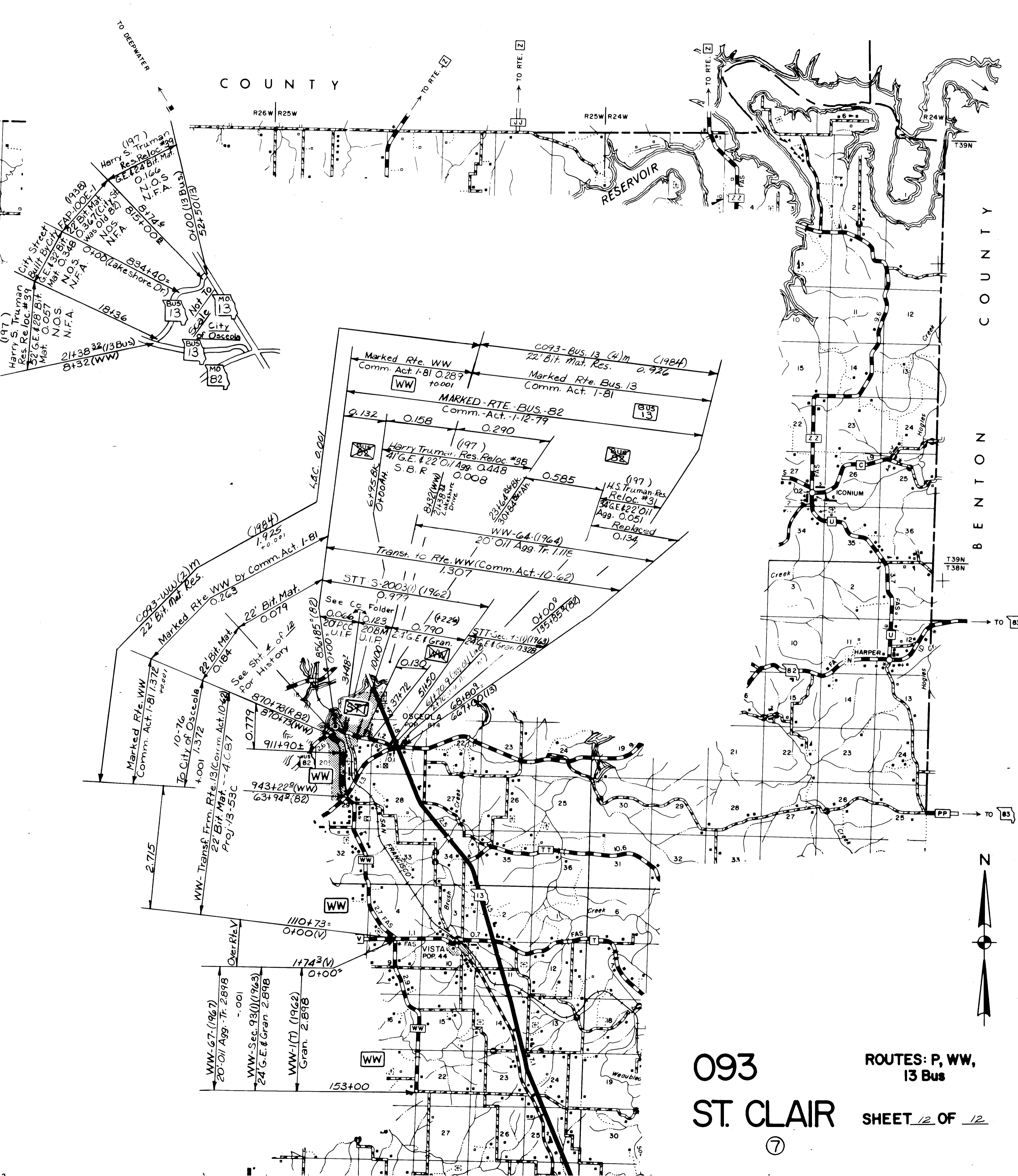
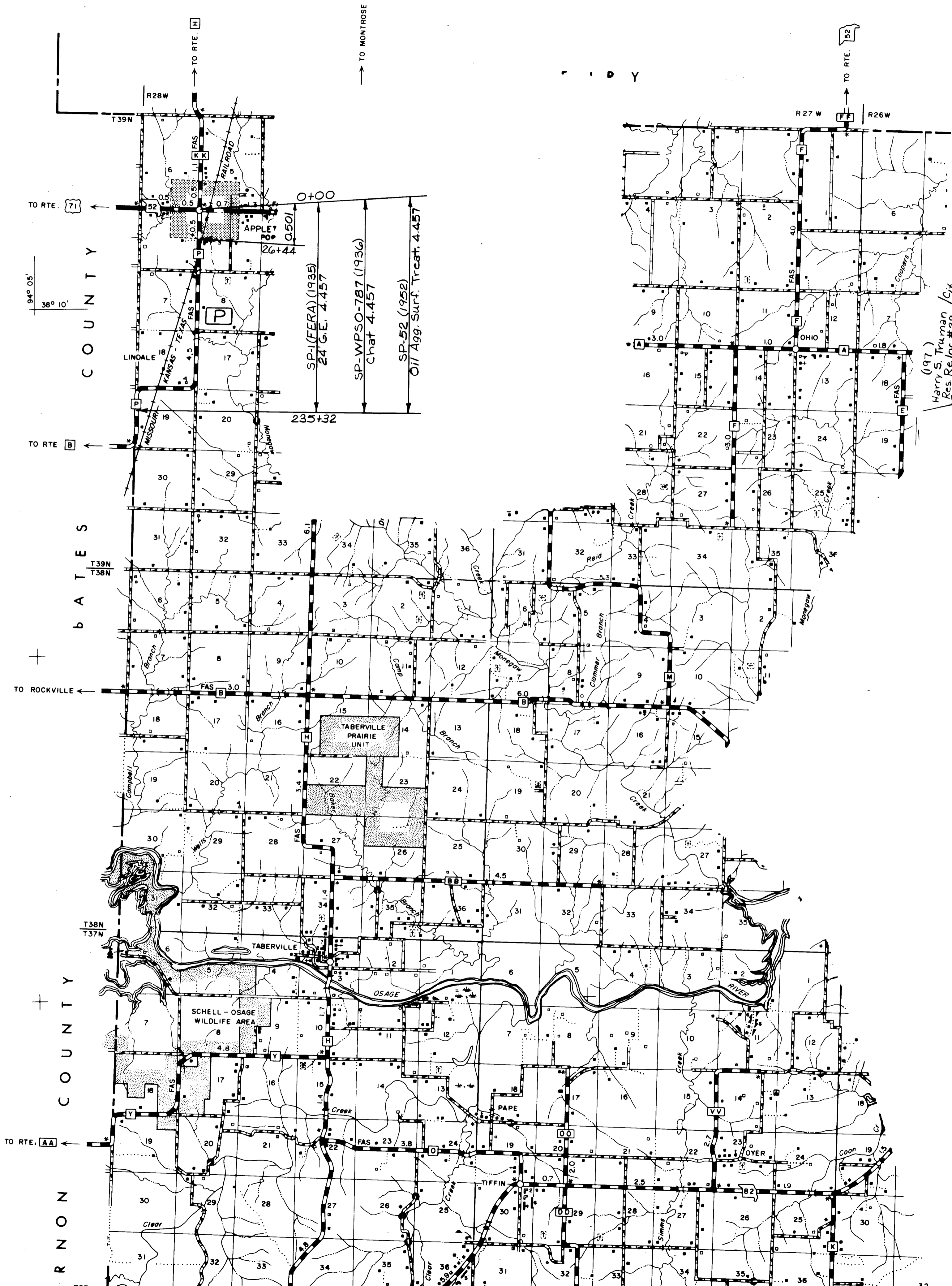
TO ELDOORDO SPRINGS
 TO ELDOORDO SPRINGS

TO ELDOORDO SPRINGS
 TO ELDOORDO SPRINGS

TO ELDOORDO SPRINGS
 TO ELDOORDO SPRINGS

093
 ST. CLAIR
 ⑦

ROUTES: O, W, EE,
 TT, UU, VV, YY
 SHEET 11 OF 12



093
 ST. CLAIR
 ⑦

ROUTES: P, WW,
 13 Bus

SHEET 12 OF 12