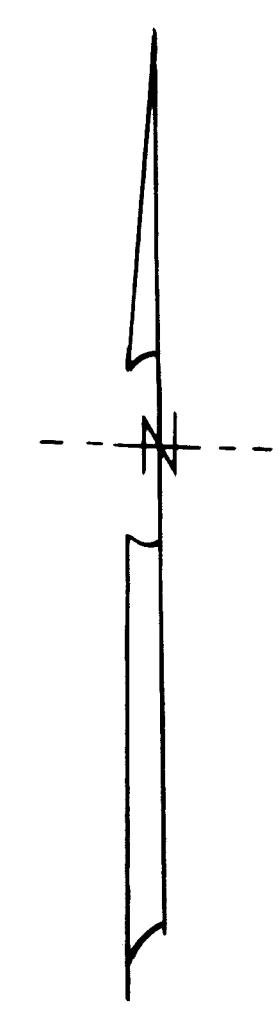
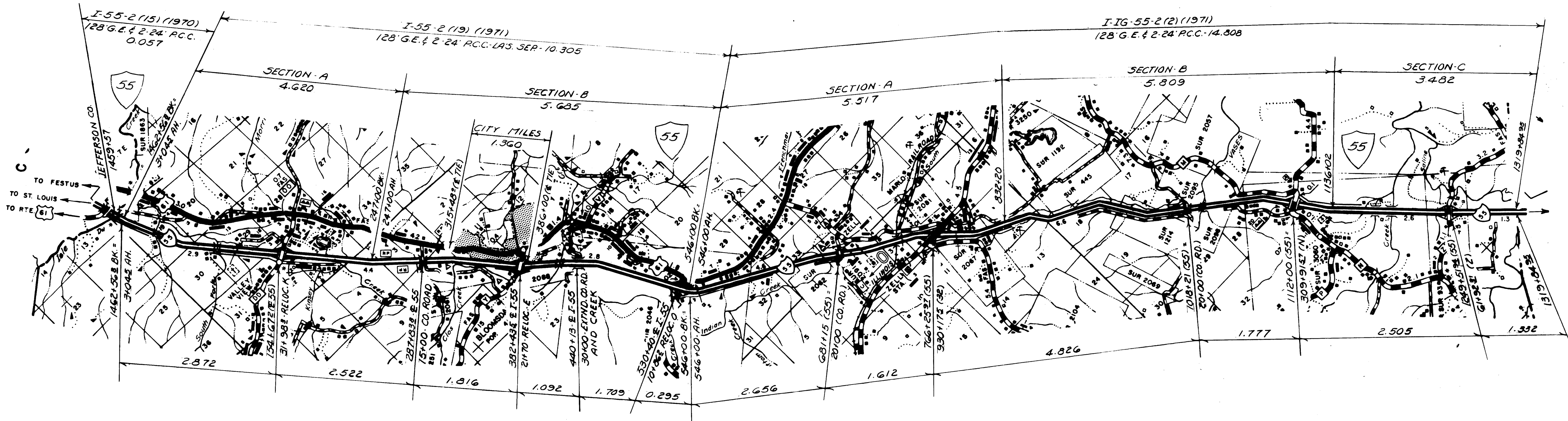
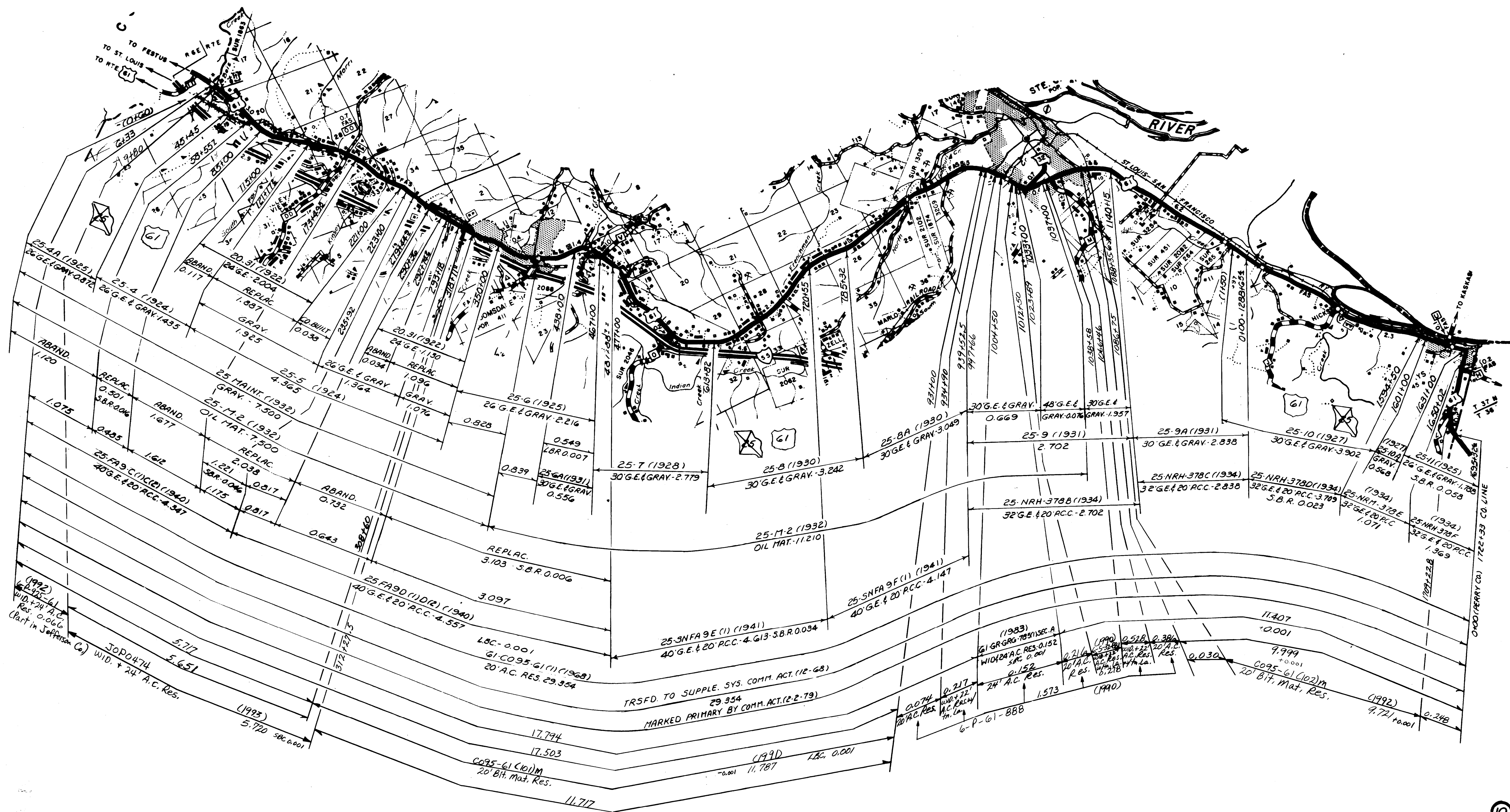


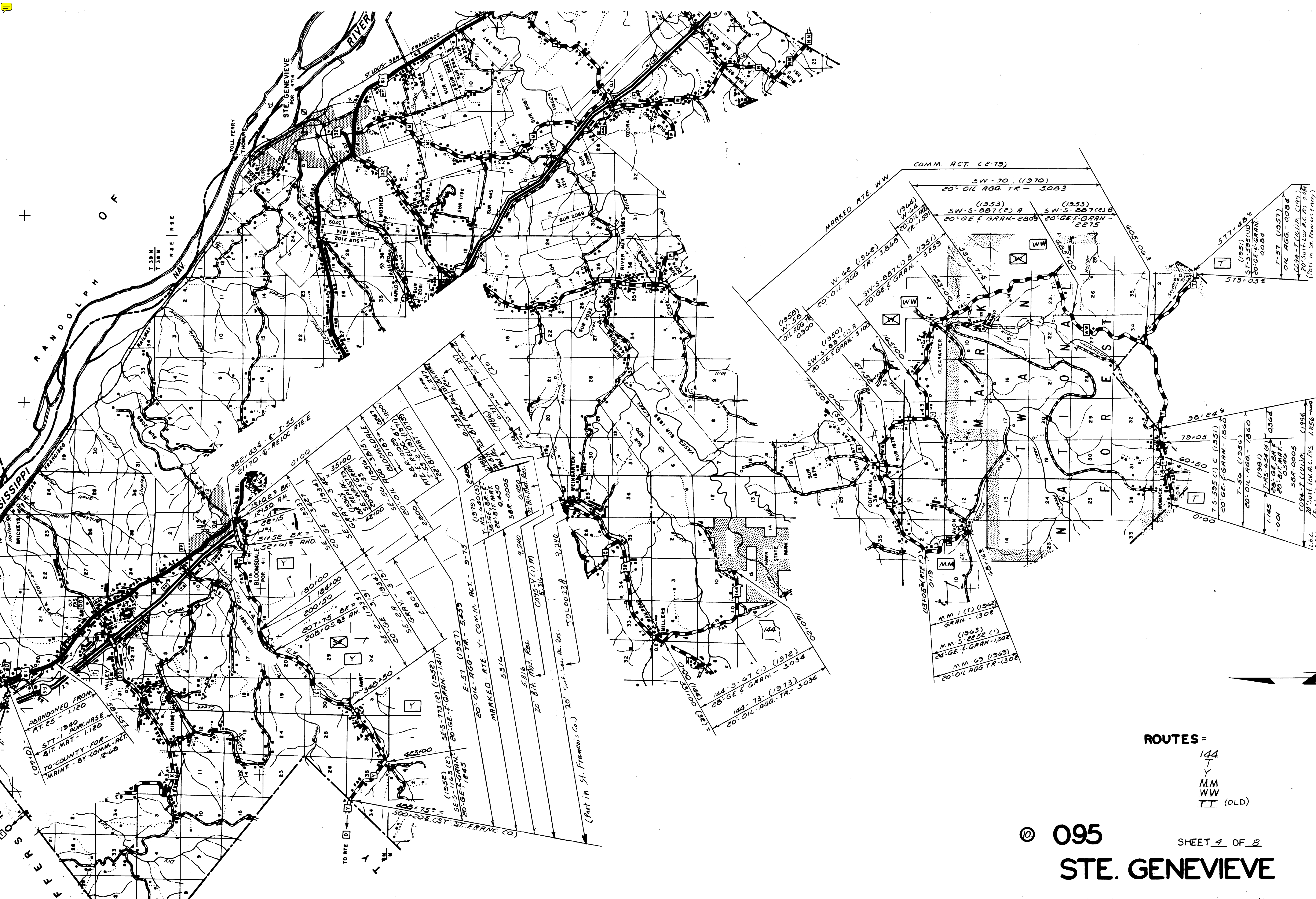
ROUTES
32
Z
CC



ROUTE 55
 ©
 STE. GENEVIEVE-095
 SHEET 2 OF 8



ROUTE: 61



ABANDONED FROM
RT. 25 - 1.120
1940
STT-1 PURCHASE
BY RT. MAT. - 1.120
TO COUNTY FOR
MAINT. BY COMM. ACT
12-60

382+03.4 & E-55
2170' E-RELOC. RTE. E
10150' RH
51152 BK =
521412 AND
BLOOMSDALE
POP. 411

(1982) (E)
SE-S-773(C) (1952)
SE-S-1163(E)
20' GE. E. GRAN. - 1411
20' GE. E. GRAN. - 1845

E-57 (1957)
20' OIL AGG. TR. - 5259
MARKED RTE. Y. COMM. ACT. - 9-73
531/6

5316
20' BTH. Nat. Res.
CORP. Y (1) M
E-316

20' Surf. Law. Ac. Res.
TO LOO.23A
9,240

(part in St. Francois Co.)
20' Surf. Law. Ac. Res.
TO LOO.23A
9,240

144-5-67 (1) (1972)
28' GE. E. GRAN. - 3034

184-73- (1973)
20' OIL AGG. TR. - 3034

(1958)
W-58
OIL AGG. TR. - 0900

(1950)
SW-S-887(C) A
20' GE. E. GRAN. - 3100

(1964)
W-62
20' OIL AGG. TR. - 3860

(1953)
SW-S-887(C) B
20' GE. E. GRAN. - 3259

(1962)
MM-1 (T)
GRAN. - 1302

(1963)
MM-S-2852 (1)
24' GE. E. GRAN. - 1302

(1969)
MM-69
20' OIL AGG. TR. - 1302

COMM. ACT (E-79)

SW-70 (1970)
20' OIL AGG. TR. - 5083

(1953)
SW-S-887(C) A
20' GE. E. GRAN. - 2809

(1953)
SW-S-887(C) B
20' GE. E. GRAN. - 2275

79+05
T-S-595 (1) C (1951)
20' GE. F. GRAN. - 1860

T-56 (1954)
20' OIL AGG. TR. - 1860

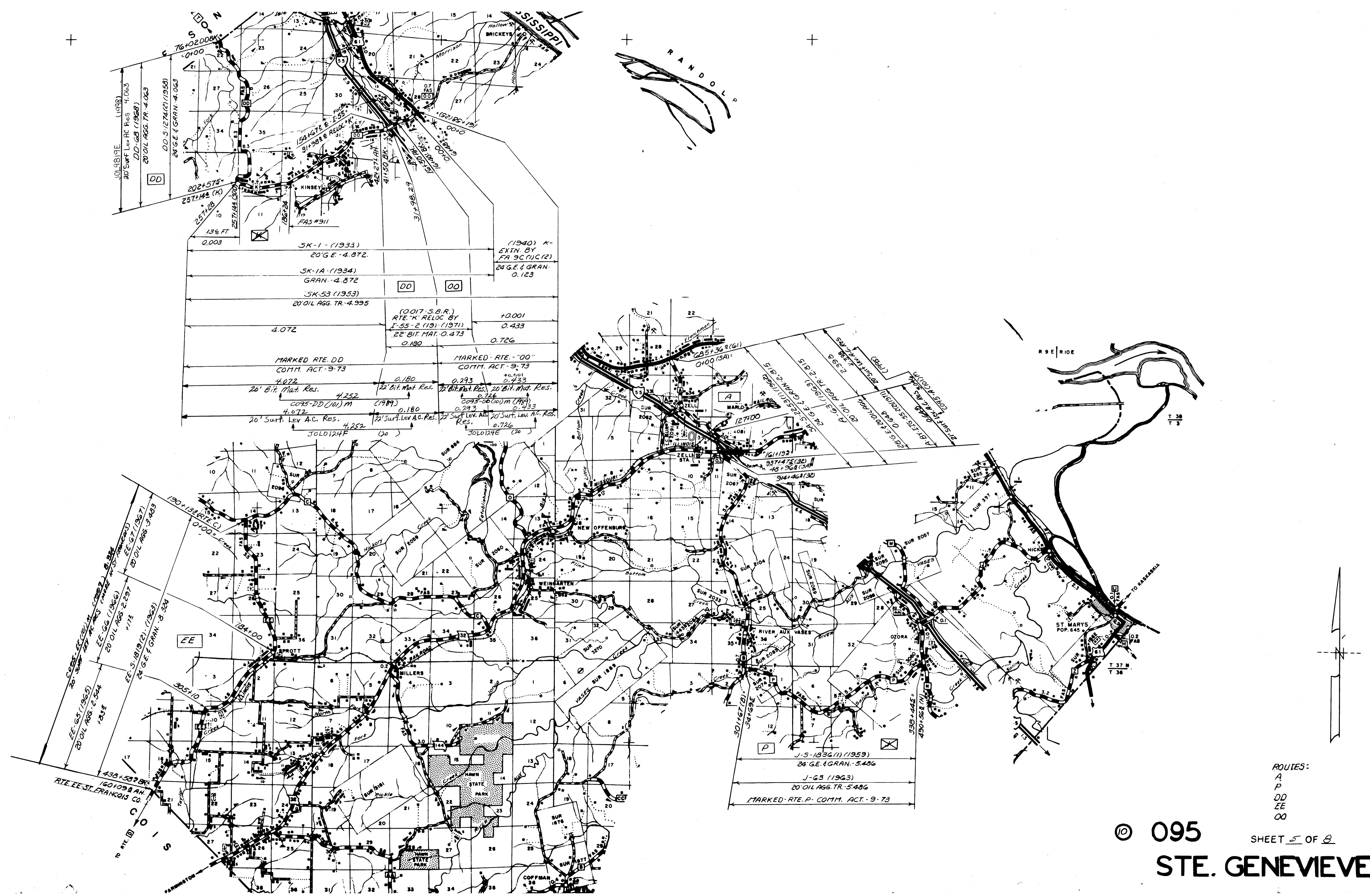
(1981)
T-AS-254 (G)
20' GE. E. GRAN. - 0364
20' GE. F. GRAN. - 0364

6024-T (1984)
20' Surf. Law. Ac. Res. 1856
LIB. 0.001
(part in St. Francois & Perry Co.)

577+03
T-57 (1957)
OIL AGG. TR. - 0084
ST-S-595 (D)
20' GE. E. GRAN. - 0084

6024-T (1984)
20' Surf. Law. Ac. Res. 1856
LIB. 0.001
(part in St. Francois & Perry Co.)

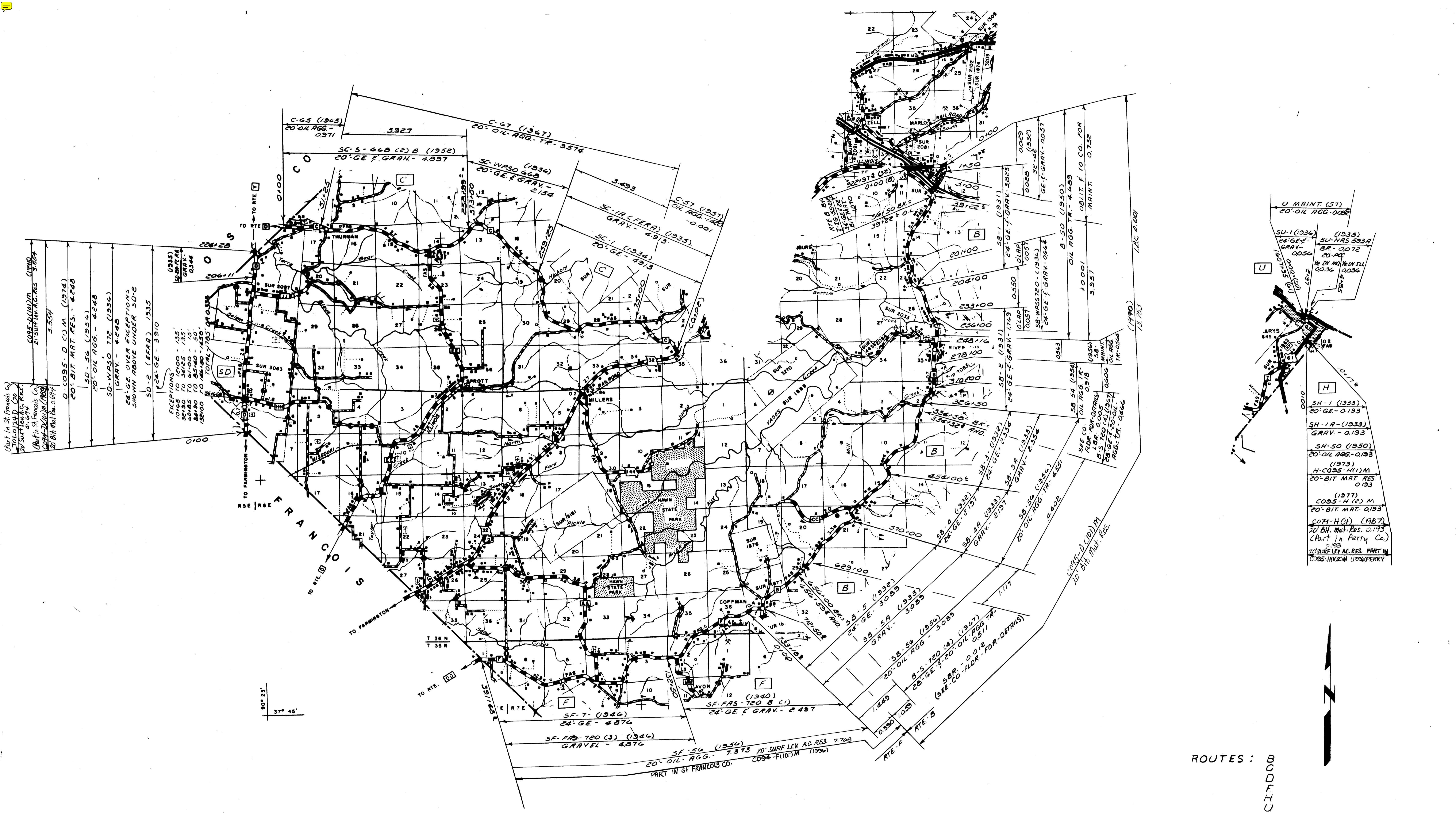
ROUTES =
144
T
Y
MM
WW
TT (OLD)



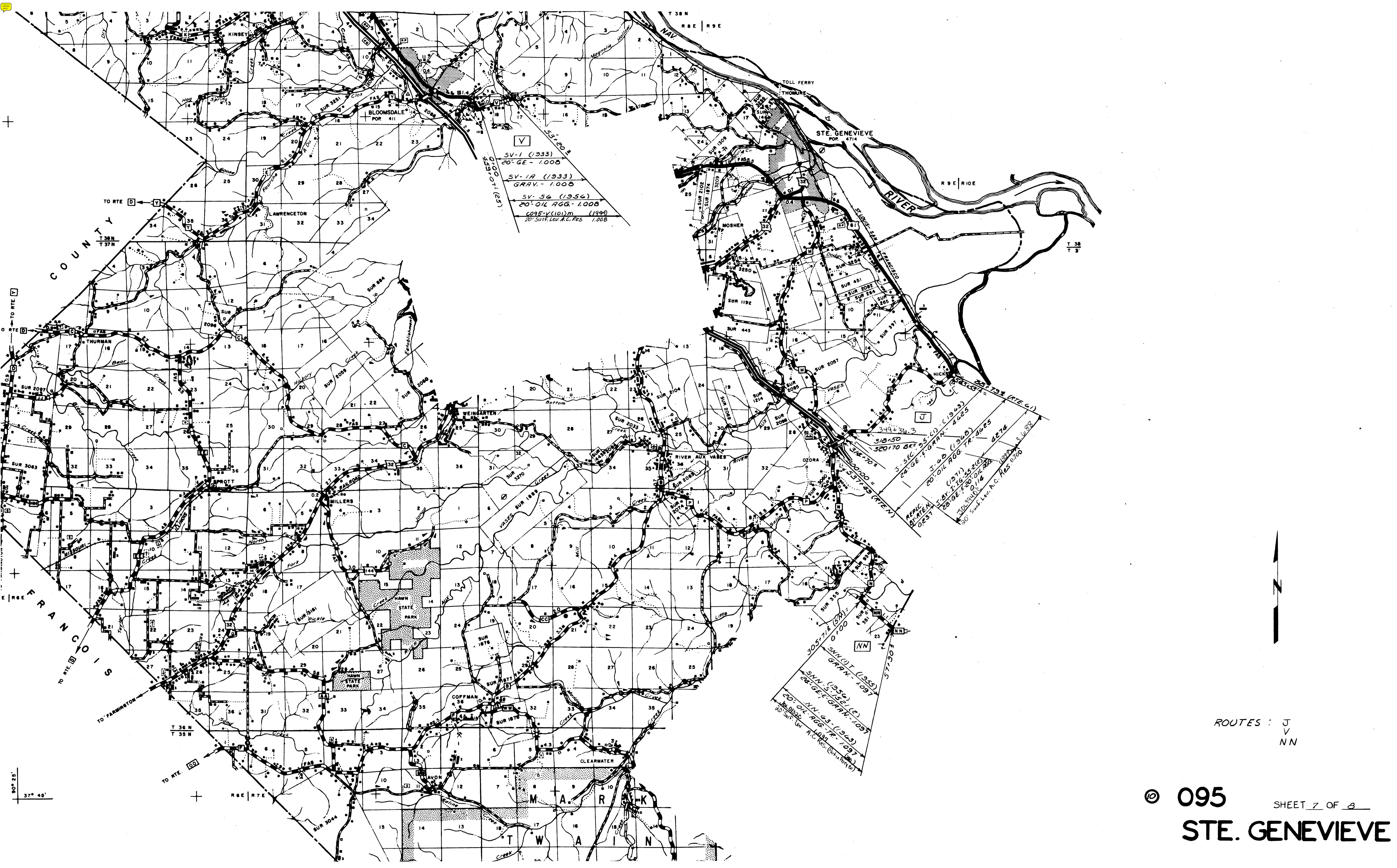
SK-1-(1933) 20' GE - 4.872	(1940) K- EXTN. BY FA 9C (11C) (2) 24' GE & GRAN. 0.123
SK-1A-(1934) GRAN. - 4.872	
SK-53 (1953) 20' OIL AGG. TR. - 4.995	
4.072	(0017 - S.B.R.) RTE. K RELOC BY I-55-2 (19) (1971) 22' BIT. MAT. - 0.473 0.180
MARKED RTE. DD COMM. ACT. - 9-73	MARKED RTE. "00" COMM. ACT. - 9-73
4.072 20' Bit. Mat. Res.	0.180 22' Bit. Mat. Res.
4.252 COAS-DD (01) m (1989)	0.180 COAS-06 (10) m (1989)
4.072 20' Surf. Lev A.C. Res.	0.293 20' Surf. Lev. A.C. Res.
4.252 20' Surf. Lev A.C. Res.	0.293 20' Surf. Lev. A.C. Res.
JOL0124E (20)	JOL0124E (20)

J-S-1836 (1) (1959) 24' GE. & GRAN. - 5.486
J-63 (1963) 20' OIL AGG. TR. - 5.486
MARKED RTE. P. COMM. ACT. - 9-73

ROUTES:
A
P
DD
EE
OO



ROUTES : B
D
F
H
C



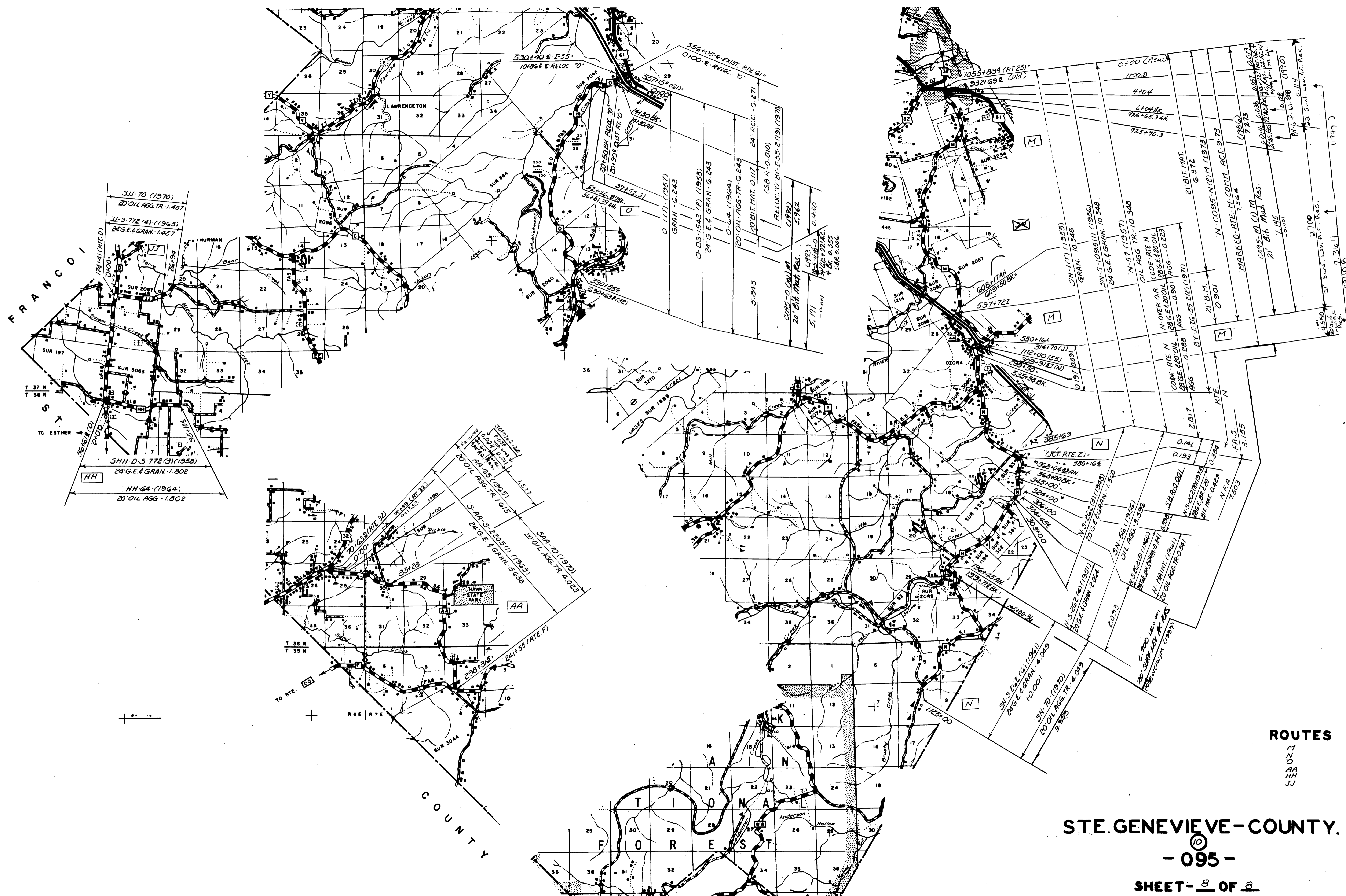
V
 SV-1 (1933)
 20' GE - 1,000
 SV-1A (1933)
 GRAV. - 1,000
 SV-56 (1956)
 20' OIL AGG. - 1,000
 COSE-V(101)M (1994)
 20' Surf. Lev. A.C. Res. 1,000

J
 318.50
 320.70 BRZ
 3.56' 95' (1) C (1963)
 20' OIL AGG. TR. 4625
 (1971)
 28' GE 1500 OIL 200
 20' OIL AGG. TR. 4625
 20' Surf. Lev. A.C. Res. 0.700

NN
 305.77 (1971)
 0' 0.00
 SNN (1956)
 GRAV. - 1,097
 SNN (1956)
 20' OIL AGG. TR. 1097
 (1971)
 20' OIL AGG. TR. 1097
 20' Surf. Lev. A.C. Res. (20' 100')



ROUTES : J
 V
 NN



STE. GENEVIEVE-COUNTY.

- ROUTES**
- M
 - N
 - O
 - AA
 - HH
 - JJ