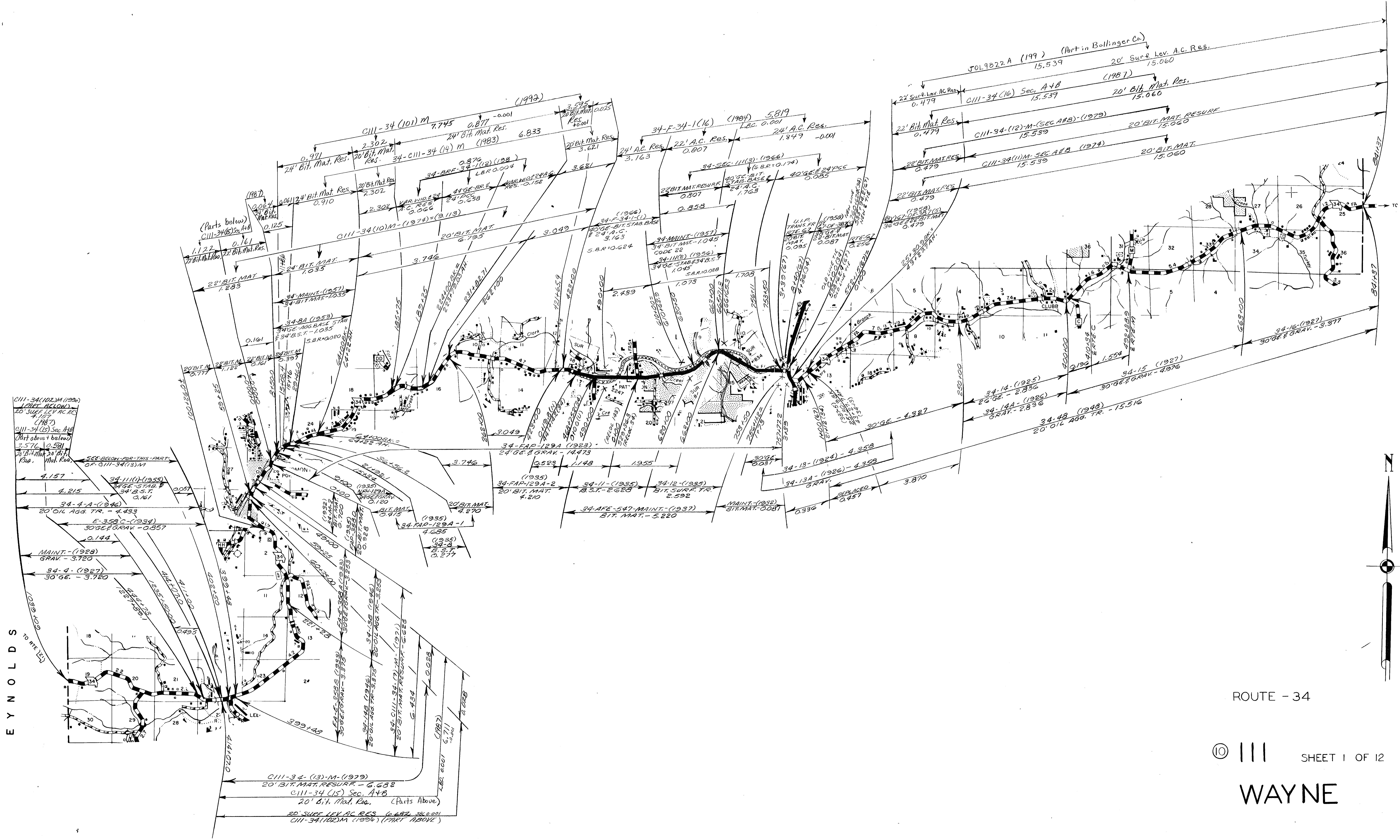


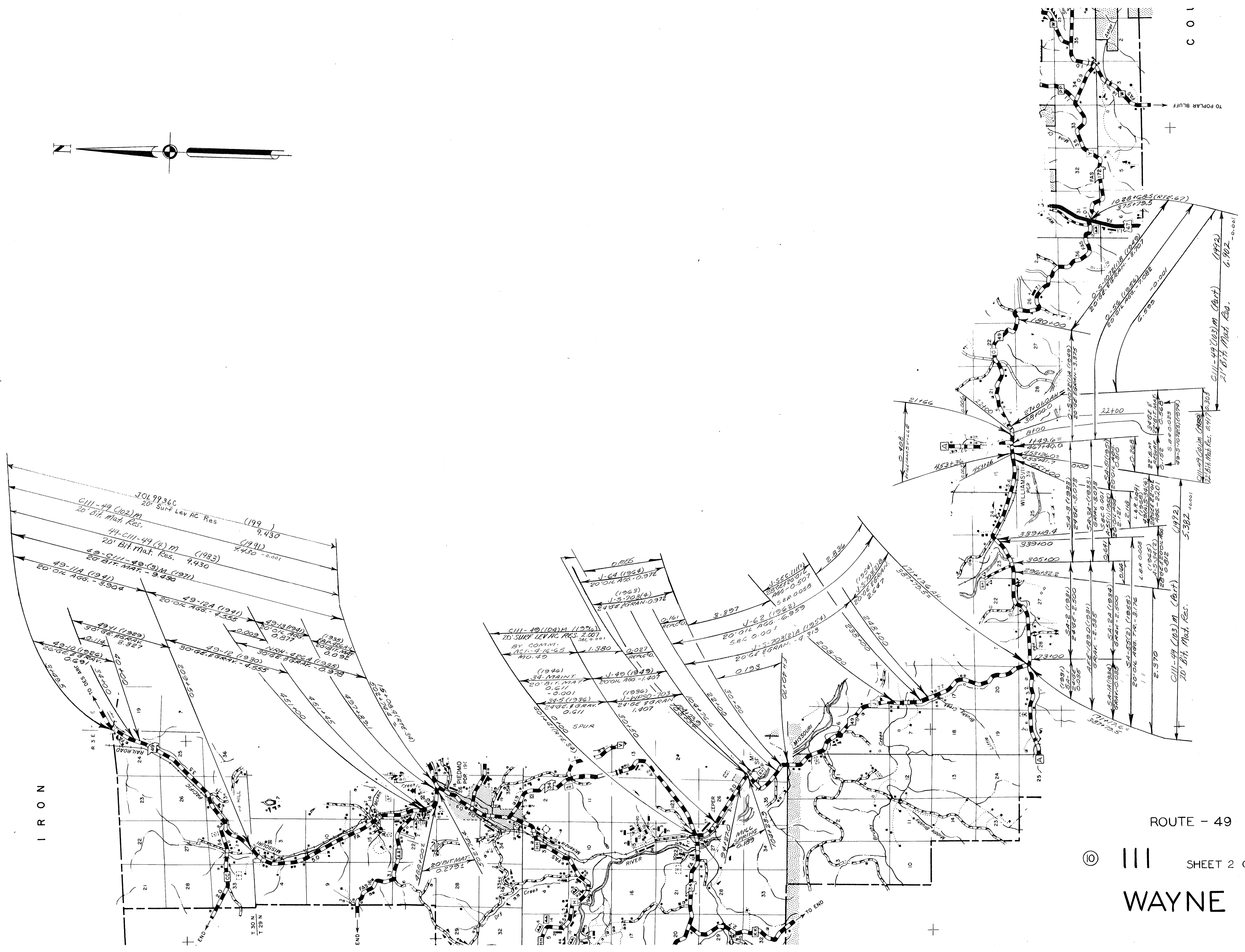
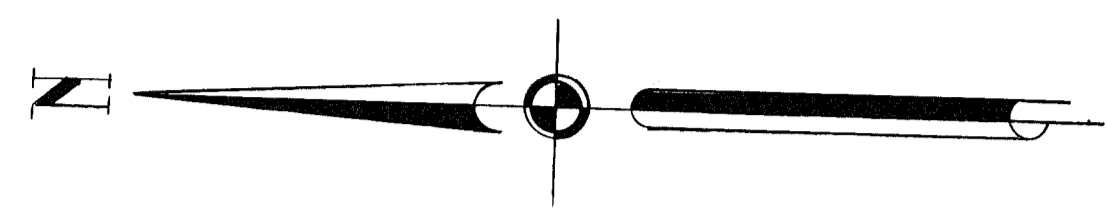
EYNOLDS



ROUTE - 34

⑩ ||| SHEET 1 OF 12

WAYNE



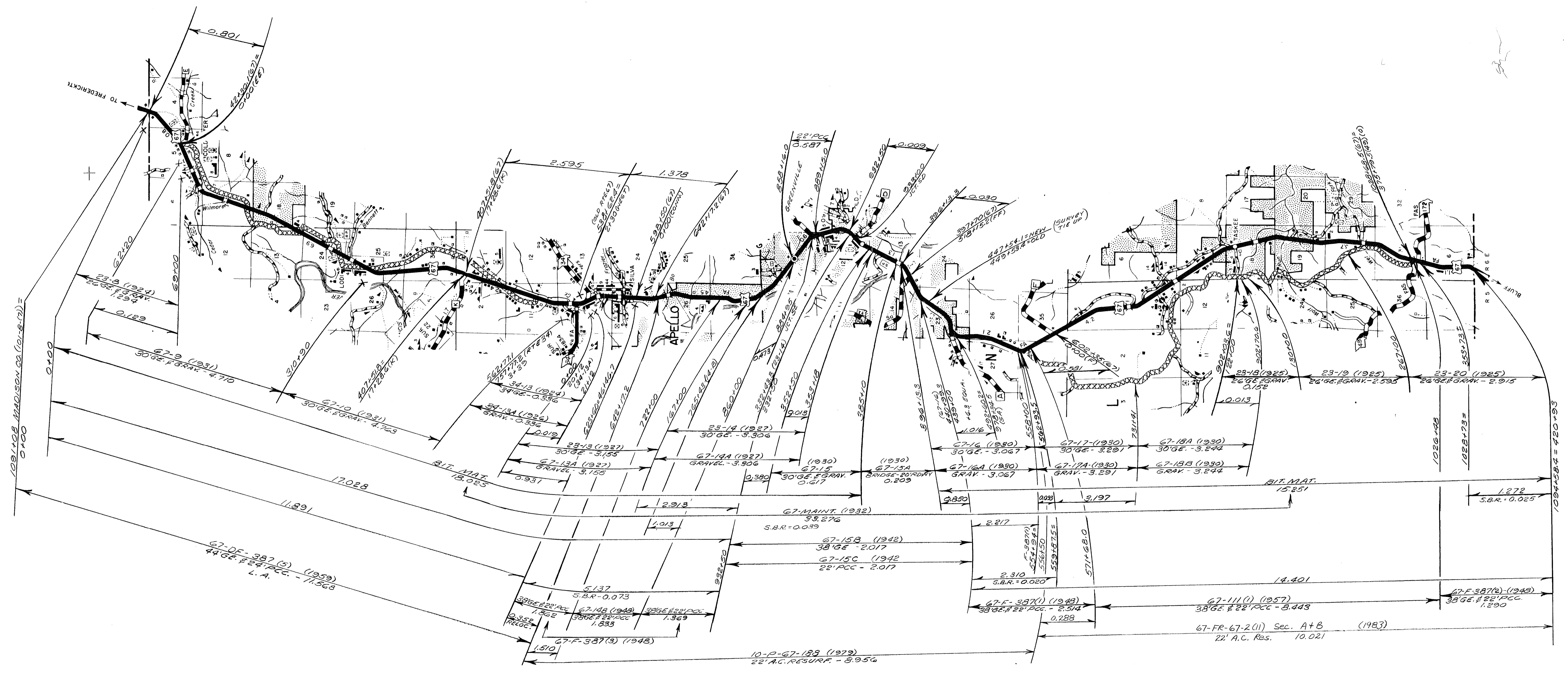
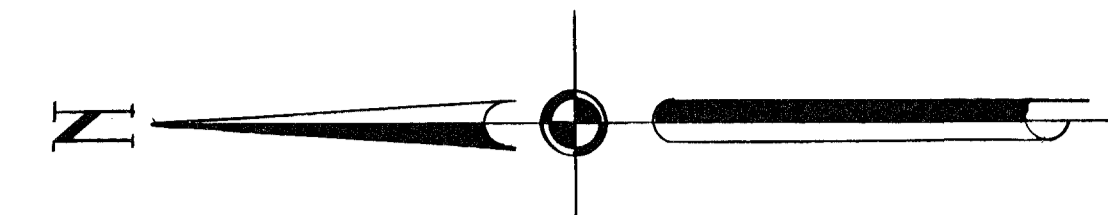
IRON

ROUTE - 49

⑩ SHEET 2 OF 12

WAYNE

COLE



ROUTE 67

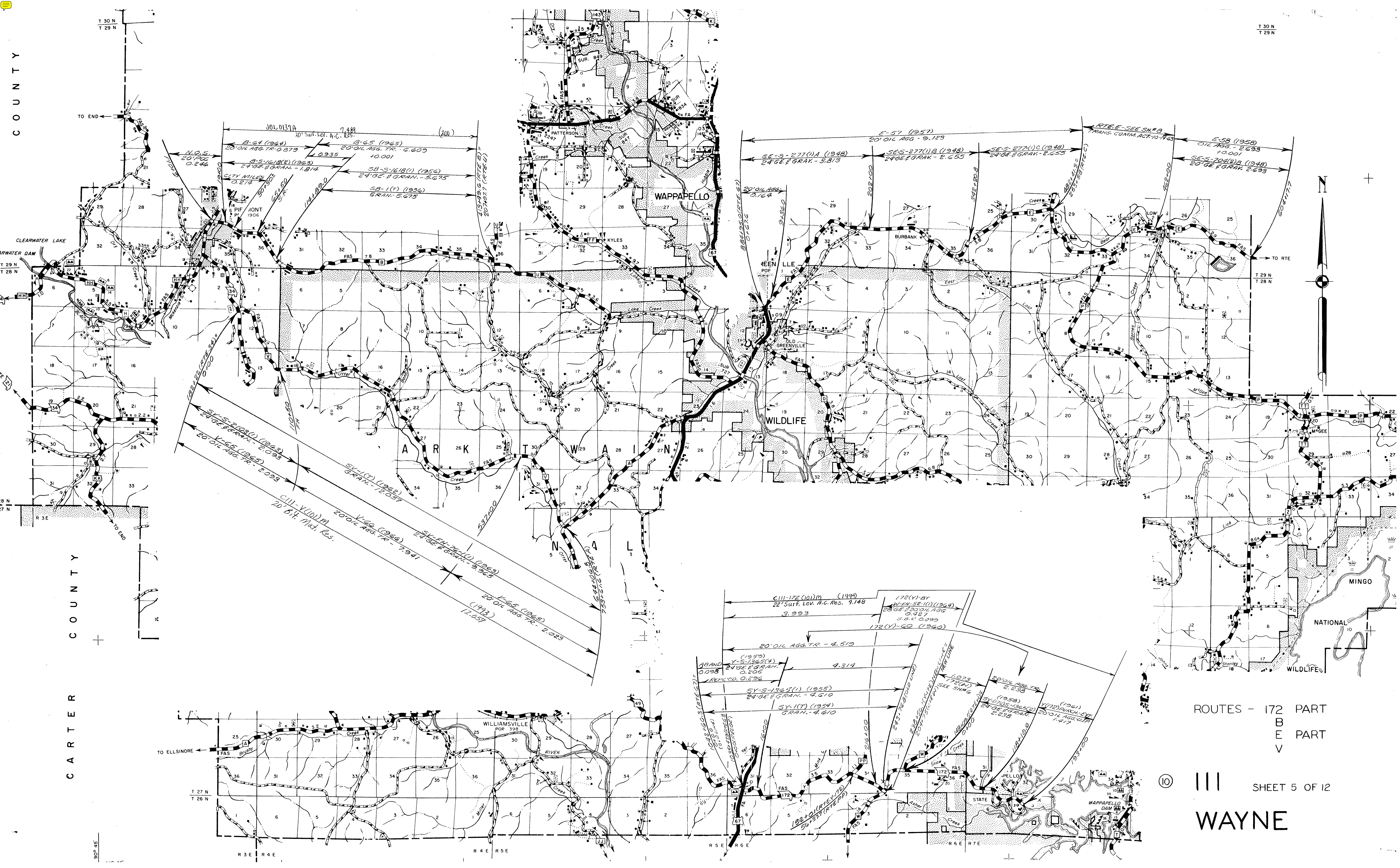
⑩ ||| SHEET 3 OF 12

WAYNE



C O U N T Y

C O U N T Y



ROUTES - 172 PART  
B  
E PART  
V

⑩ SHEET 5 OF 12

WAYNE

C O U N T Y

B O L L I N G E R

T 30 N  
T 29 N

T 30 N  
T 29 N

TO END



TO RTE 67

CLEARWATER  
WATER DAM

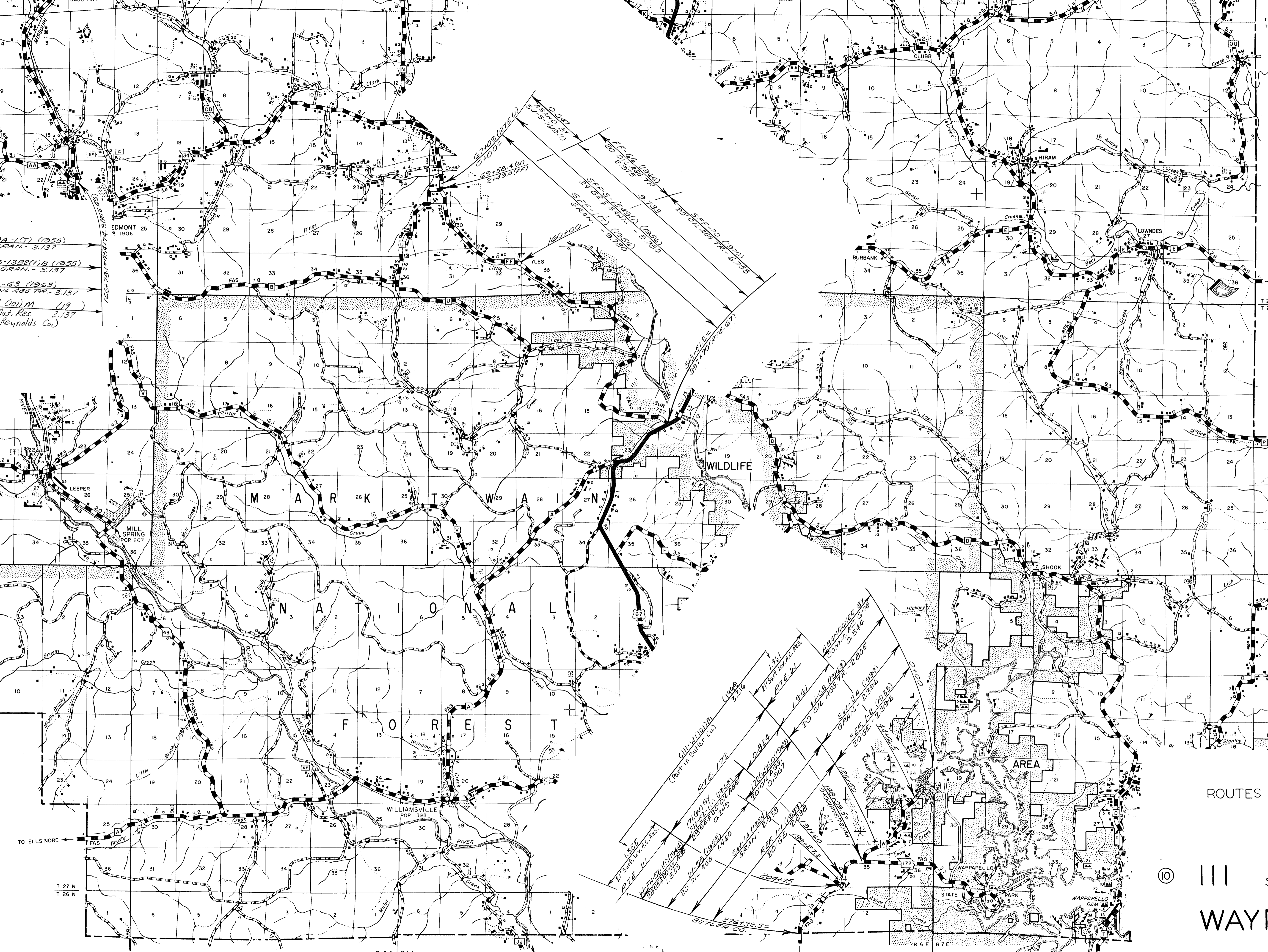
T 29 N  
T 28 N

T 29 N  
T 28 N

T 29 N  
T 28 N

C A R T E R  
C O U N T Y

M I N G O  
C O U N T Y



SAA-172 (1955)  
 GRAN. - 3,137  
 SAA-S-1352(I)B (1955)  
 GAUGE & GRAN. - 3,137  
 AA-63 (1963)  
 20' OIL AGG. RR. - 3,137  
 CII-AA (C) (M) (19)  
 21' Bit. Mat. Res. 3,137  
 (Part in Reynolds Co.)

1,355  
 21' SURF. MAT. RES.  
 RTE. W  
 W.P. 1955 (1955)  
 20' OIL AGG. RR.  
 1,955  
 M.S. 1955 (1955)  
 20' OIL AGG. RR.  
 1,460  
 S.W. 1955 (1955)  
 GRAN. - 2,010  
 20' OIL AGG. RR.  
 2,010  
 276,132.5  
 BUTLER CO.

ROUTES - 172 (PART)  
 W  
 AA  
 FF (PART)

⑩ ||| SHEET 6 OF 12

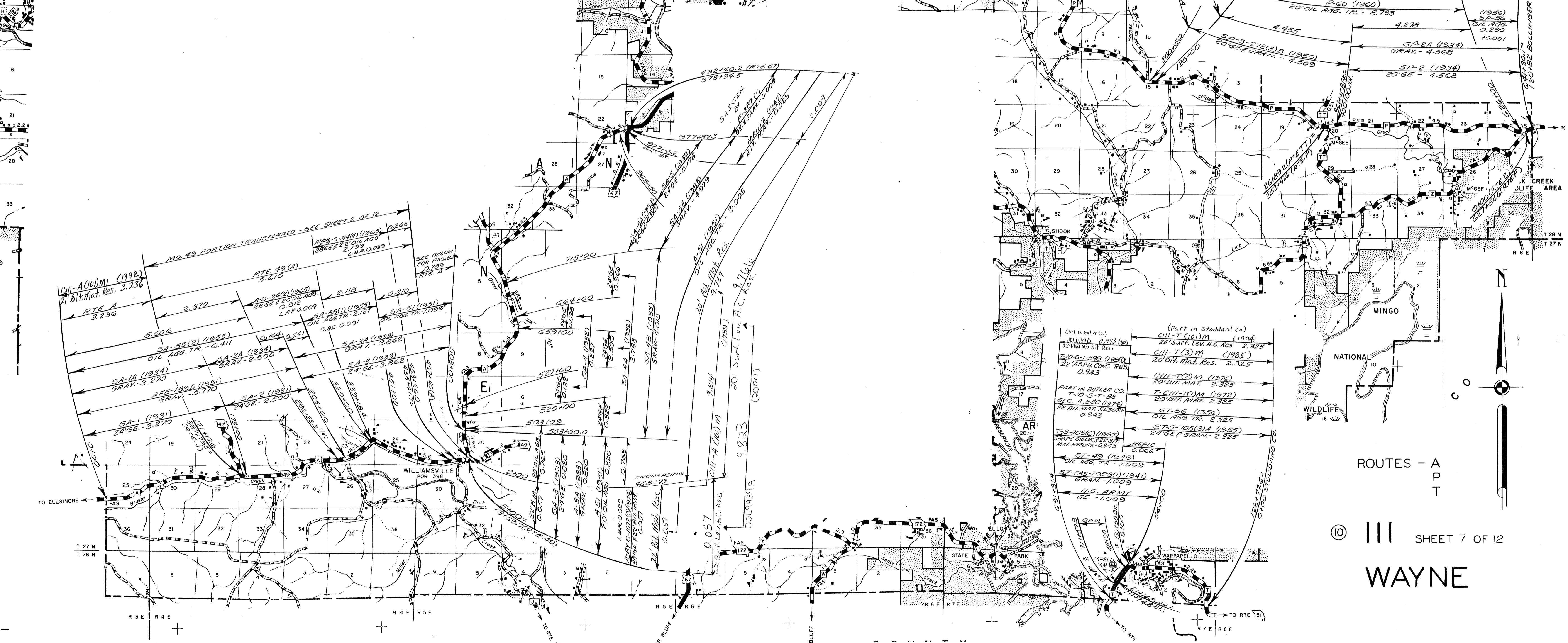
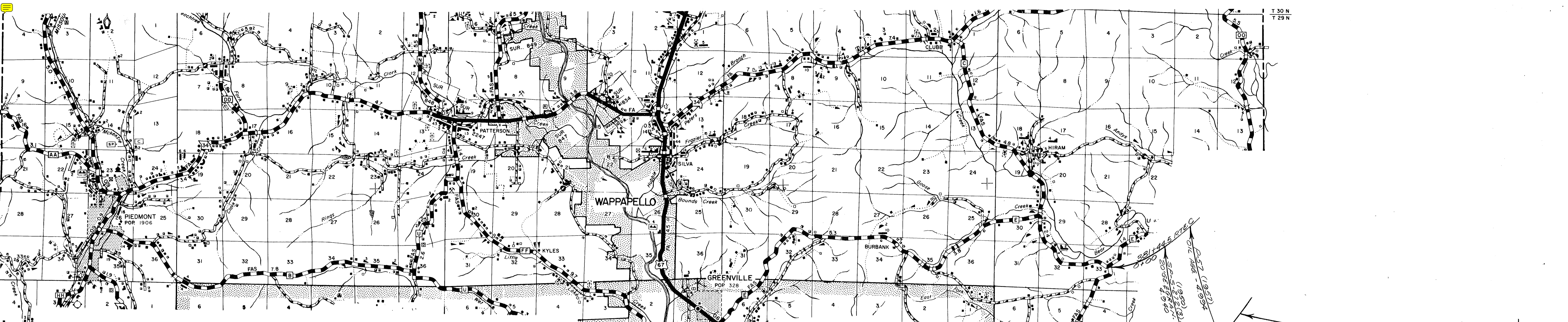
WAYNE

90° 45'

R 3 E R 4 E

R 4 E R 5 E

R 6 E R 7 E



Part in Butler Co.

Part in Stoddard Co.

<ul style="list-style-type: none"> <li>100152D 0.943 (190)</li> <li>22' Bit. Mat. Res.</li> <li>T-10-S-T-28 (1985)</li> <li>22' ASPH CONC. RES. 0.943</li> <li>Part in Butler Co.</li> <li>T-10-S-T-28 (1985)</li> <li>SEC. A-B-C (1974)</li> <li>22' BIT. MAT. RESURF. 0.943</li> <li>T-5-705(C) (1968)</li> <li>SHAPE SHIFTS 2333</li> <li>MAT. RESURF. 0.943</li> <li>ST-49 (1949)</li> <li>OIL AGG. TR. - 1.009</li> <li>ST-FAS-705-B(1) (1941)</li> <li>GRAN. - 1.009</li> <li>U.S. ARMY</li> <li>BE - 1.009</li> </ul>	<ul style="list-style-type: none"> <li>20' SURF. LEV. A.C. RES. 2.325</li> <li>C111-T(3) M (1985)</li> <li>20' BIT. MAT. RES. 2.325</li> <li>C111-T(2) M (1976)</li> <li>20' BIT. MAT. 2.325</li> <li>T-C111-T(1) M (1972)</li> <li>20' BIT. MAT. 2.325</li> <li>ST-56 (1956)</li> <li>OIL AGG. TR. 2.325</li> <li>ST-5-705(3) A (1955)</li> <li>24' GE &amp; GRAN. - 2.325</li> </ul>
--	--

REPLIC. 0.066

ST-49 (1949)

OIL AGG. TR. - 1.009

ST-FAS-705-B(1) (1941)

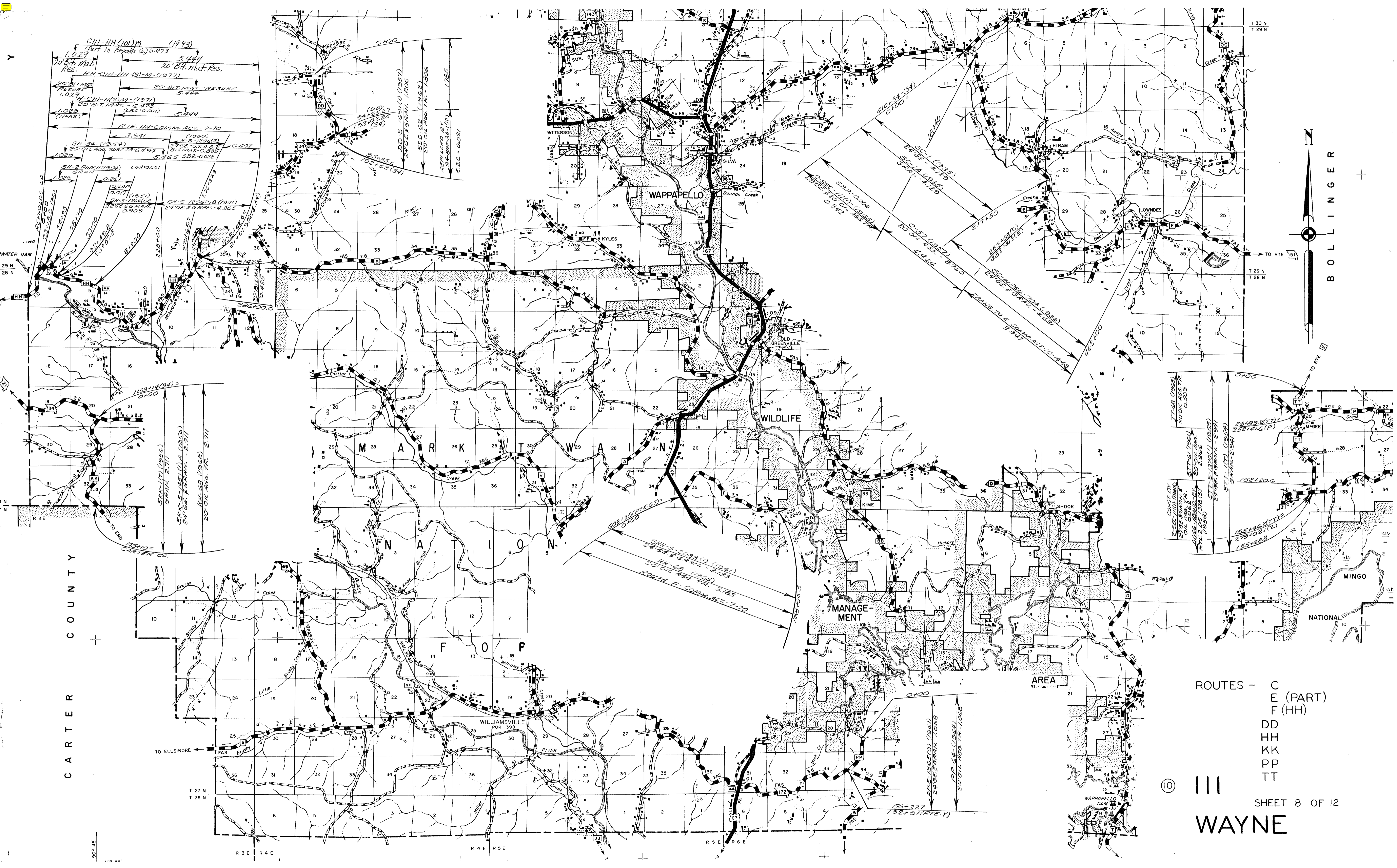
GRAN. - 1.009

U.S. ARMY

BE - 1.009

ROUTES - A  
P  
T

⑩ III SHEET 7 OF 12  
WAYNE



BOLLINGER

CARTER COUNTY

ROUTES - C  
 E (PART)  
 F (HH)  
 DD  
 HH  
 KK  
 PP  
 TT

⑩

III  
 SHEET 8 OF 12  
 WAYNE

CIII-HH(10)M (1973)  
 (Part in Reynolds Co.) 6.473  
 1.023  
 10' BIT. MAT. RES.  
 44-CIII-HH(3)-M-(1971)  
 20' BIT. MAT. RESURF.  
 5.444  
 1.023 (NFAS)  
 20' BIT. MAT. RESURF.  
 5.444  
 RTE. HH-COMM. ACT. 7-70  
 3.291  
 SH-54 (1954)  
 20' OIL AGG. SURF. TR. 2.294  
 1.023  
 SH-2 PURCH (1954)  
 GRAN. 0.261  
 1.023  
 20' OIL AGG. TR. 1.506  
 20' OIL AGG. TR. 1.506  
 REFACED BY 34-BRF-34-112  
 S.B.C. = 0.021

1153+14(34) = 0100  
 1.023  
 SHK-1(1) (1956)  
 GRAN. 2.711  
 SHK-S-151(LA) (1955)  
 24' GE. E GRAN. 2.711  
 20' OIL AGG. TR. 2.711  
 1.540 = CARTER CO.

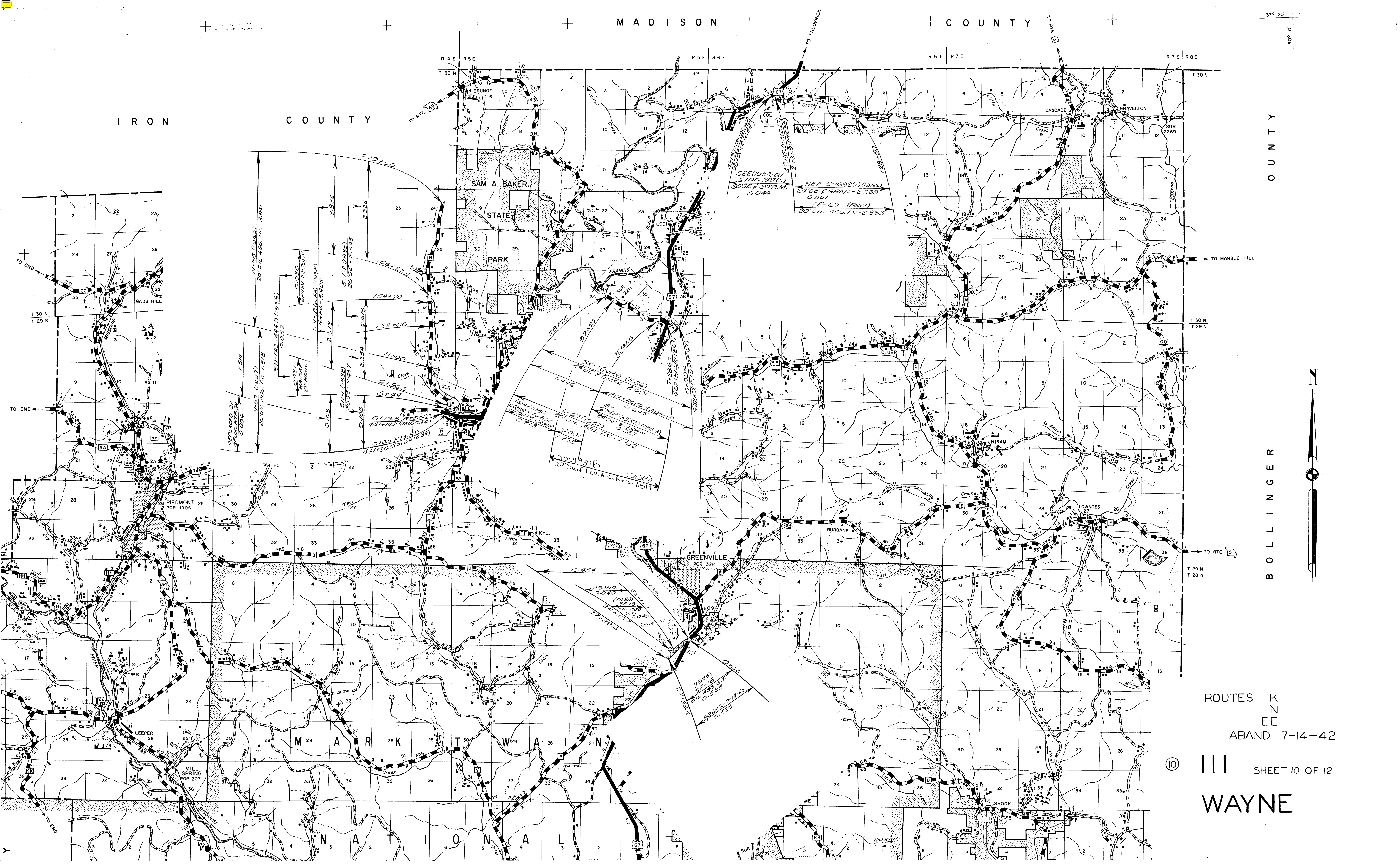
SHH-S-2098(1) (1951)  
 24' GE. E GRAN. 3.185  
 HH-68 (1968)  
 20' OIL AGG. TR. 3.185  
 ROUTE F-COMM. ACT. 7-70

561+377  
 192+01(1971)  
 PPS-1365(3) (1961)  
 24' GE. E GRAN. 7.068  
 20' OIL AGG. TR. 7.068

155+46(1) (1955)  
 24' GE. E GRAN. 2.994  
 STT-1(1) (1954)  
 GRAN. 2.994  
 155+46(2)  
 279+02(1)  
 155+46.8  
 26+99.2(T)  
 352+14(P)  
 1.023  
 20' OIL AGG. TR. 0.003  
 CONST. BY 2-SEC-1110(1954)  
 24' GE. E GRAN. 2.711  
 20' OIL AGG. TR. 2.711  
 1.023  
 20' OIL AGG. TR. 2.711







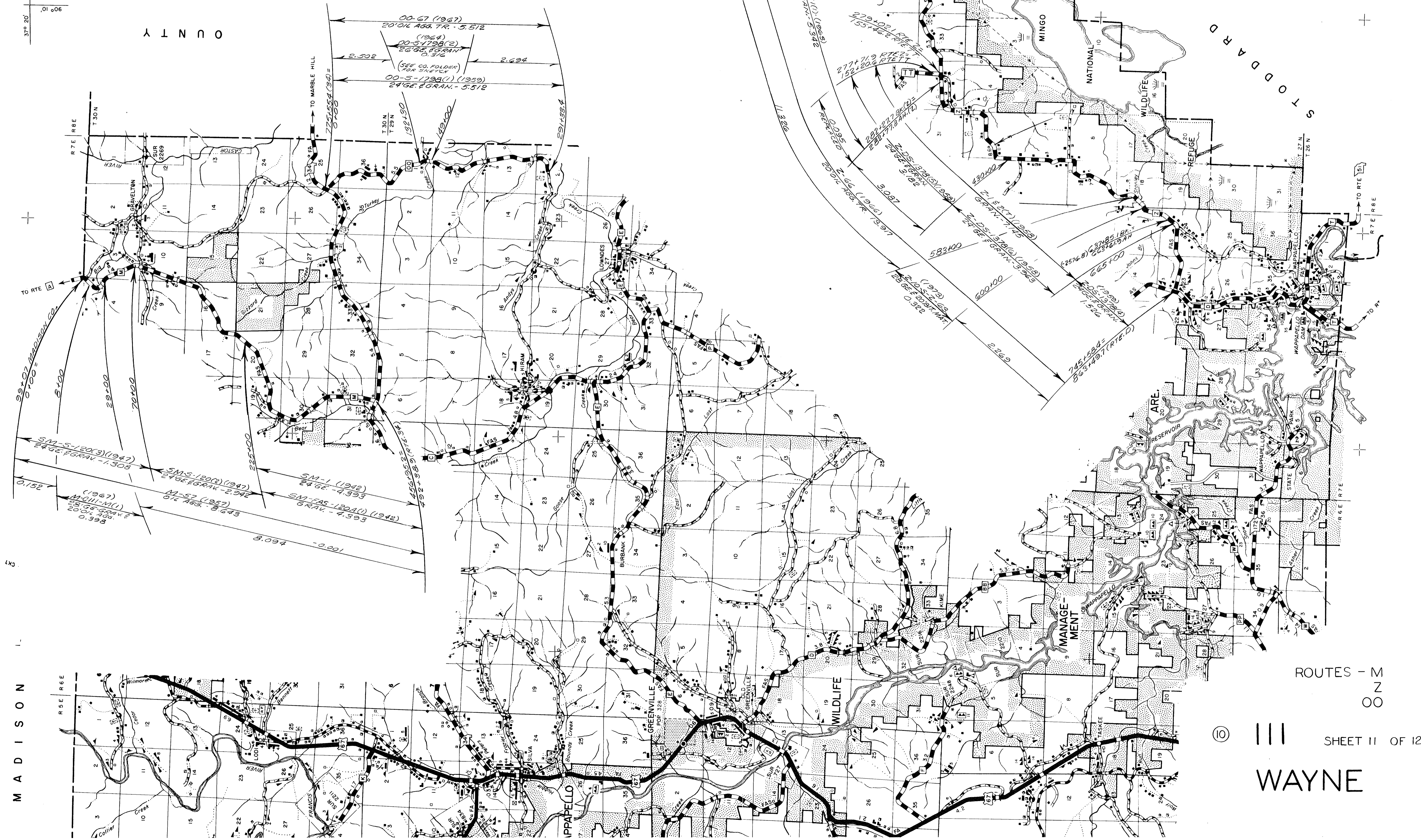
ROUTES K  
N  
EE  
ABAND. 7-14-42

⑩ SHEET 10 OF 12

WAYNE

37° 20' 01" 006

MINNOCOUNTY

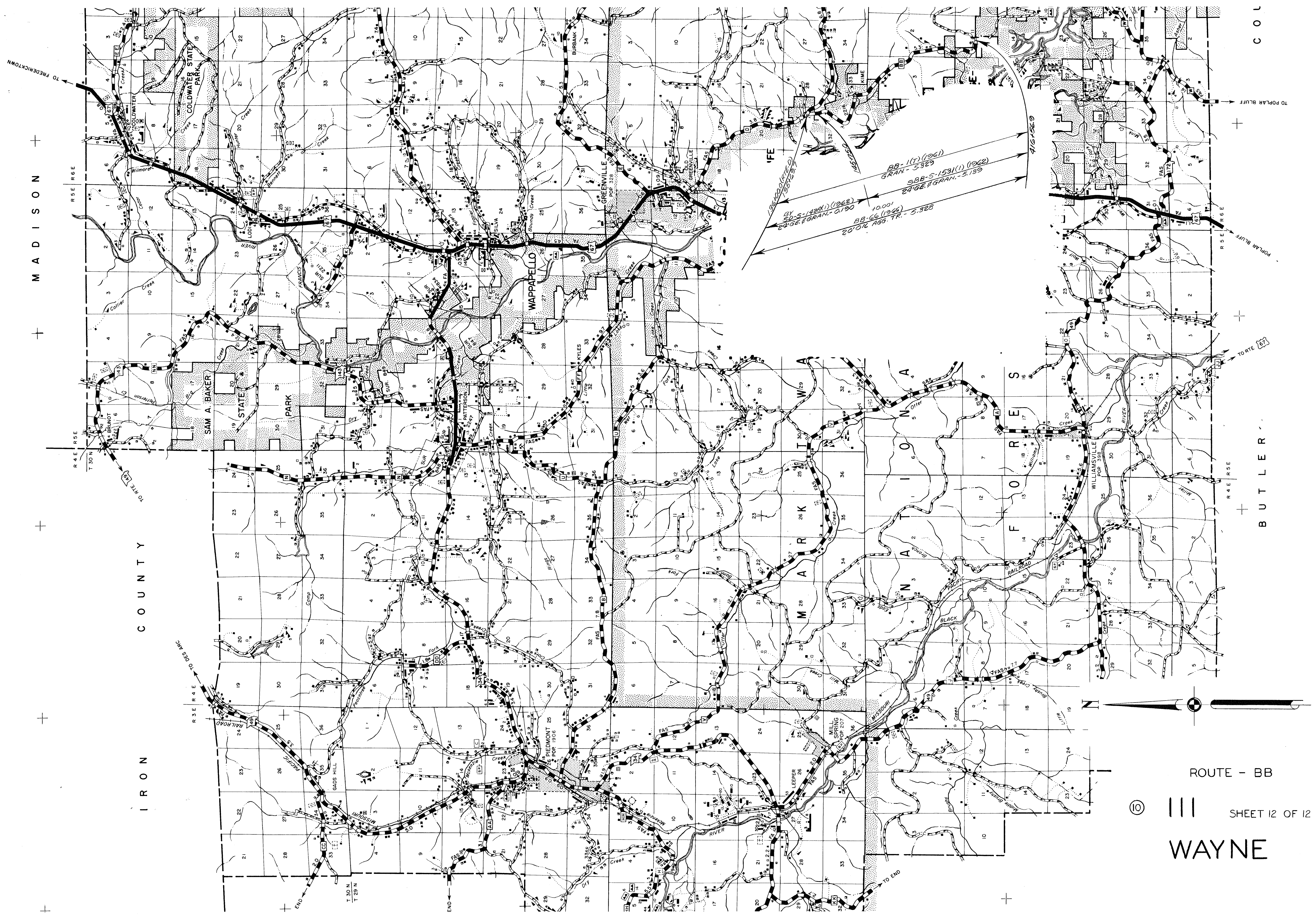


MADISON

ROUTES - M  
Z  
OO

⑩ SHEET II OF 12

WAYNE



BB-1(T) (1961)  
GRAN - 5.329  
SBB-S-1531(I) (1962)  
24 GE. E GRAN - 5.139  
BY 20-S-1438(I) (1962)  
24 GE. E GRAN - 0.190  
10.00'  
BB 66 (1966)  
20' O.C. AGG. TR. - 5.328

ROUTE - BB



SHEET 12 OF 12

WAYNE