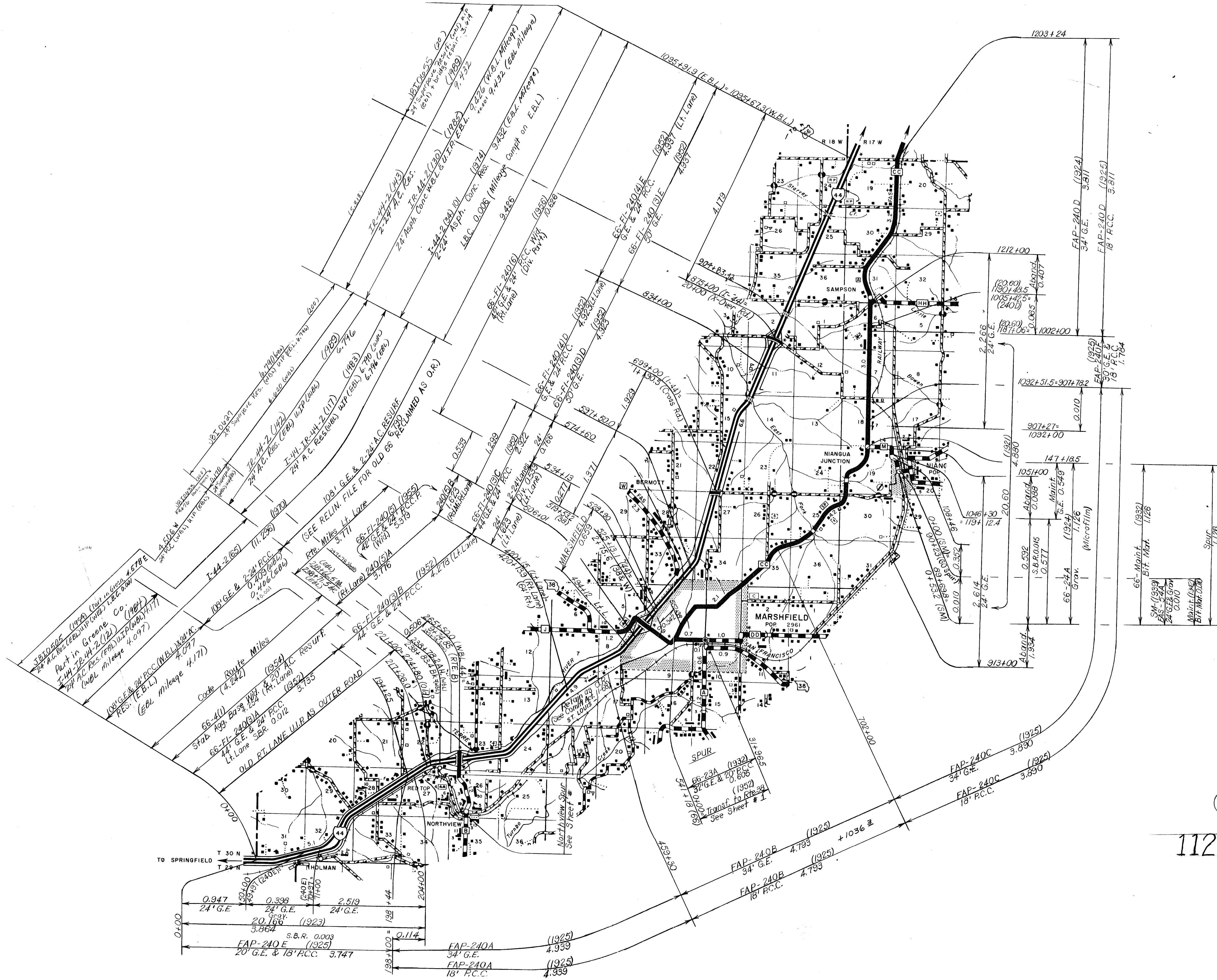
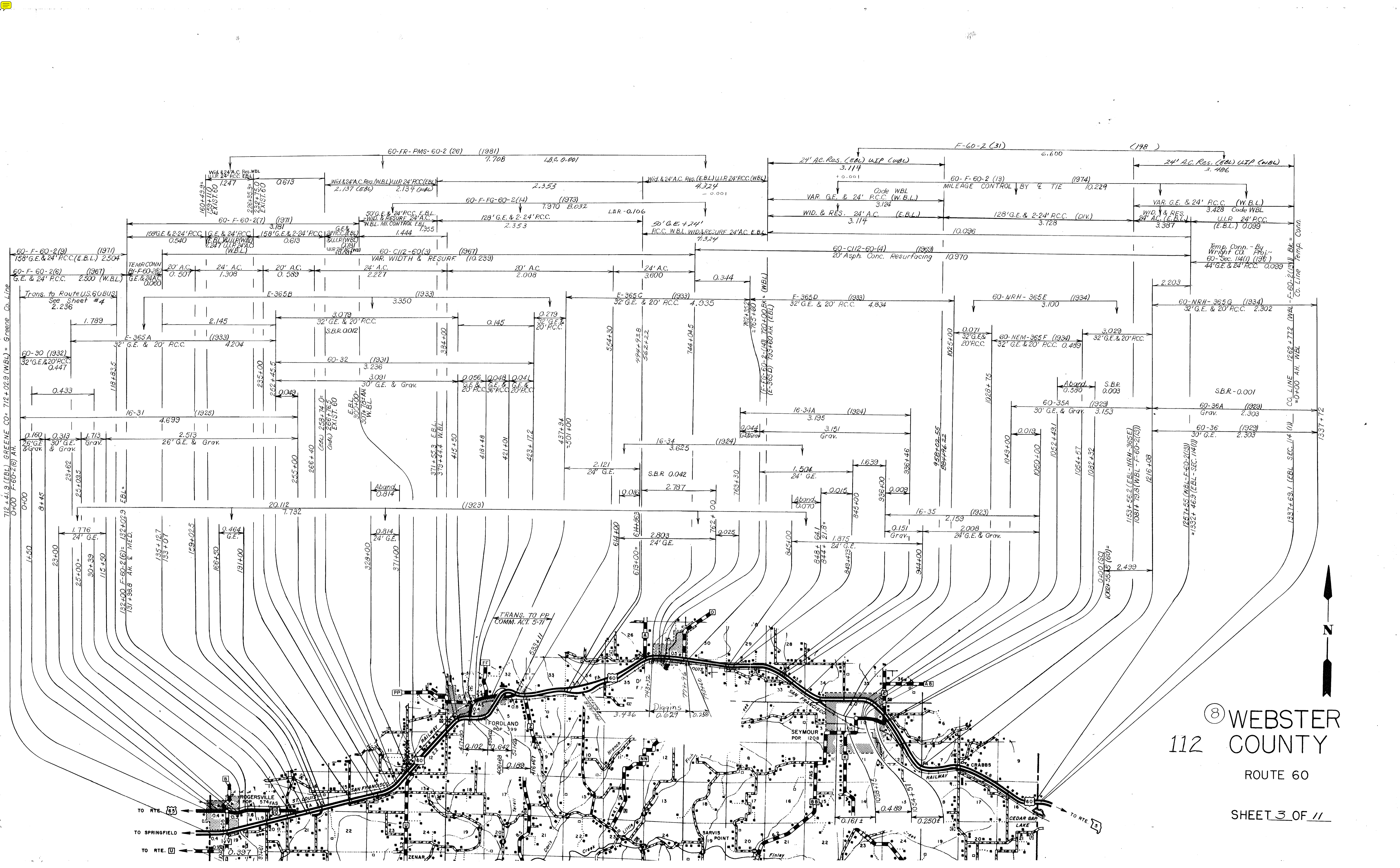


SHH-1(T) (1955)
 Gran. 3.602
 SHH-S-1550(I) - (1956)
 24' G.E. & Grav. 3.602
 SHH-61 (1961)
 20' Oil Aggr. Tr. 3.602

⑧ WEBSTER COUNTY
 112 ROUTES 38, AC, HH, & WW
 SHEET 1 OF 11

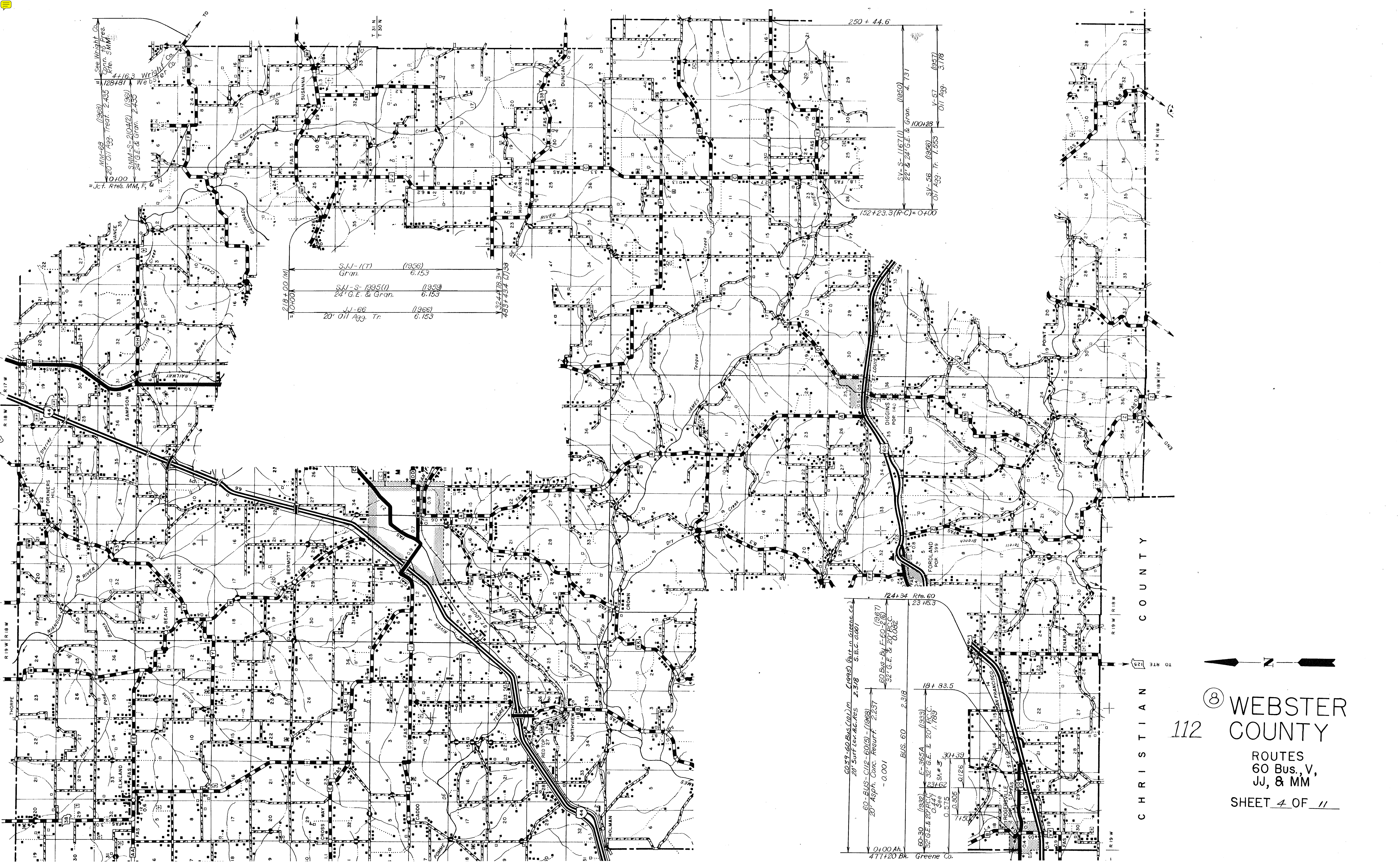


⑧ WEBSTER COUNTY
 ROUTE I-44
 SHEET 2 OF 11



⑧ WEBSTER
 COUNTY
 ROUTE 60
 SHEET 3 OF 11

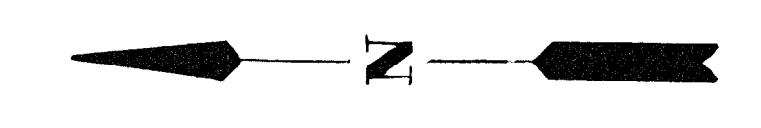




See Wright Co. 128481
 4-16.3 Wright Co.
 20' Oil Agg. Treat. 2.455
 SMM-S-2104(2) (1961)
 27' G.E. & 20' P.C.C. 2.450
 Jct. Rtes. MM, F, & 10+00

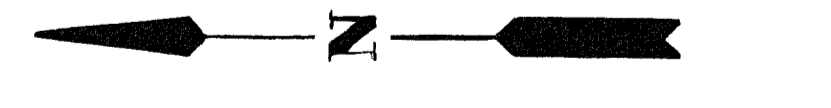
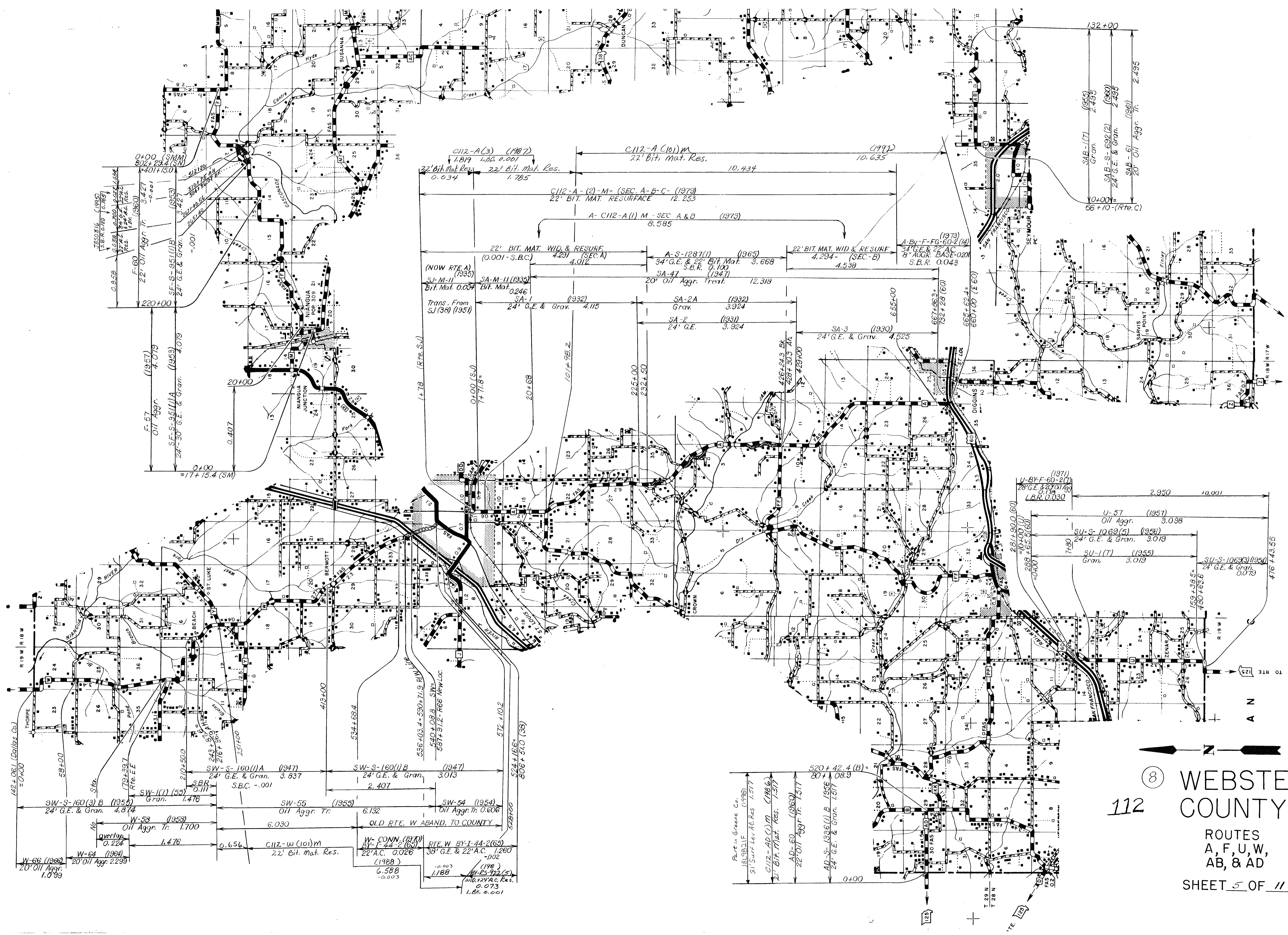
218+00 (M)
 10+00
 S.J.J.-1(T) (1956) 6.153
 S.V.-S-1995(U) 24' G.E. & 20' P.C.C. (1959) 6.153
 J.J.-66 20' Oil Agg. Tr. (1966) 6.153
 32+479.3= 488+434 (U) 38

0+00 Ah.
 47+20 Bk. Greene Co.
 60-39-60 Bus. (U) in Cigars (alt in Greene Co.)
 20' Surf Lev. Mc. Res. 2.318 S.B.C. 0.001
 60-BUS-C12-60(5) - (1968)
 20' Asph. Conc. Resurf. 2.237
 - 0.001
 BUS. 60 2.318
 124+54 Rte. 60 23 16.3
 60 Bus - P.C.C. (1967)
 32' G.E. & 20' P.C.C.
 60-30 (1932) E-365A (1933)
 32' G.E. & 20' P.C.C. 1.789
 0.447
 See 60-30
 0.515
 0.126
 71500

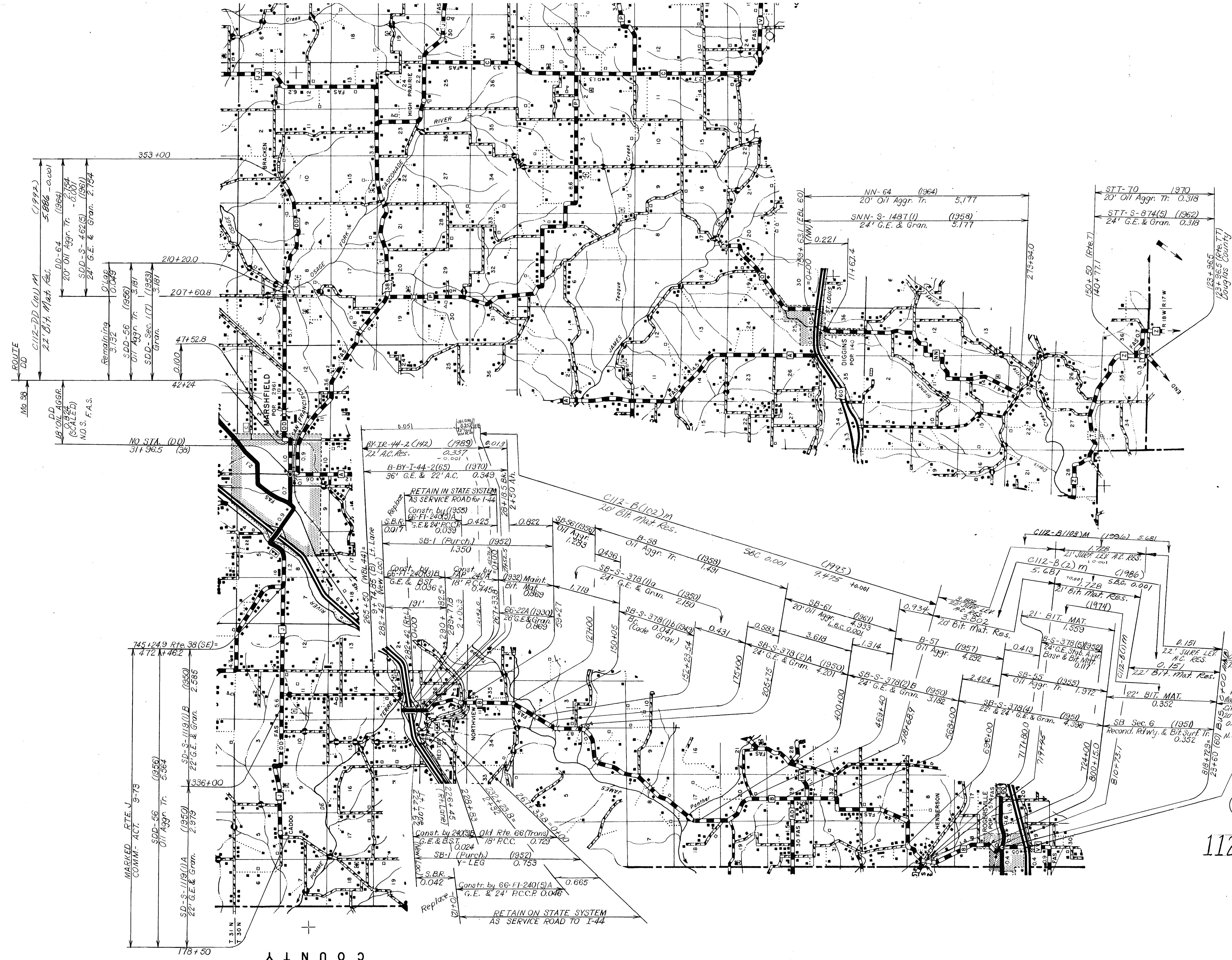


112 ⑧ WEBSTER COUNTY

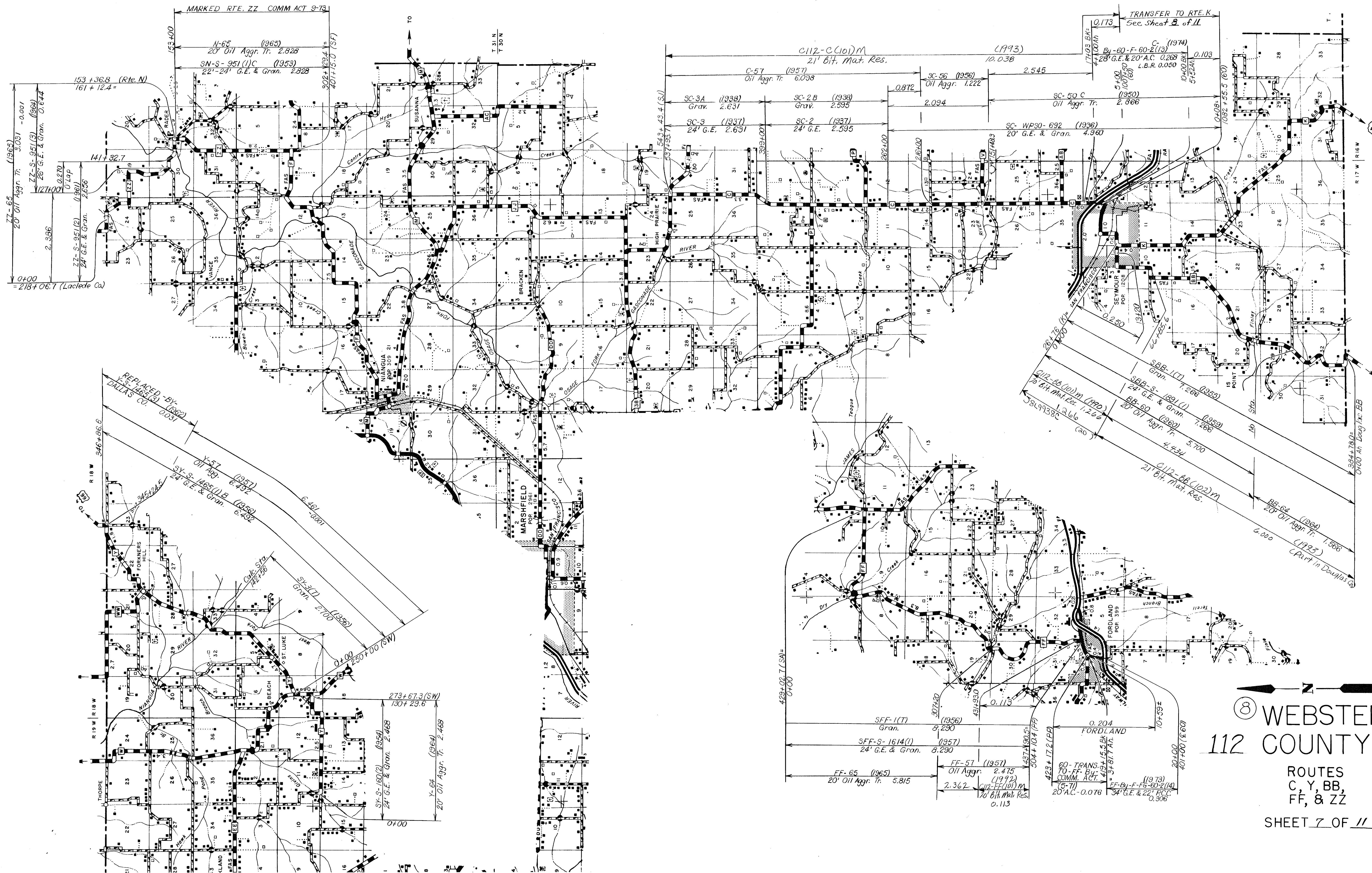
ROUTES
 60 Bus., V,
 JJ, & MM



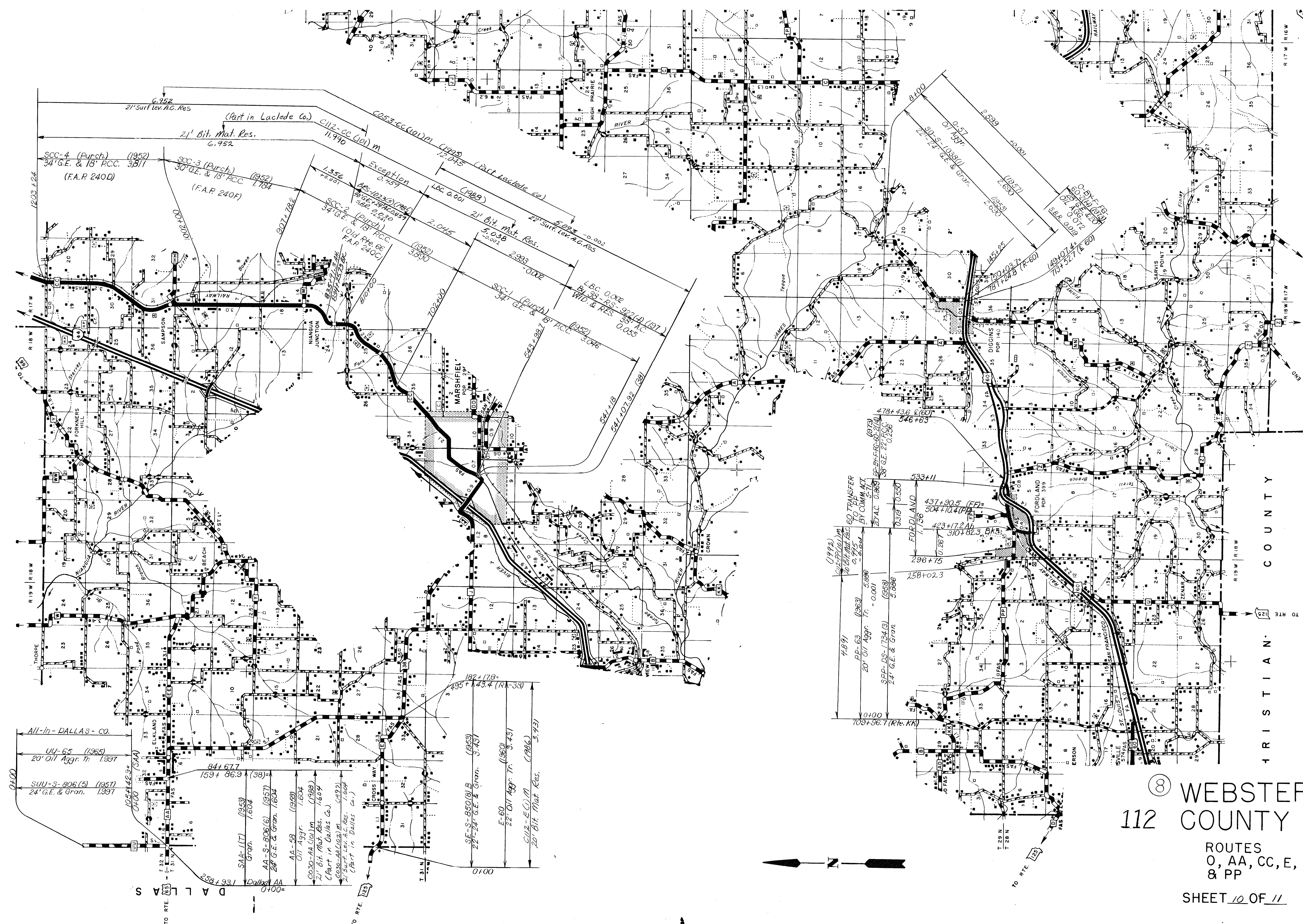
112 (8) WEBSTER COUNTY
 ROUTES A, F, U, W, AB, & AD
 SHEET 5 OF 11



8 WEBSTER
 COUNTY
 ROUTES
 B, J, DD,
 NN, & TT
 SHEET 6 OF 11



⑧ WEBSTER
 112 COUNTY
 ROUTES
 C, Y, BB,
 FF, & ZZ
 SHEET 7 OF 11



⑧ WEBSTER
112 COUNTY

ROUTES
O, AA, CC, E,
& PP

