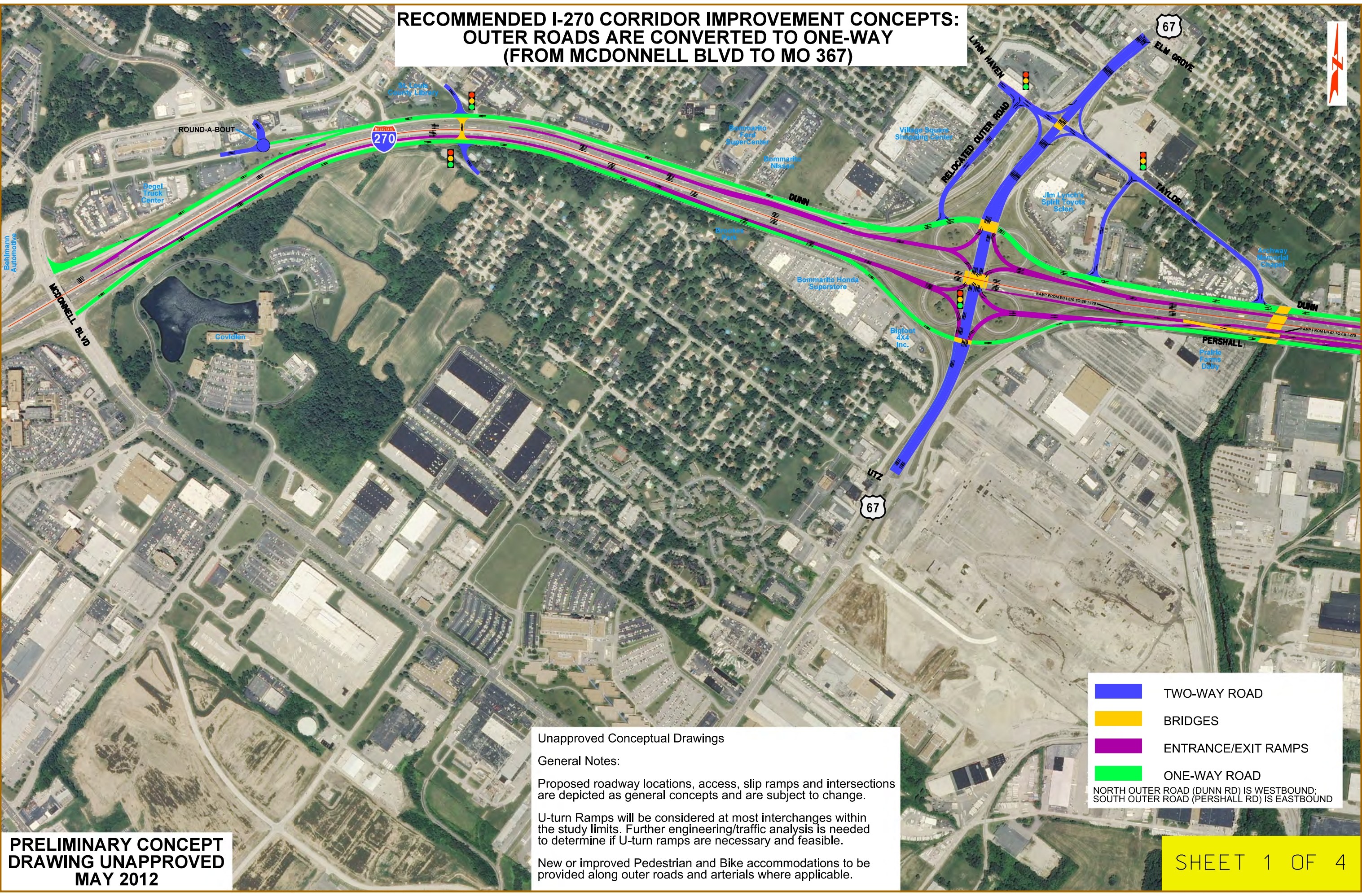


**RECOMMENDED I-270 CORRIDOR IMPROVEMENT CONCEPTS:
OUTER ROADS ARE CONVERTED TO ONE-WAY
(FROM MCDONNELL BLVD TO MO 367)**



Unapproved Conceptual Drawings

General Notes:

Proposed roadway locations, access, slip ramps and intersections are depicted as general concepts and are subject to change.

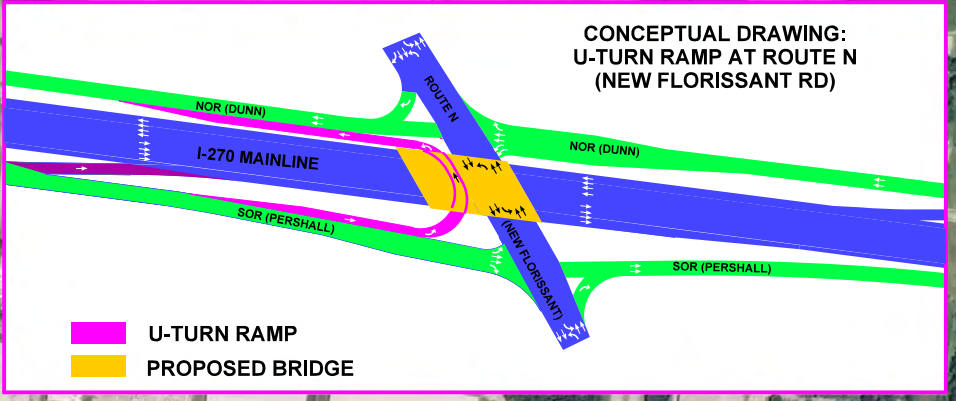
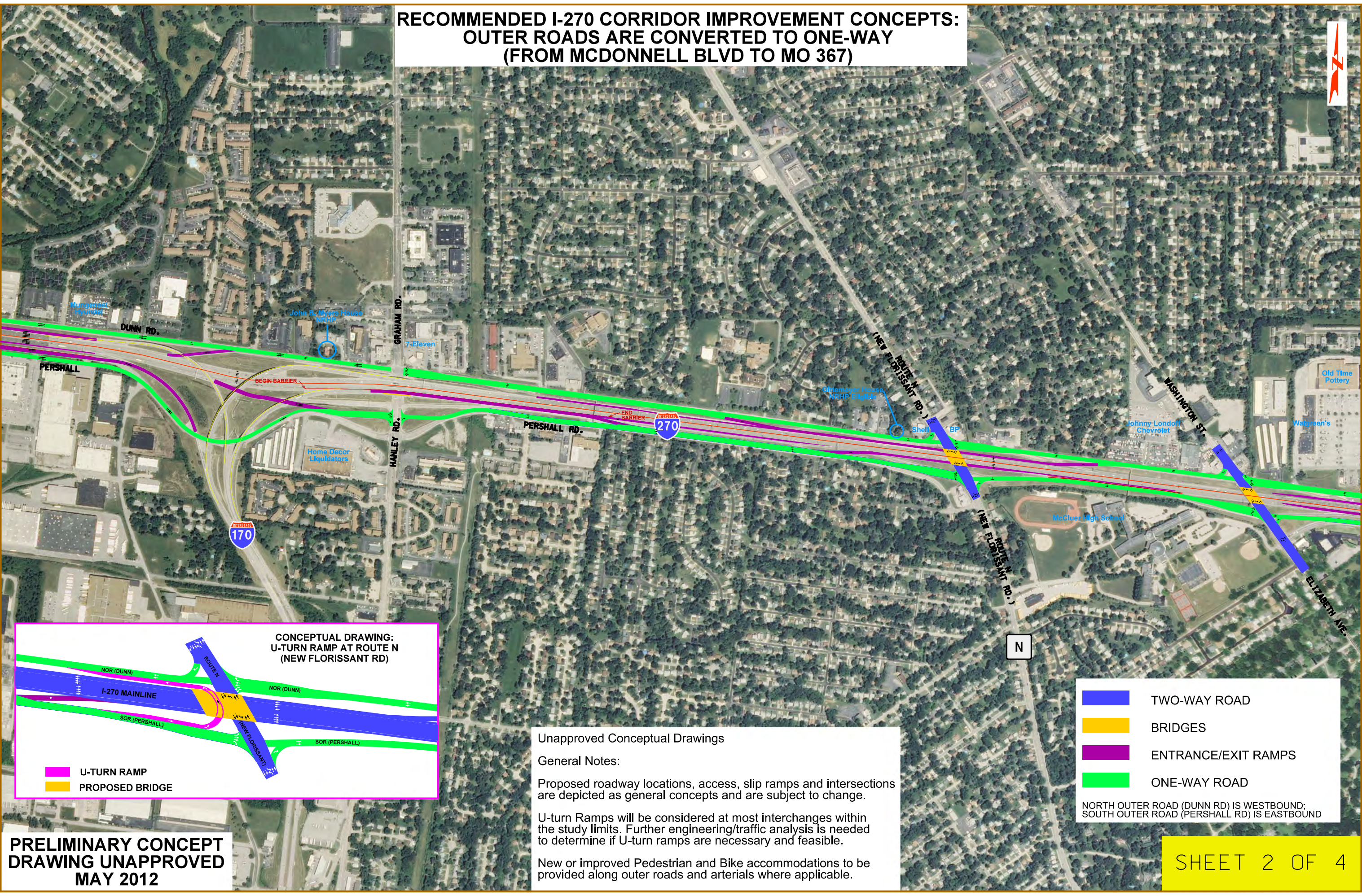
U-turn Ramps will be considered at most interchanges within the study limits. Further engineering/traffic analysis is needed to determine if U-turn ramps are necessary and feasible.

New or improved Pedestrian and Bike accommodations to be provided along outer roads and arterials where applicable.

- TWO-WAY ROAD
 - BRIDGES
 - ENTRANCE/EXIT RAMPS
 - ONE-WAY ROAD
- NORTH OUTER ROAD (DUNN RD) IS WESTBOUND;
SOUTH OUTER ROAD (PERSHALL RD) IS EASTBOUND

**PRELIMINARY CONCEPT
DRAWING UNAPPROVED
MAY 2012**

**RECOMMENDED I-270 CORRIDOR IMPROVEMENT CONCEPTS:
OUTER ROADS ARE CONVERTED TO ONE-WAY
(FROM MCDONNELL BLVD TO MO 367)**



Unapproved Conceptual Drawings

General Notes:

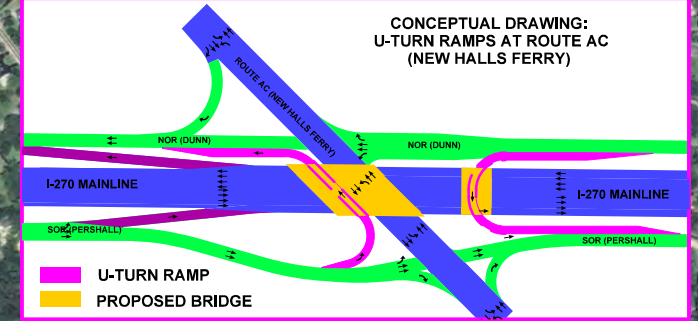
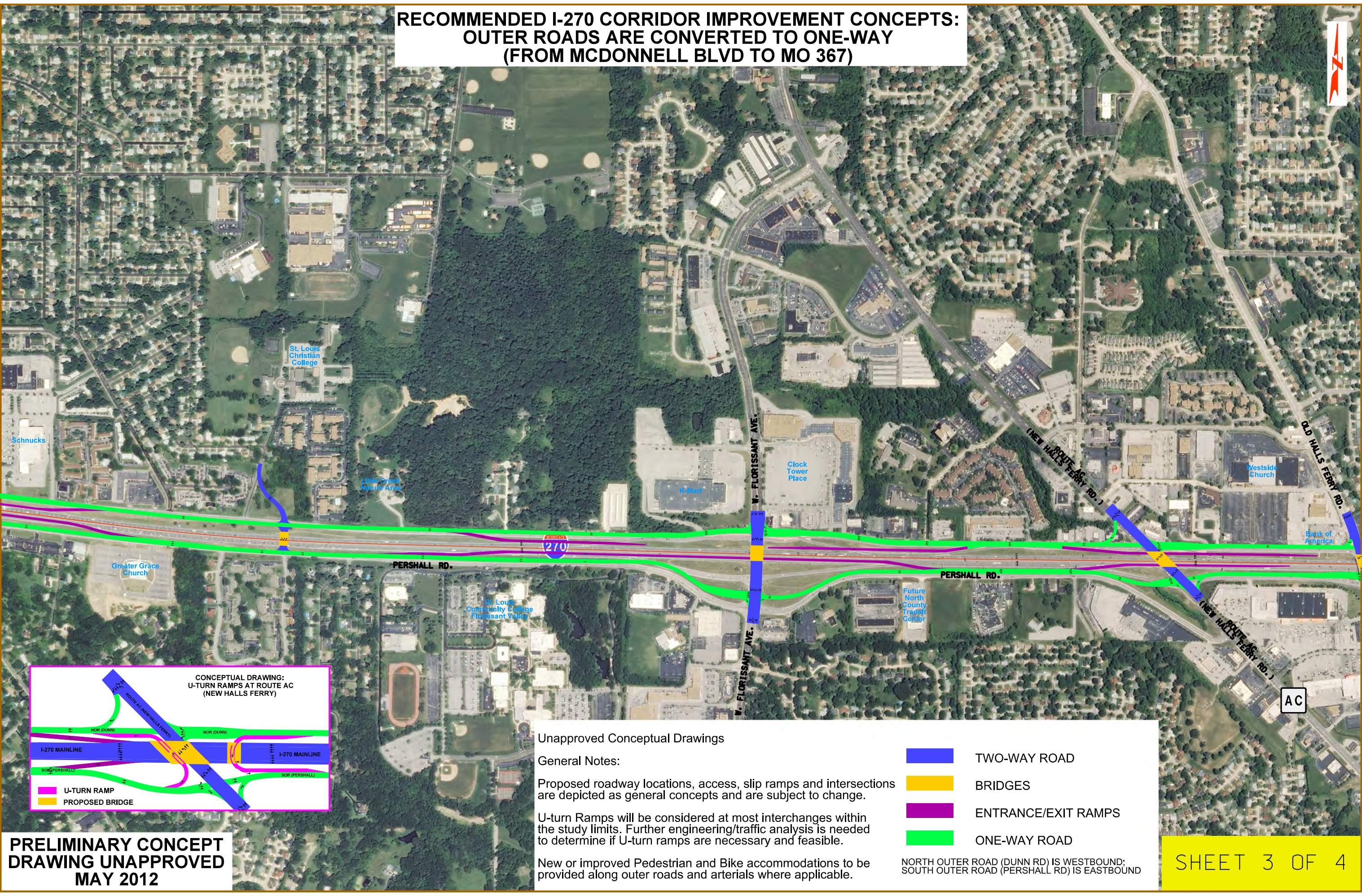
Proposed roadway locations, access, slip ramps and intersections are depicted as general concepts and are subject to change.

U-turn Ramps will be considered at most interchanges within the study limits. Further engineering/traffic analysis is needed to determine if U-turn ramps are necessary and feasible.

New or improved Pedestrian and Bike accommodations to be provided along outer roads and arterials where applicable.

- █ TWO-WAY ROAD
 - █ BRIDGES
 - █ ENTRANCE/EXIT RAMPS
 - █ ONE-WAY ROAD
- NORTH OUTER ROAD (DUNN RD) IS WESTBOUND;
SOUTH OUTER ROAD (PERSHALL RD) IS EASTBOUND

**RECOMMENDED I-270 CORRIDOR IMPROVEMENT CONCEPTS:
OUTER ROADS ARE CONVERTED TO ONE-WAY
(FROM MCDONNELL BLVD TO MO 367)**



Unapproved Conceptual Drawings

General Notes:

Proposed roadway locations, access, slip ramps and intersections are depicted as general concepts and are subject to change.

U-turn Ramps will be considered at most interchanges within the study limits. Further engineering/traffic analysis is needed to determine if U-turn ramps are necessary and feasible.

New or improved Pedestrian and Bike accommodations to be provided along outer roads and arterials where applicable.

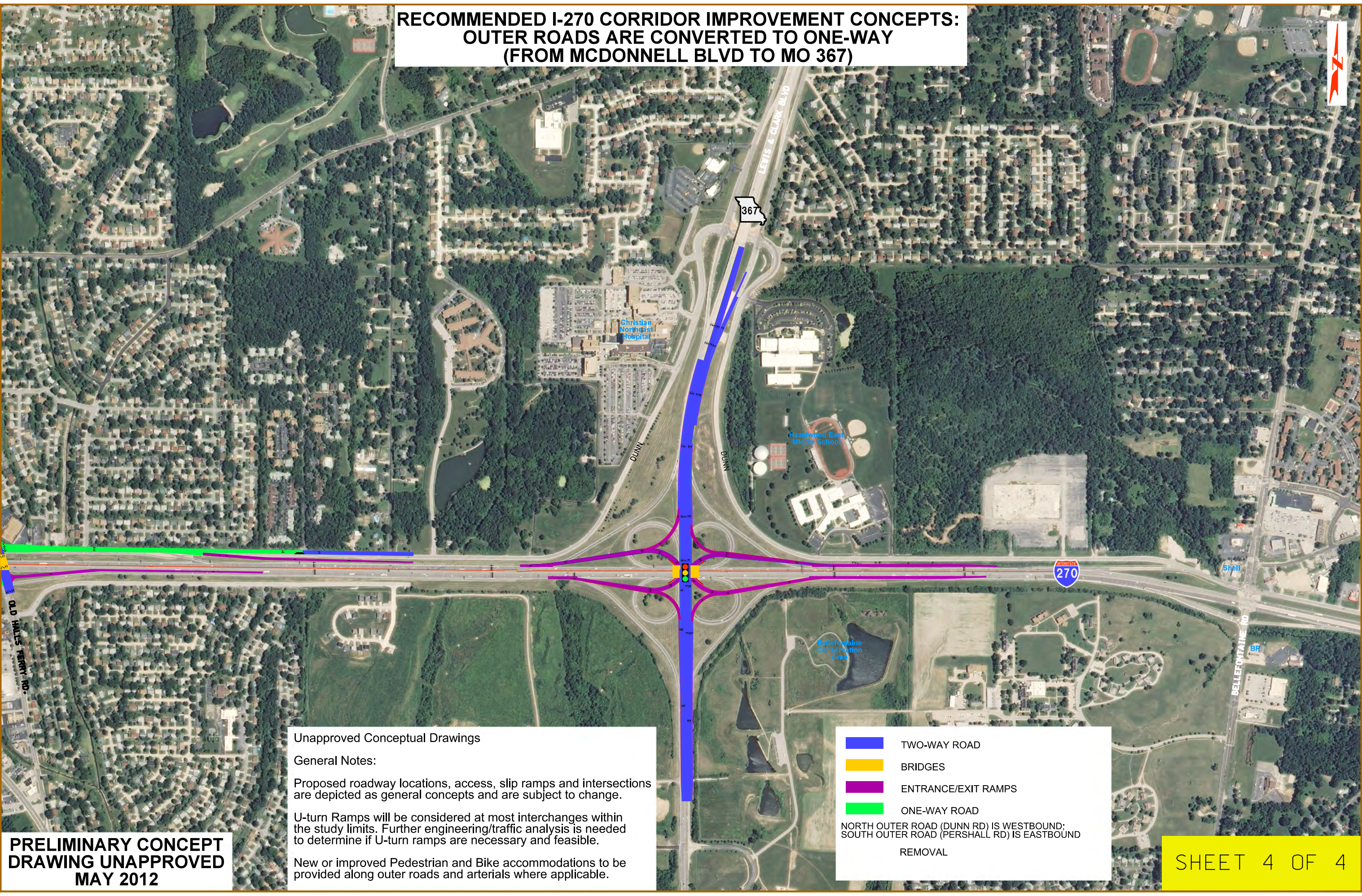
- TWO-WAY ROAD
- BRIDGES
- ENTRANCE/EXIT RAMPS
- ONE-WAY ROAD

NORTH OUTER ROAD (DUNN RD) IS WESTBOUND;
SOUTH OUTER ROAD (PERSHALL RD) IS EASTBOUND

**PRELIMINARY CONCEPT
DRAWING UNAPPROVED
MAY 2012**





AC

**RECOMMENDED I-270 CORRIDOR IMPROVEMENT CONCEPTS:
OUTER ROADS ARE CONVERTED TO ONE-WAY
(FROM MCDONNELL BLVD TO MO 367)**



Unapproved Conceptual Drawings

General Notes:
Proposed roadway locations, access, slip ramps and intersections are depicted as general concepts and are subject to change.
U-turn Ramps will be considered at most interchanges within the study limits. Further engineering/traffic analysis is needed to determine if U-turn ramps are necessary and feasible.
New or improved Pedestrian and Bike accommodations to be provided along outer roads and arterials where applicable.

	TWO-WAY ROAD
	BRIDGES
	ENTRANCE/EXIT RAMPS
	ONE-WAY ROAD
	NORTH OUTER ROAD (DUNN RD) IS WESTBOUND; SOUTH OUTER ROAD (PERSHALL RD) IS EASTBOUND
	REMOVAL

**PRELIMINARY CONCEPT
DRAWING UNAPPROVED
MAY 2012**