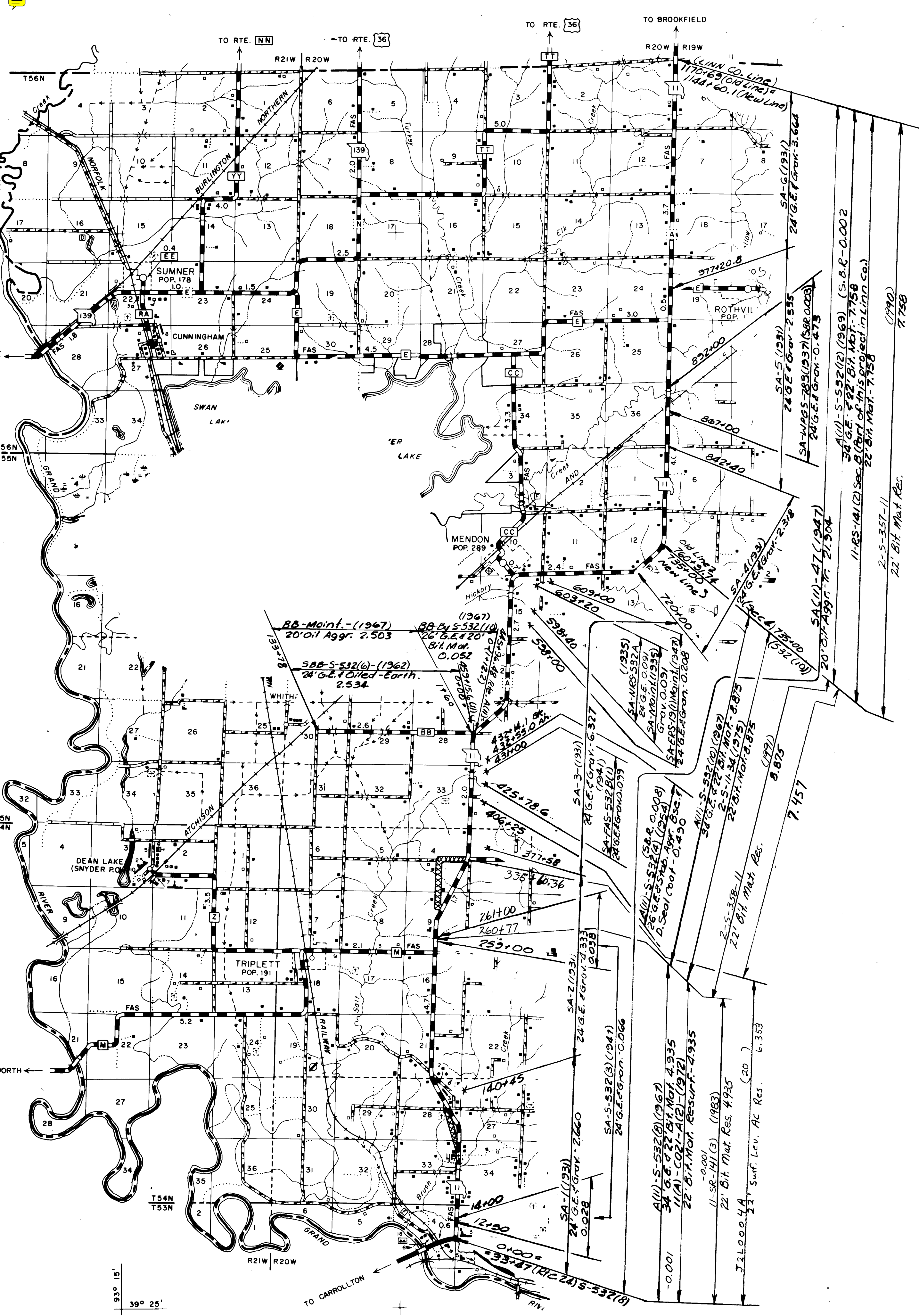
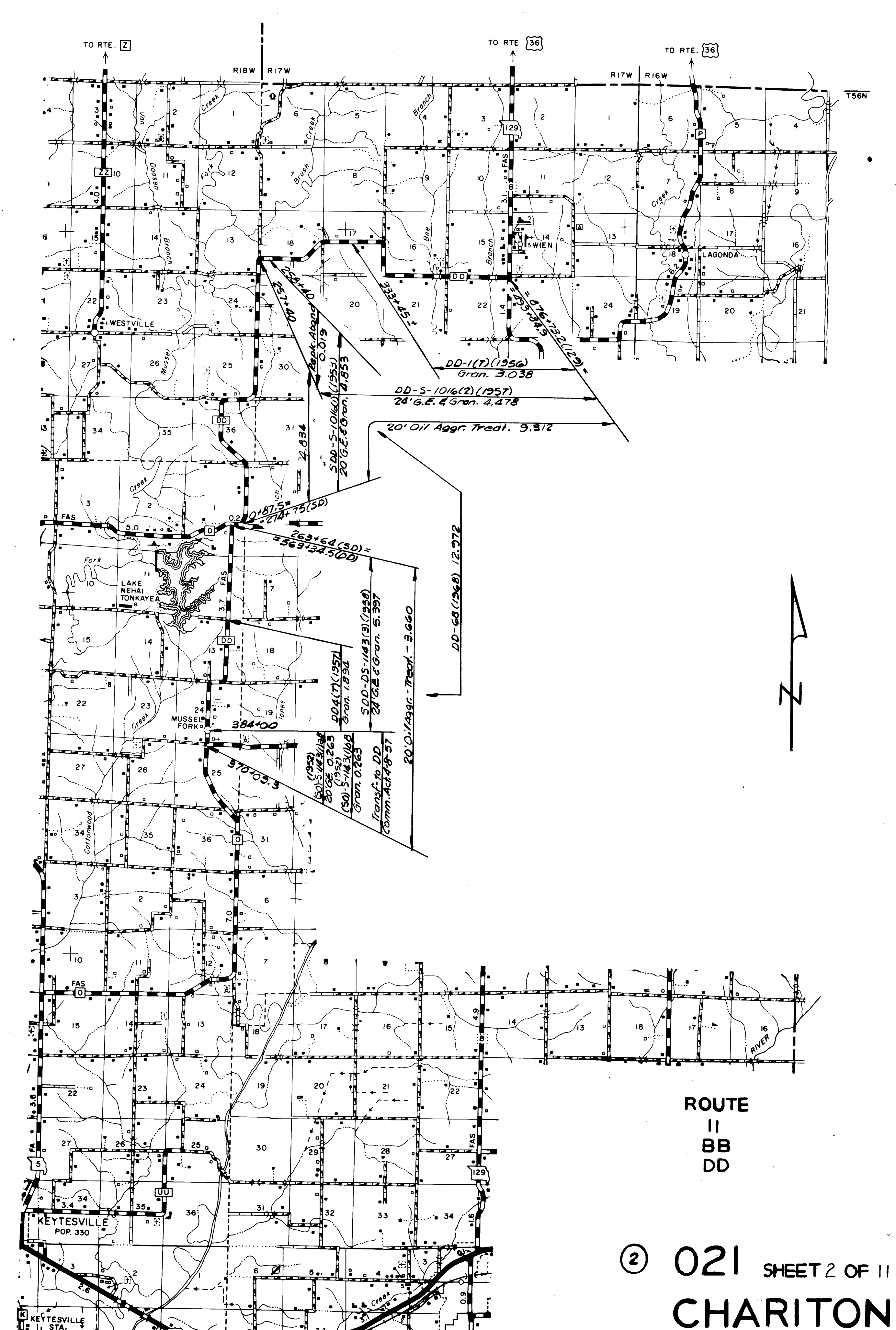


ROUTES  
5  
C

② 021 SHEET 1 OF 11  
CHARITON



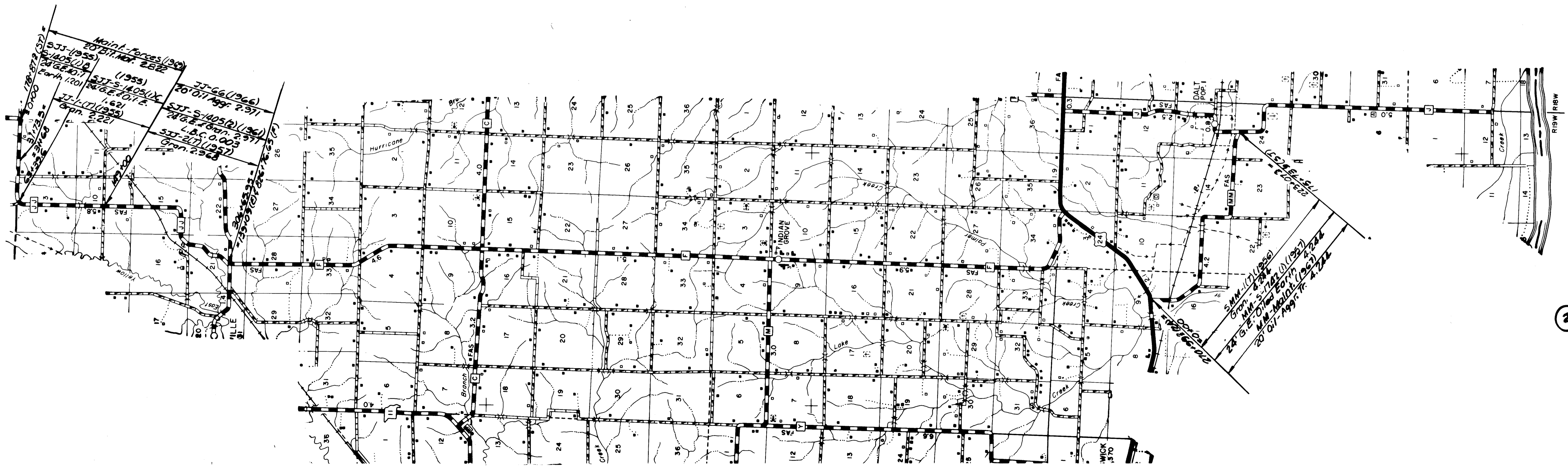
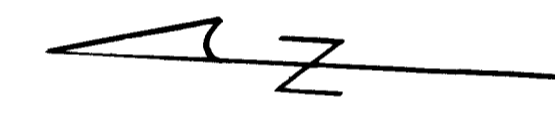
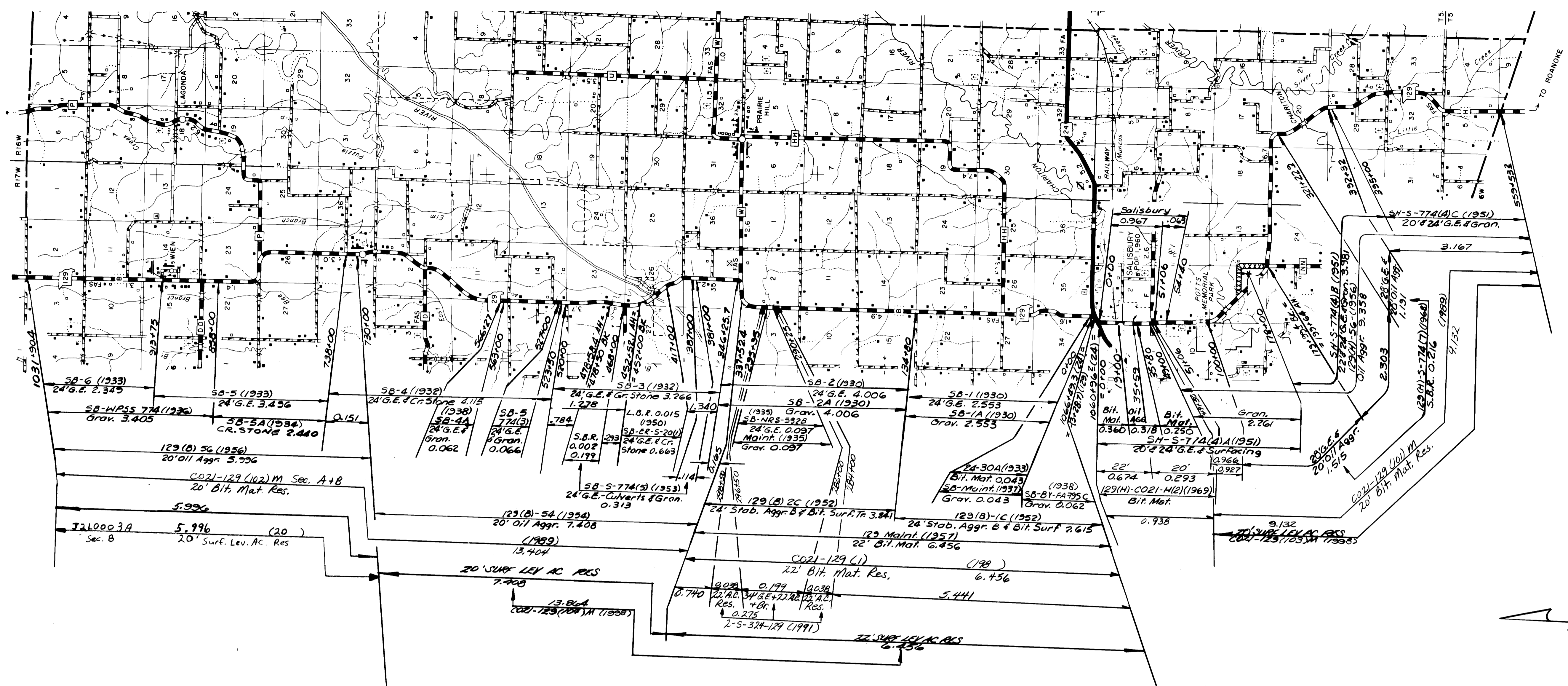
TO MARCELINE  
MARCELINE



ROUTE  
11  
BB  
DD

② 021 SHEET 2 OF 11  
CHARITON

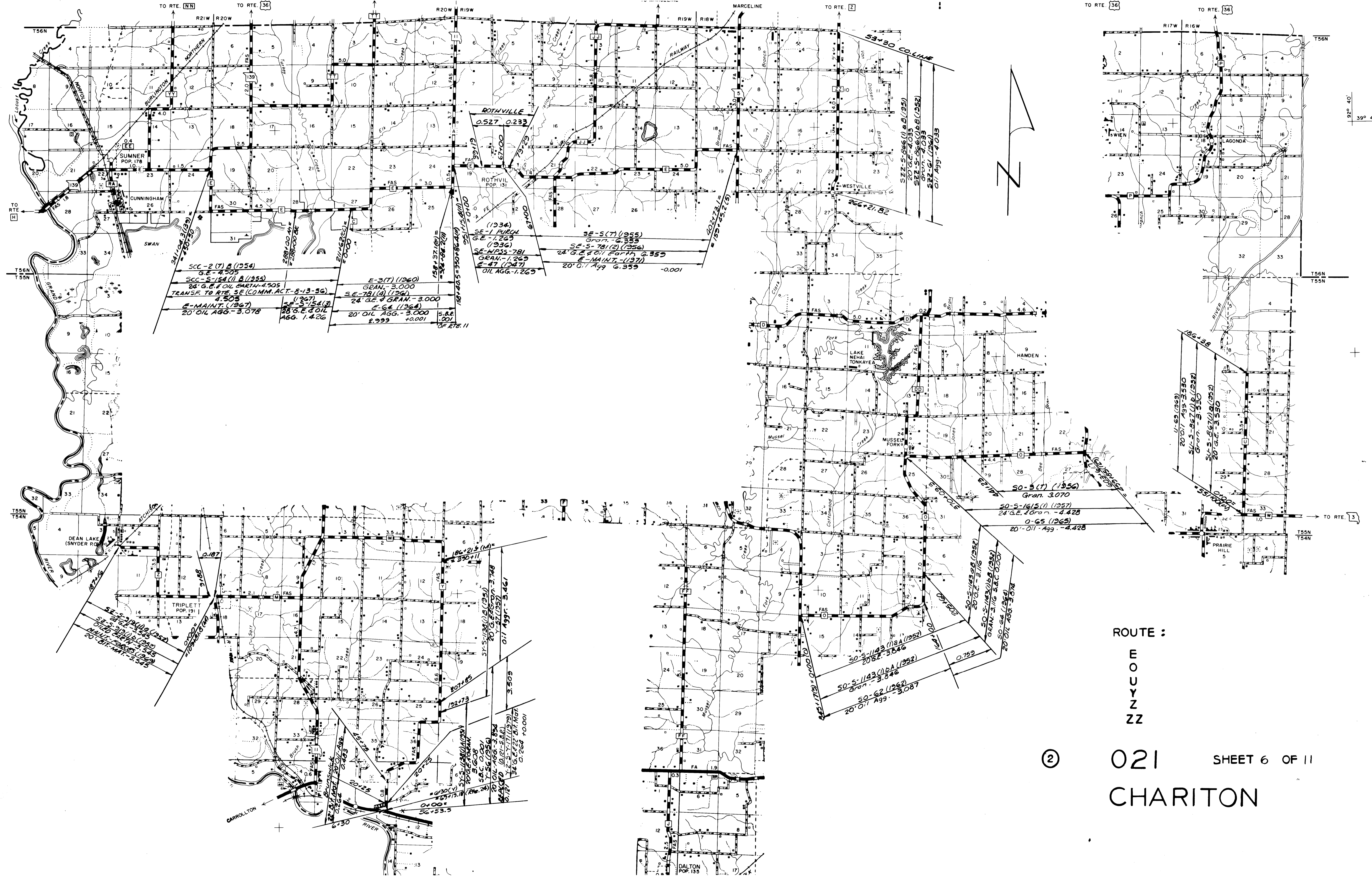




ROUTE :  
 129 (B&H)  
 JJ  
 MM

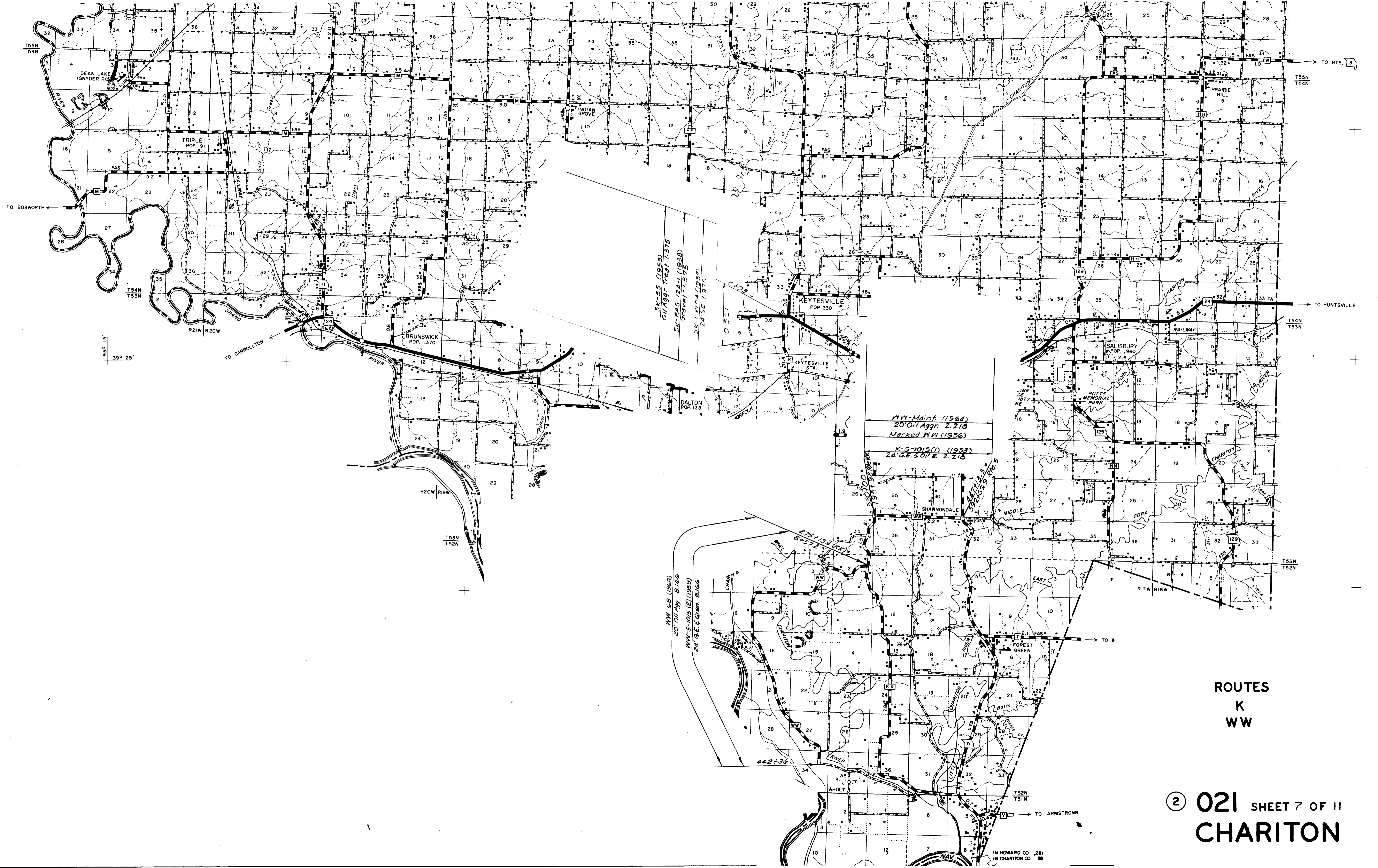
② 021 SHEET 4 OF 11  
 CHARITON





ROUTE :  
E  
O  
U  
Y  
Z  
Z

② 021 SHEET 6 OF 11  
CHARITON



SK-55 (1955)  
 Oil Aggr. Team 1.375  
 SK-FAS 1241 (1938)  
 GRAVEL 1.375  
 SK-L.P. 24 (1937)  
 24' G.E. 1.375

W.W. Maint. (1964)  
 20' Oil Aggr. 2.215  
 Marked W.W. (1956)  
 K-S-1015(1) (1953)  
 24' G.E. 2.01 E. 2.215

W.W.-68 (1968)  
 20' Oil Aggr. 8.166  
 W.W.-S-1015 (2) (1953)  
 24' G.E. 2.01 E. 8.166

ROUTES  
 K  
 WW

② 021 SHEET 7 OF 11  
 CHARITON

IN HOWARD CO. 1,281  
 IN CHARITON CO. 58



ROUTES  
 P  
 CC  
 YY

② 021 SHEET 8 OF 11  
 CHARITON

39° 25'  
 93° 15'

39° 40'  
 92° 40'







