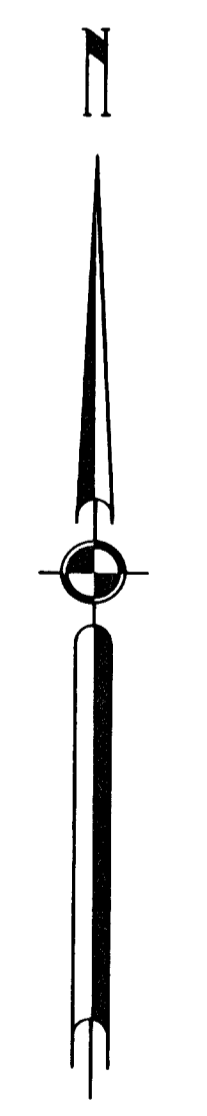
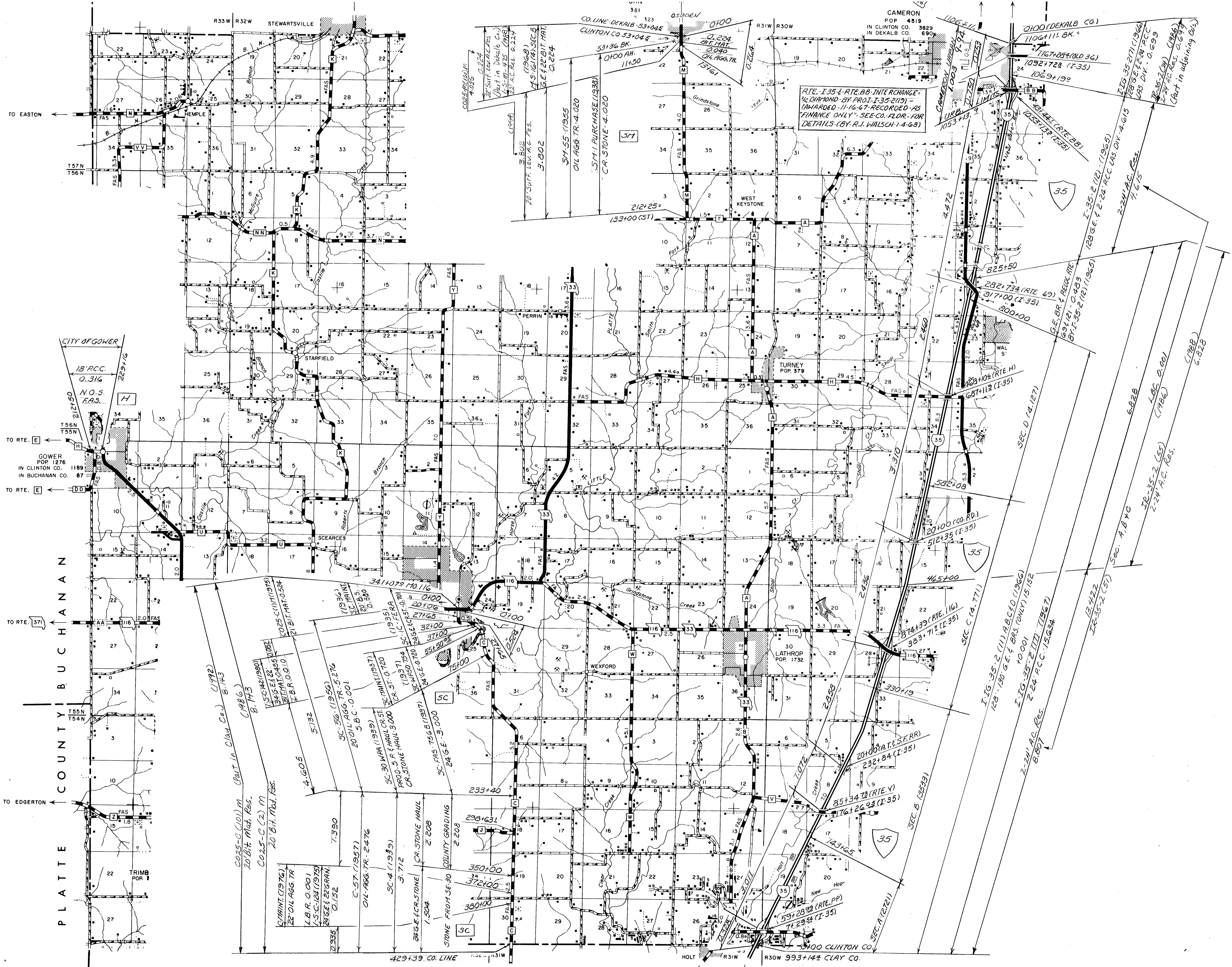


ROUTE:  
A

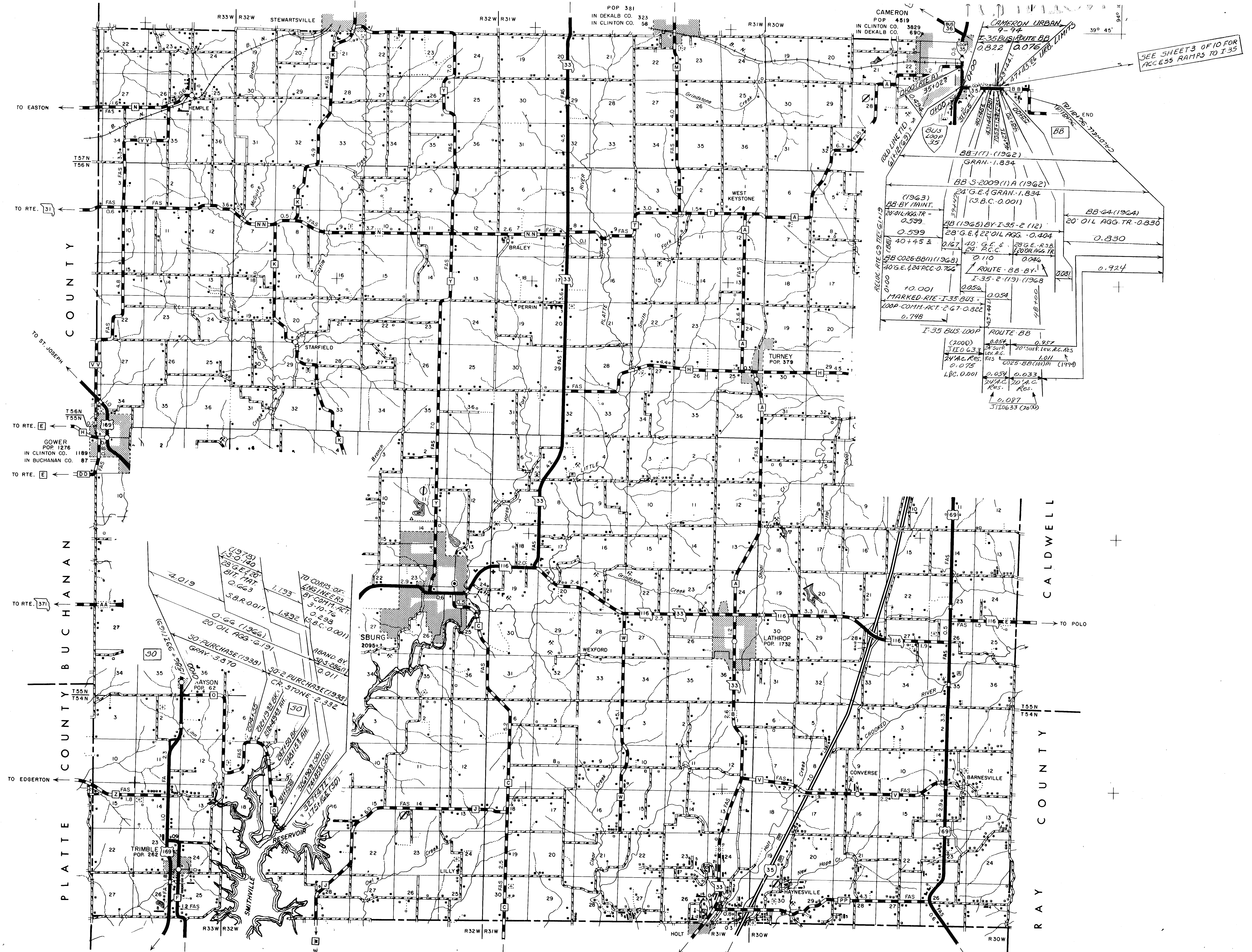
025 SHEET 2 OF 10  
CLINTON





ROUTES:  
 35  
 C  
 H - PART  
 M





SEE SHEETS OF 10 FOR ACCESS RAMPS TO I-35

**CAMERON**  
POP 4519  
IN CLINTON CO. 3829  
IN DEKALB CO. 690

**CAMERON URBAN**  
POP 924

**I-35 BUS ROUTE BB**  
0.822 0.076

**SEE SHEETS OF 10 FOR ACCESS RAMPS TO I-35**

BB-17 (1962)  
GRAN.-1.834

BB-S-2009(11)A (1962)  
24' G.E. & GRAN.-1.834  
(3 B.C.-0.001)

BB-64 (1964)  
20' OIL AGG. TR.-0.830

BB (1965) BY I-35-2 (12)  
28' G.E. & 22' OIL AGG.-0.404

40' G.E. & 28' G.E.-R.38  
24' P.C.C. 1.001

ROUTE-BB-BY-1  
I-35-2 (19) (1968)  
0.110 0.046

10.001 0.054

MARKED-RTE-I-35-BUS-  
LOOP-COMM. ACT-2-67-0.822

0.748

I-35 BUS LOOP

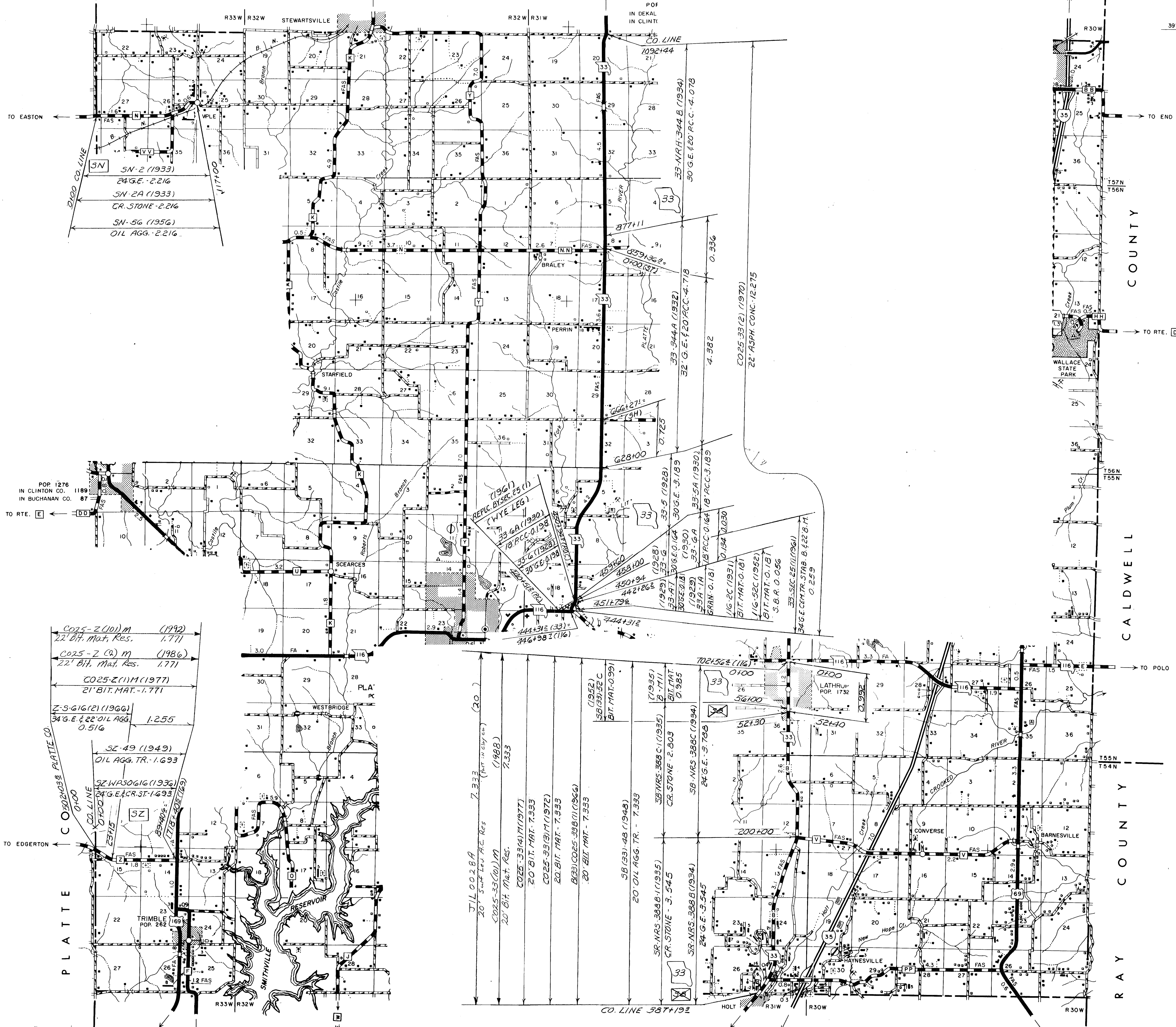
ROUTE-BB

(2000) 0.054 0.957  
3110 633 24' SURF. Lev. A.C. Res 1.001  
24' A.C. Res. 0.075 0.033  
1.8 C. 0.001 24' A.C. Res. 1.001

0.087  
3110 633 (2000)

ROUTES:  
35-BUS LOOP  
BB

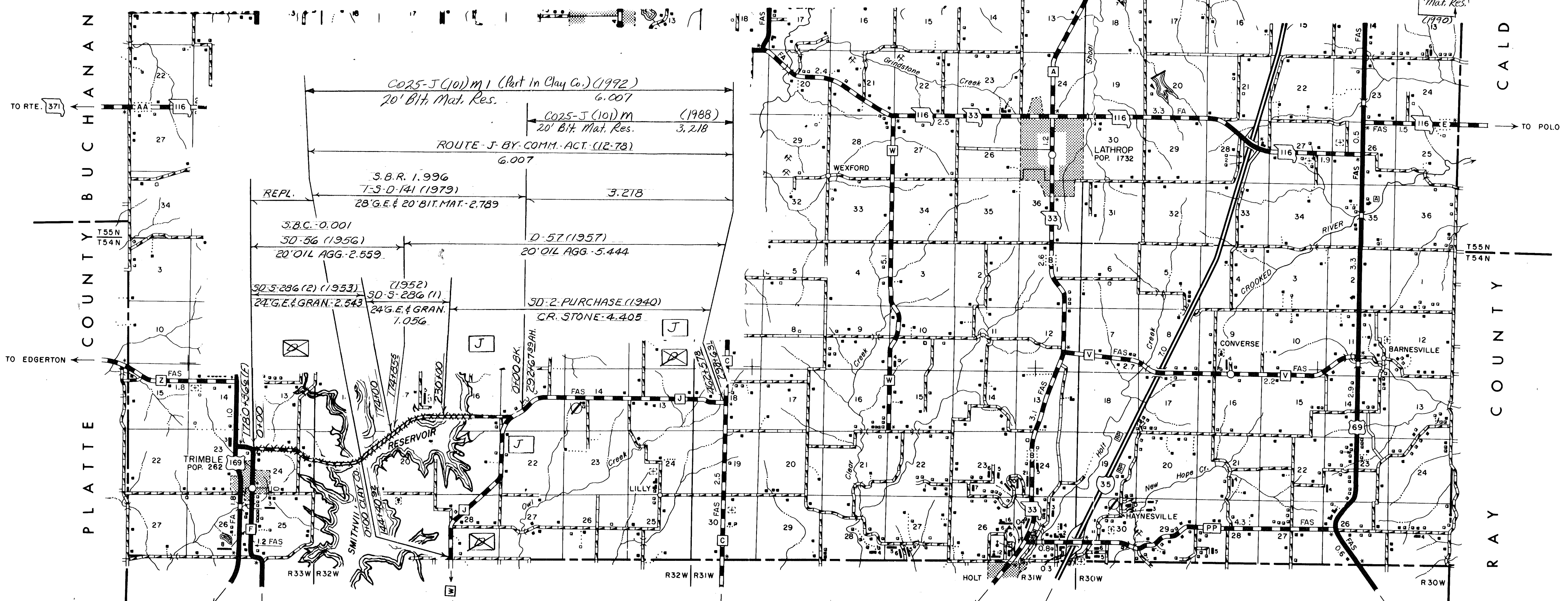
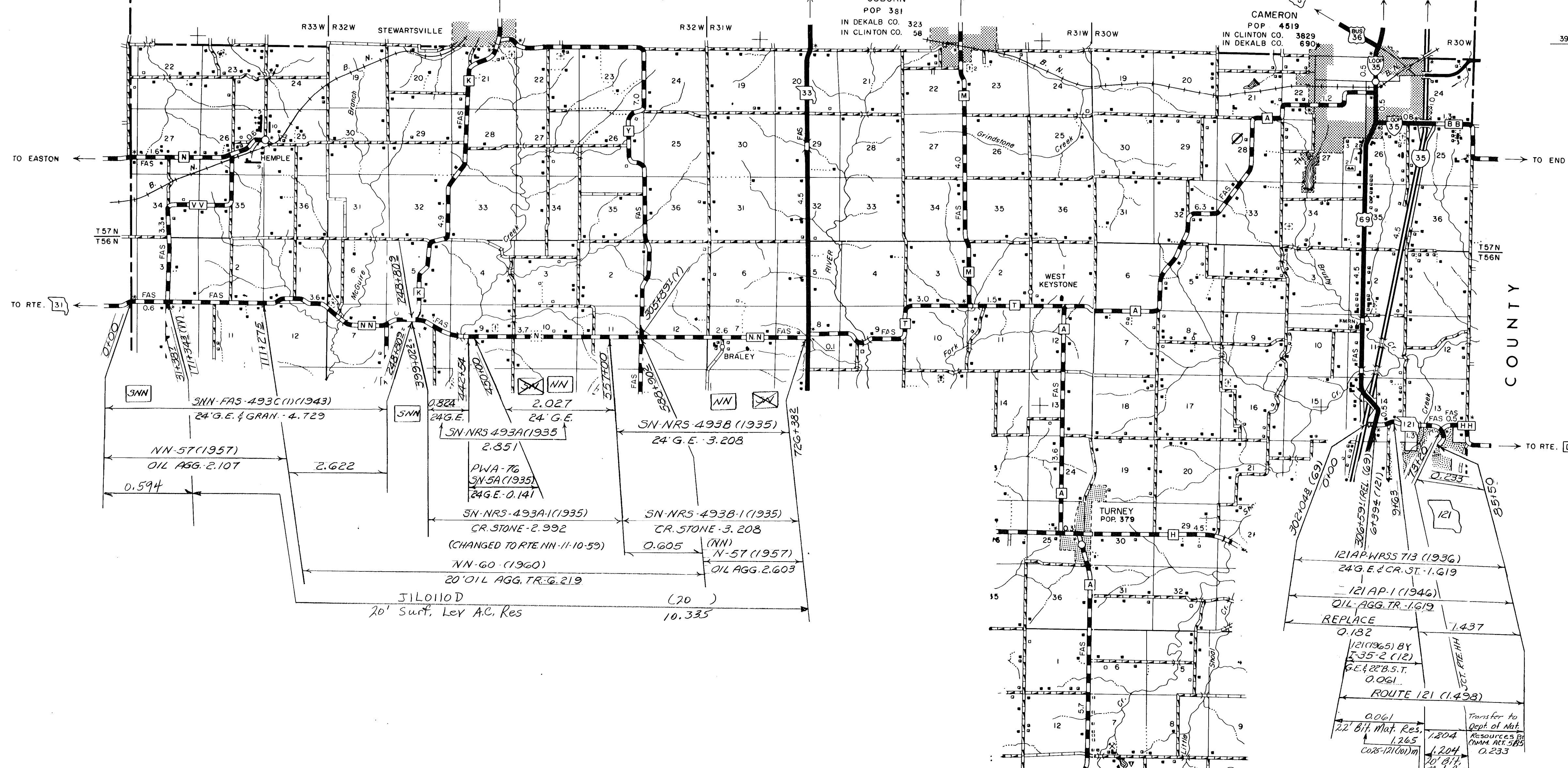




RAY COUNTY CALDWELL COUNTY

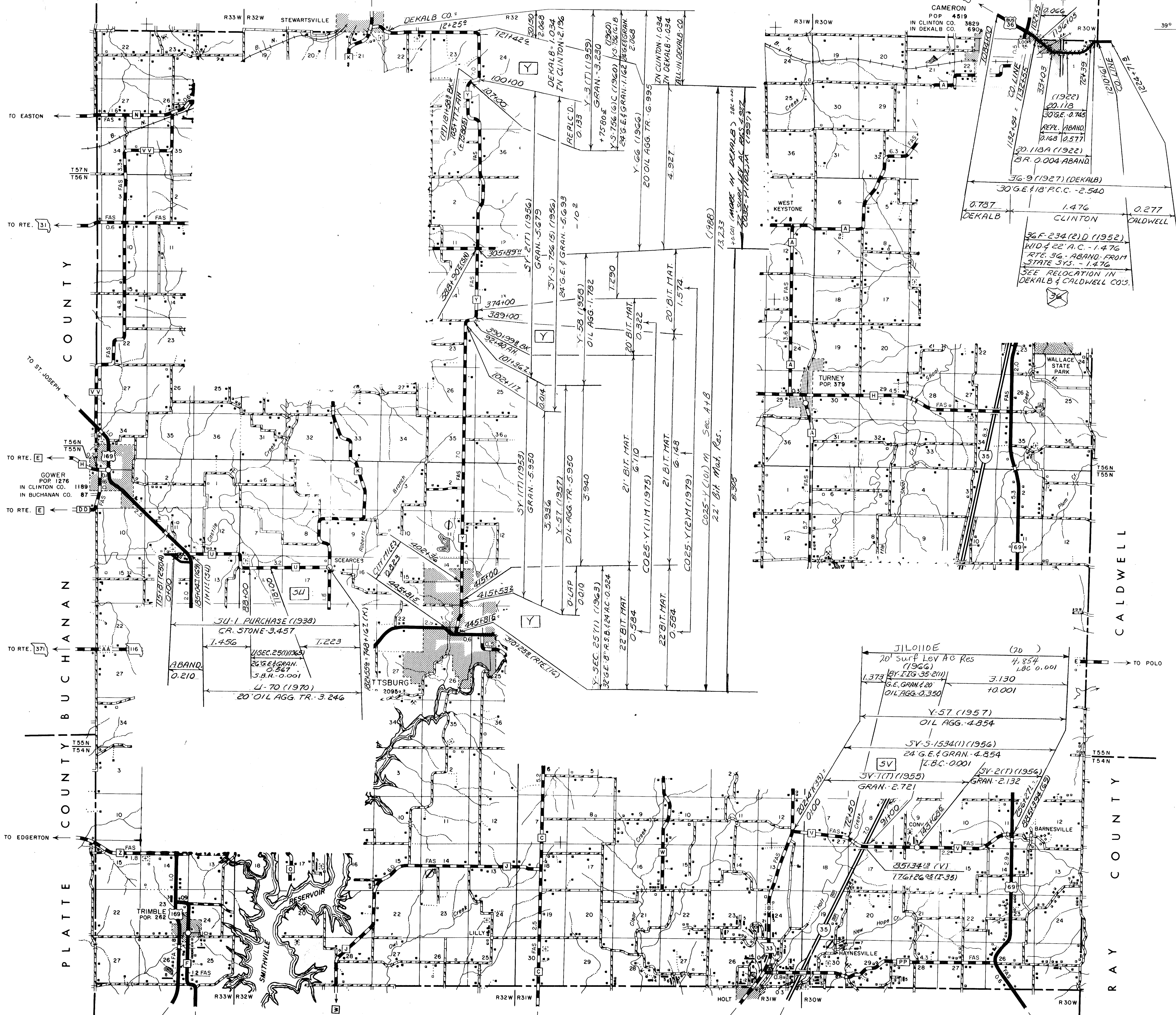
ROUTES:  
33  
71  
Z





ROUTES:  
 121 -  
 NN -  
 J -





ROUTES:  
 36-RELOCATED IN DEKALB CO.  
 U-  
 V-  
 Y-



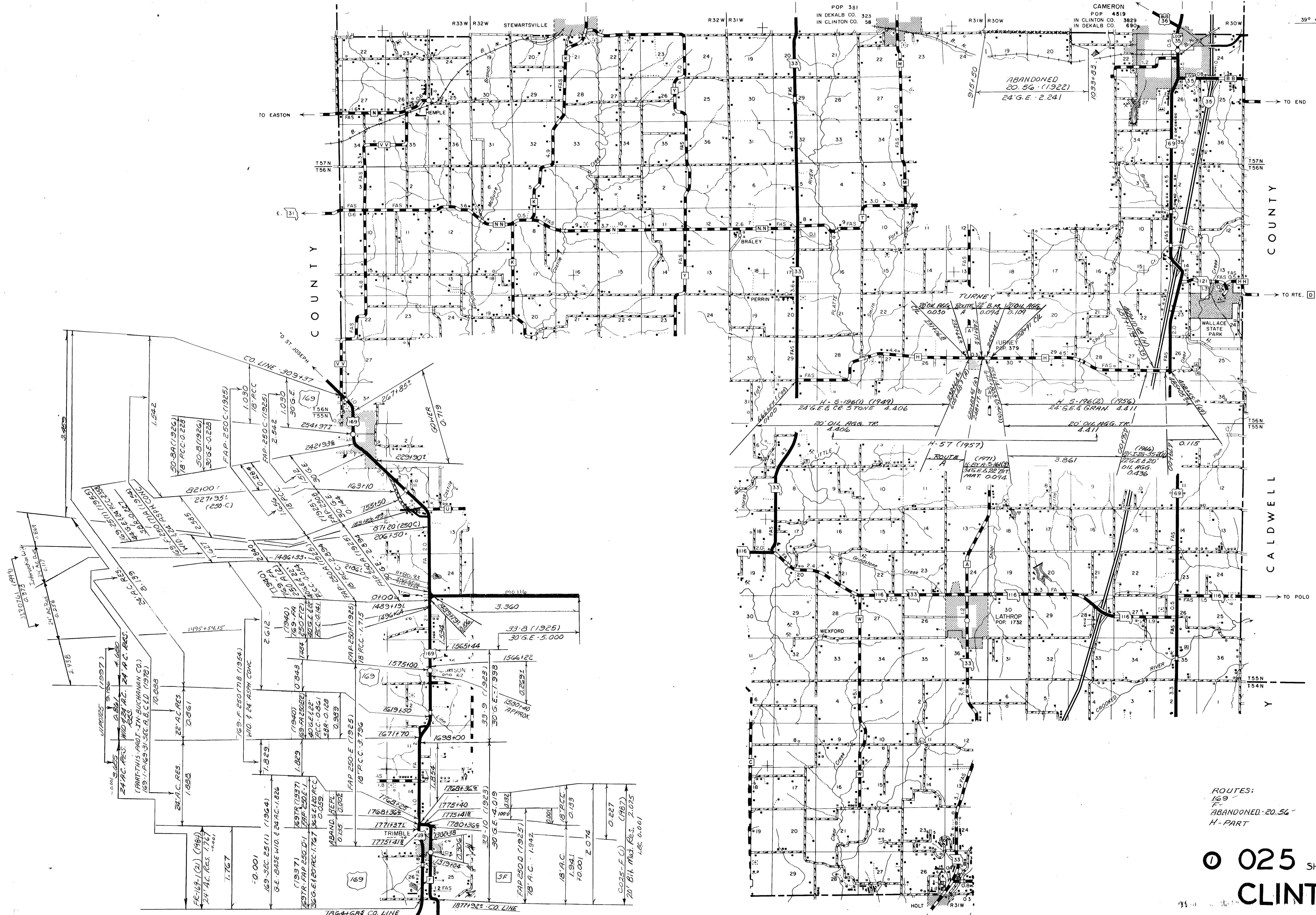






ROUTES:  
116 (E-AA)





ROUTES:  
 169  
 F-  
 ABANDONED-20.56  
 H-PART