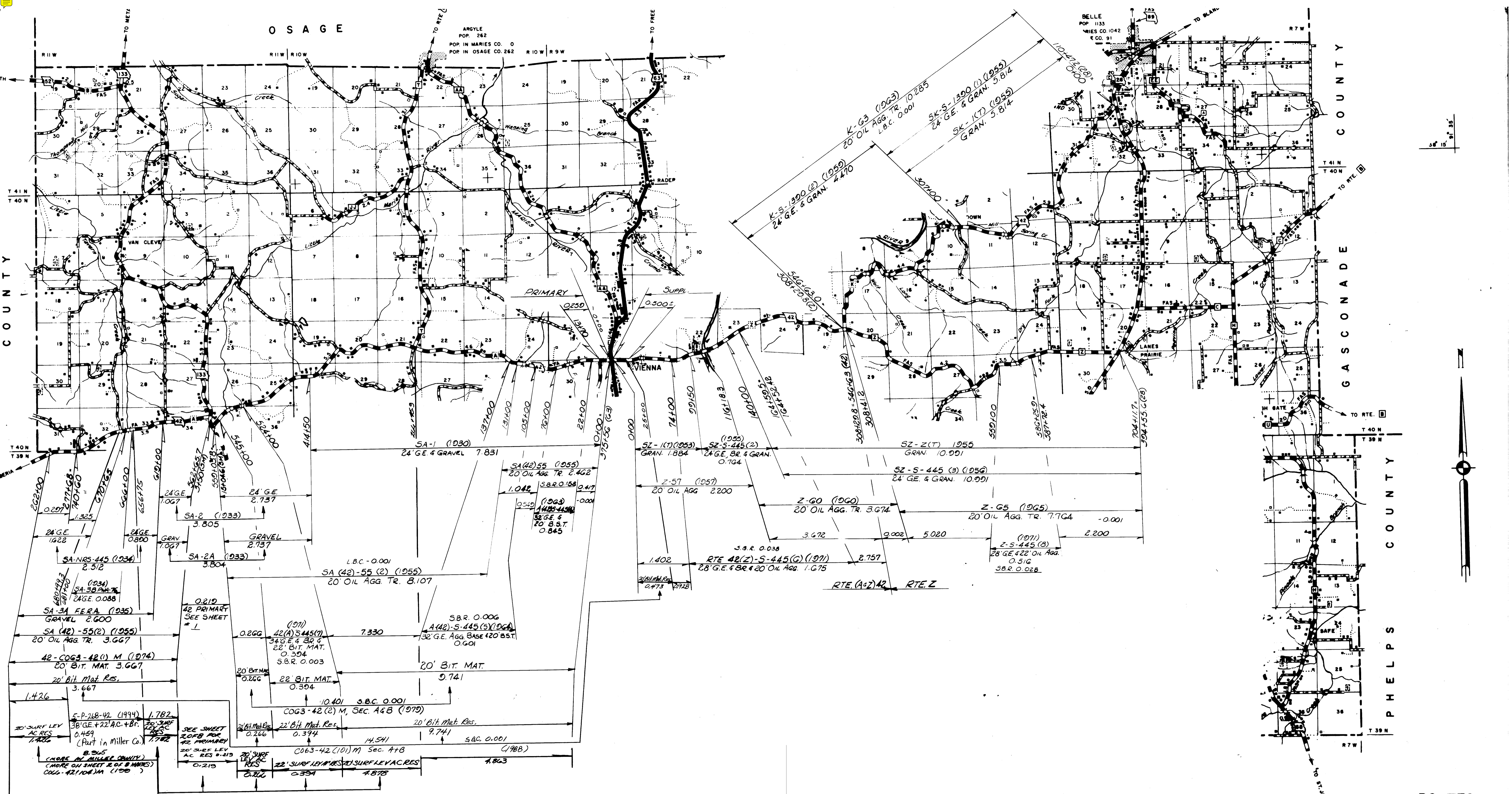


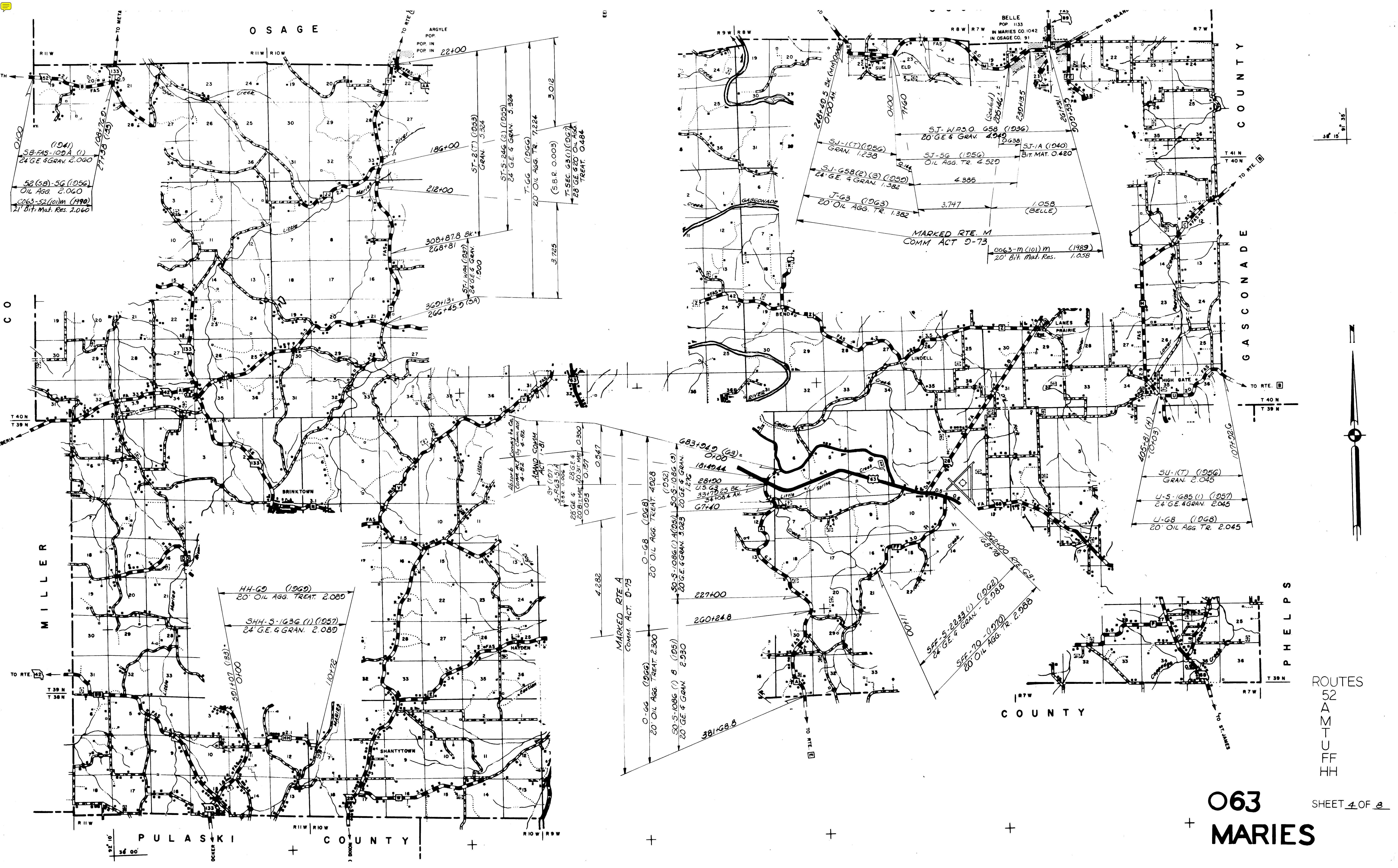
ROUTES
42 PART
133
H
EE
SHEET 1 OF 3

O63
MARIES



ROUTES
42 PART
Z

O63
MARIES



OSAGE

GASCONADE COUNTY

MILLER COUNTY

COUNTY

PULASKI COUNTY

PHELPS

O63
MARIES

SHEET 4 OF 8

(1941)
SB-FAS-100A (1)
24 GE & GRAN. 2.060

52(SB)-56 (1956)
OIL AGG. 2.060

CO63-52 (10) M (1990)
21 Bit. Mat. Res. 2.060

186+00

212+00

308+87.8 BK
268+81

360+13
266+45.0 (SA)

ST-2 (T) (1955)
GRAN. 3.304

ST-5-246 (2) (1955)
24 GE & GRAN. 5.304

T-66 (1956)
20' OIL AGG. TR. 7.224

(S.B.R. 0.003)
T-SEC. 65(1) (1967)
28 GE & 20' OIL AGG.
TREAT. 0.484

Abandon to Co
Comm Act by Comm Act
4-8-82

ABAND COMM
ACT 1-81

BY (197)
5-26-63-51A
5.266 0.006
28 GE & 28 GE & 4
20' OIL AGG. TR. 0.300

MARKED RTE A
COMM. ACT. 9-75

O-66 (1966)
20' OIL AGG. TREAT. 2.300

50-S-1086 (1) B (1951)
20' GE & GRAN. 2.930

683-040 (G3)-
0700

18+04.4

28+00
U.S. G3
33+70.25 BK
54+08.4 AH
67+40

(1952)
50-S-1086 (1) A (1951)
20' GE & GRAN. 3.023

227+00

260+24.8

381+68.8

111+00

SFF 5-22-23 (1) (1962)
24 GE & GRAN. 2.988

SFF 70-1 (1970)
20' OIL AGG. TR. 2.988

200+00 (H)
107+28

SU-17 (1956)
GRAN. 2.045

U-S-1685 (1) (1957)
24 GE & GRAN. 2.045

U-68 (1968)
20' OIL AGG. TR. 2.045

MARKED RTE. M
COMM ACT 9-73

CO63-M (10) M (1989)
20' Bit. Mat. Res. 1.058

SJ-1 (T) (1956)
GRAN. 1.238

SJ-56 (1956)
OIL AGG. TR. 4.520

SJ-G58 (2) (3) (1950)
24 GE & GRAN. 1.382

J-63 (1963)
20' OIL AGG. TR. 1.382

3.747

1.058
(BELLE)

SJ-WP50 G58 (1936)
20' GE & GRAN. 2.949

2.638

SJ-A (1940)
BIT. MAT. 0.480

2.160

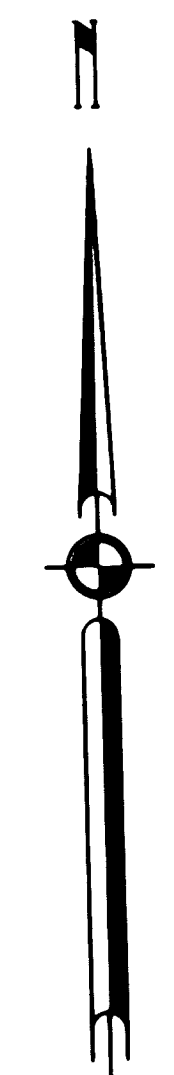
230+45

261+81

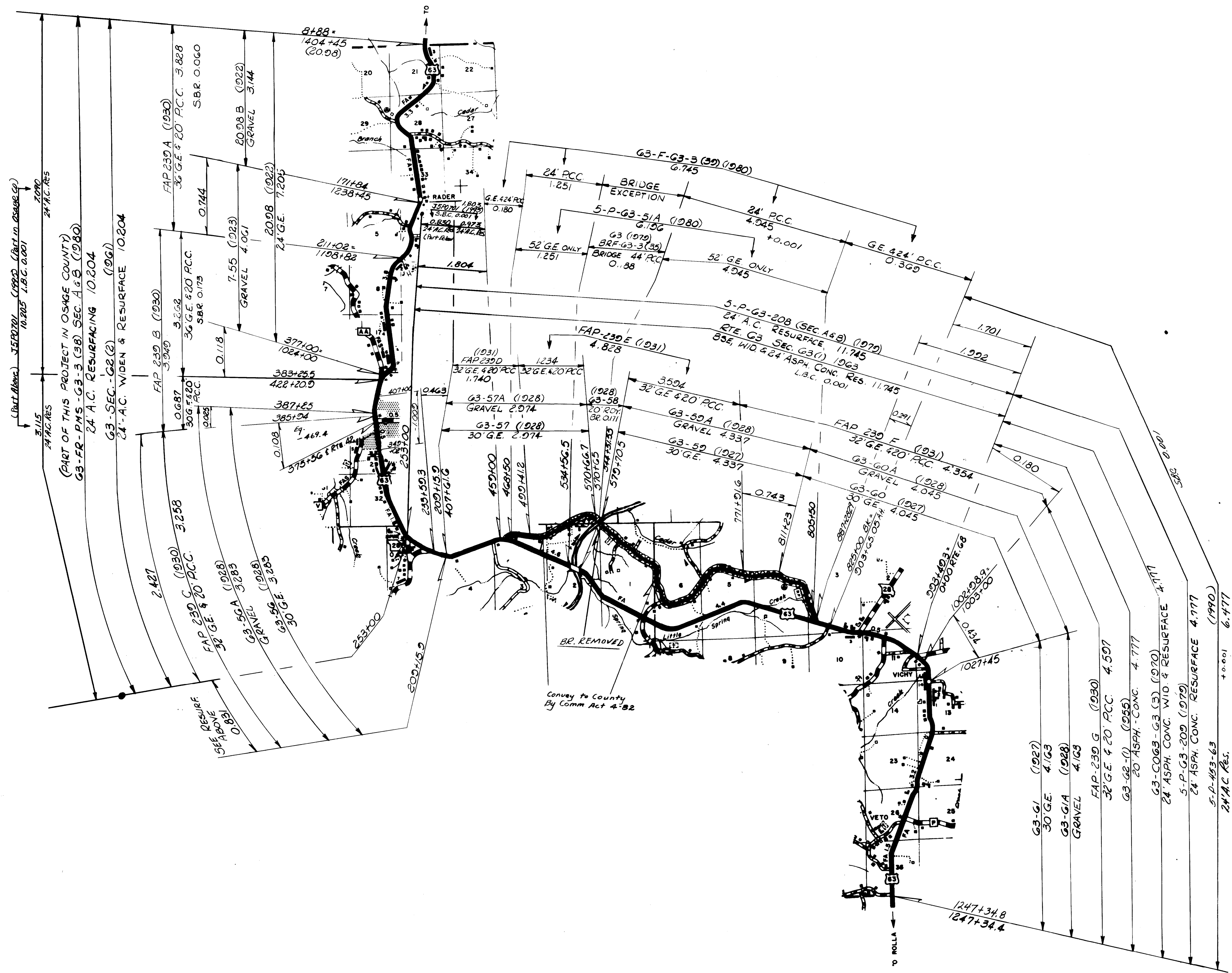
300+52

BELLE
POP. 1133
IN MARIES CO. 1042
IN OSAGE CO. 91

36° 15'



ROUTES
52
A
M
T
U
FF
HH



(Part Above) 15170707 (1990) (Part to Below G)
 10.205 1.B.C. 0.001

3115
 24 ACRES
 (PART OF THIS PROJECT IN OSAGE COUNTY)
 G3-FR-PMS-G3-3 (38) SEC. A & B (1980)
 24' A.C. RESURFACING 10.204
 G3-SEC.-G2(2) (1961)
 24' A.C. WIDEN & RESURFACE 10.204

SEE RESURF
 ABOVE
 0.891

2.427
 FAP-230 C (1930)
 32' GE 420 PCC.
 3.258
 G3-50A (1928)
 GRAVEL 3.283
 G3-56 (1928)
 30' GE 3.285

FAP-230 B (1930)
 36' GE 420 PCC.
 3.252
 SBR. 0.175

0.687
 308' PCC.
 0.028

0.744
 FAP-230 A (1930)
 36' GE 420 PCC.
 3.828
 SBR. 0.060

20.98 B (1922)
 GRAVEL 3.144

2.4' GE. 7.205
 20.98 (1922)

0.118
 36' GE 420 PCC.
 0.028

7.55 (1923)
 GRAVEL 4.001

1.804
 BRIDGE 44' PCC
 0.188

0.463
 32' GE 420 PCC
 1.740

0.180
 G.E. 424' PCC

0.745
 G3-F-G3-3 (39) (1980)

4.828
 FAP-230 E (1931)

1.251
 24' PCC
 BRIDGE EXCEPTION

0.156
 5-P-G3-51A (1980)

4.945
 24' PCC

0.369
 G.E. 424' PCC.

0.001
 52' GE ONLY

4.945
 52' GE ONLY

1.701
 24' A.C. RESURFACE 11.745
 RTE G3 SEC. G3(1) 1963
 85% WID 4' 24' ASPH CONC. RES.
 L.B.C. 0.001

1.992
 32' GE 420 PCC
 4.354

0.180
 FAP-230 F (1931)

0.291
 32' GE 420 PCC
 4.354

0.743
 G3-G0A (1928)
 GRAVEL 4.337

0.743
 G3-G0 (1927)
 30' GE 4.045

0.434
 30' GE 4.045

4.777
 FAP-230 G (1930)

4.597
 32' GE 420 PCC.

4.777
 20' ASPH.-CONC.

4.777
 G3-C063-G3 (3) (1970)

4.777
 24' ASPH. CONC. WID. & RESURFACE

4.777
 5-P-G3-209 (1979)

4.777
 24' ASPH. CONC. RESURFACE

4.777
 5-P-453-63 (1990)

6.477
 24' A.C. RES.

6.477
 24' A.C. RES.

1247+34.8
 1247+34.4

1027+45

805+50

771+91.6

570+70.5

570+66.7

570+65

570+63

570+61.2

490+41.2

468+50

459+00

235+00

235+00

235+00

235+00

235+00

235+00

235+00

235+00

235+00

235+00

235+00

235+00

235+00

235+00

235+00

235+00

235+00

235+00

235+00

235+00

235+00

235+00

235+00

235+00

235+00

235+00

235+00

235+00

235+00

235+00

235+00

235+00

235+00

235+00

235+00

235+00

235+00

235+00

235+00

235+00

235+00

235+00

235+00

235+00

235+00

235+00

235+00

235+00

235+00

235+00

235+00

235+00

235+00

235+00

235+00

235+00

235+00

235+00

235+00

235+00

235+00

235+00

235+00

235+00

235+00

235+00

235+00

235+00

235+00

235+00

235+00

235+00

235+00

235+00

235+00

235+00

235+00

235+00

235+00

235+00

235+00

235+00

235+00

235+00

235+00

235+00

235+00

235+00

235+00

235+00

235+00

235+00

235+00

235+00

235+00

235+00

235+00

235+00

235+00

235+00

235+00

235+00

235+00

235+00

235+00

235+00

235+00

235+00

235+00

235+00

235+00

235+00

235+00

235+00

235+00

235+00

235+00

235+00

235+00

235+00

235+00

235+00

235+00

235+00

235+00

235+00

235+00

235+00

235+00

235+00

235+00

235+00

235+00

235+00

235+00

235+00

235+00

235+00

235+00

235+00

235+00

235+00

235+00

235+00

235+00

235+00

235+00

235+00

235+00

235+00

235+00

235+00

235+00

235+00

235+00

235+00

235+00

235+00

235+00

235+00

235+00

235+00

235+00

235+00

235+00

235+00

235+00

235+00

235+00

235+00

235+00

235+00

235+00

235+00

235+00

235+00

235+00

235+00

235+00

235+00

235+00

235+00

235+00

235+00

235+00

235+00

235+00

235+00

235+00

235+00

235+00

235+00

235+00

235+00

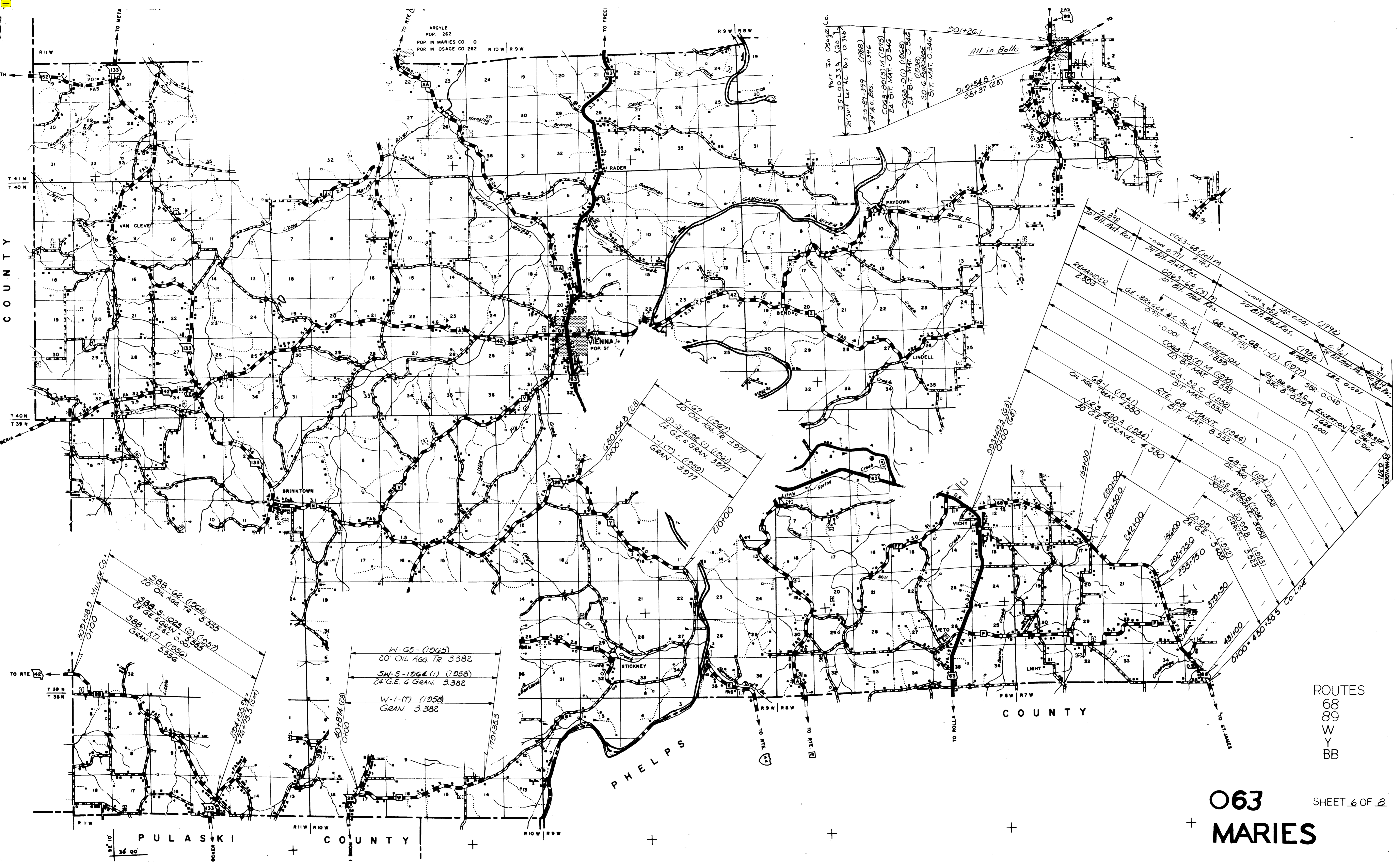
235+00

235+00

235+00

235+00

235+00



ARGYLE
POP. 262
POP. IN MARIES CO. 0
POP. IN OSAGE CO. 262

Part in Osage Co.
J.F. L. O. 33A (20)
24' Surf. Lev. AC. Res. 0.346
5-5-67-399 (1988)
24' AC. Res.
COG-80(3) M (1975)
24' BIT. MAT. 0.346
COG-80(1) (1968)
24' BIT. MAT. 0.346
S.D.G. BASE (1938)
BIT. MAT. 0.346

901+261
All in Belle
919+54.8
38+37 (28)

Y-67 (1967)
20' Oil Agg. Tr. 3977
5-2-2192 (1) (1961)
24' GE & GRAN. 3977
Y-1 (7) (1959)
GRAN. 3977

2,818
To Bth. Mat. Res.
REMAINDER 8800
COG-68 (10) M
24' Bth. Mat. Res. 8483
COG-68 (3) M
20' Bth. Mat. Res.
GE-Brv. 524 AC Sec. A
0771
EXCEPTION
COG-68 (2) M (1970)
20' BIT. MAT. 8532
G-5-52 C (1952)
BIT. MAT. 8532
RTE. 68 MAINT. (1944)
BIT. MAT. 8532
G-8-1 (1941)
Oil Agg. Treat. 4580
N.R. 420 A (1934)
30' GE & GRAN. 4580
G-8-2 (1941)
Oil Agg. Tr. 3552
N.E.S. 408 (1934)
30' GE & GRAN. 3552
G-8-3 (1922)
GRAN. 3553
G-8-4 (1922)
GRAN. 3553
EXCEPTION TO SEC. C
1000
G-8-5 (1922)
SEC. B-000
58-0040
G-8-6 (1922)
SEC. C
0961
REMAINDER 0571

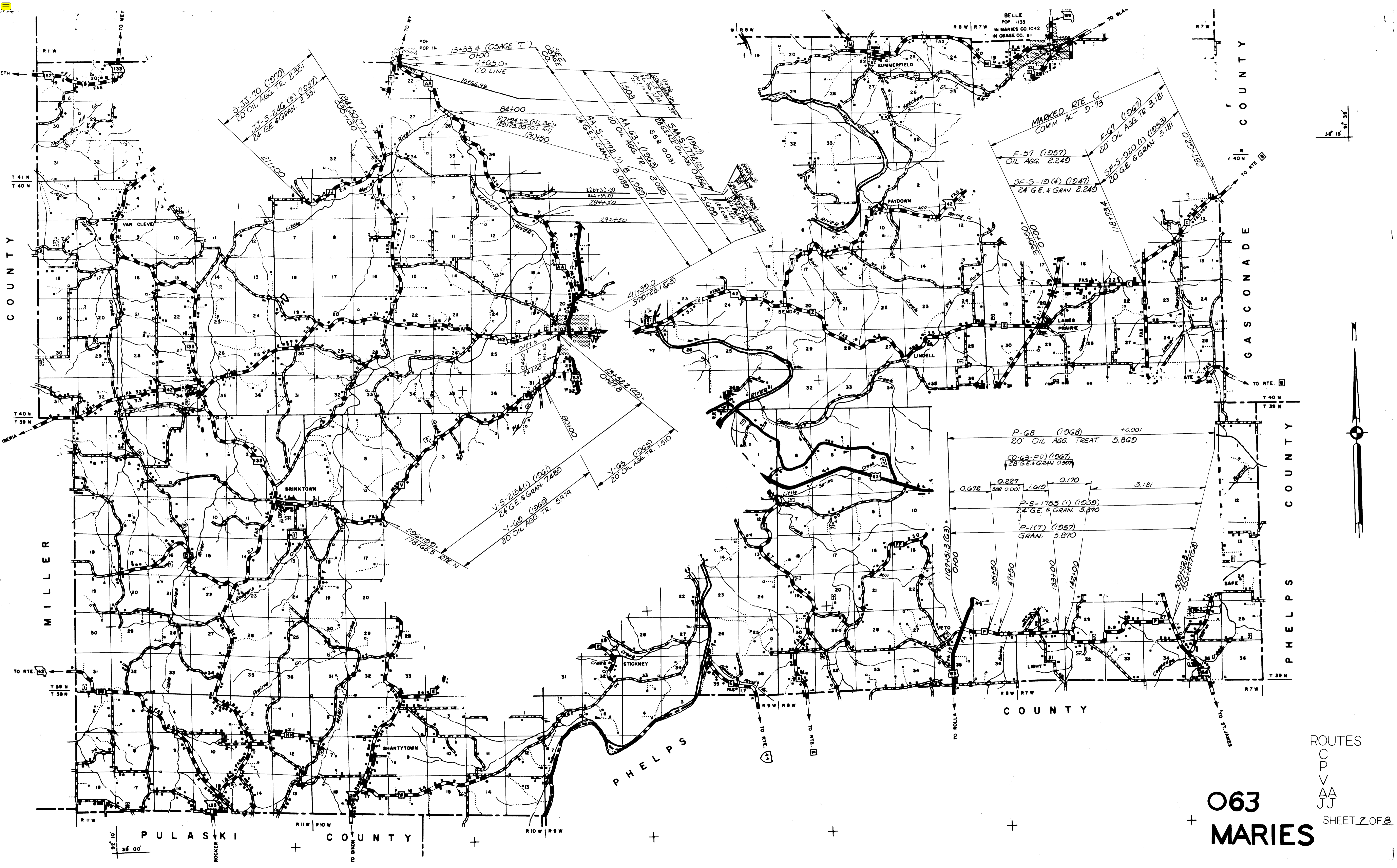
309+58.0
0700
58B-62 (1962)
20' Oil Agg. Tr. 5555
58B-5-1025 (C) (1957)
24' GE & GRAN. 5555
58B-17 (1956)
GRAN. 5556

W-65 (1965)
20' Oil Agg. Tr. 3382
SH-5-1064 (1) (1958)
24' GE & GRAN. 3382
W-1 (7) (1958)
GRAN. 3382

O63
MARIES

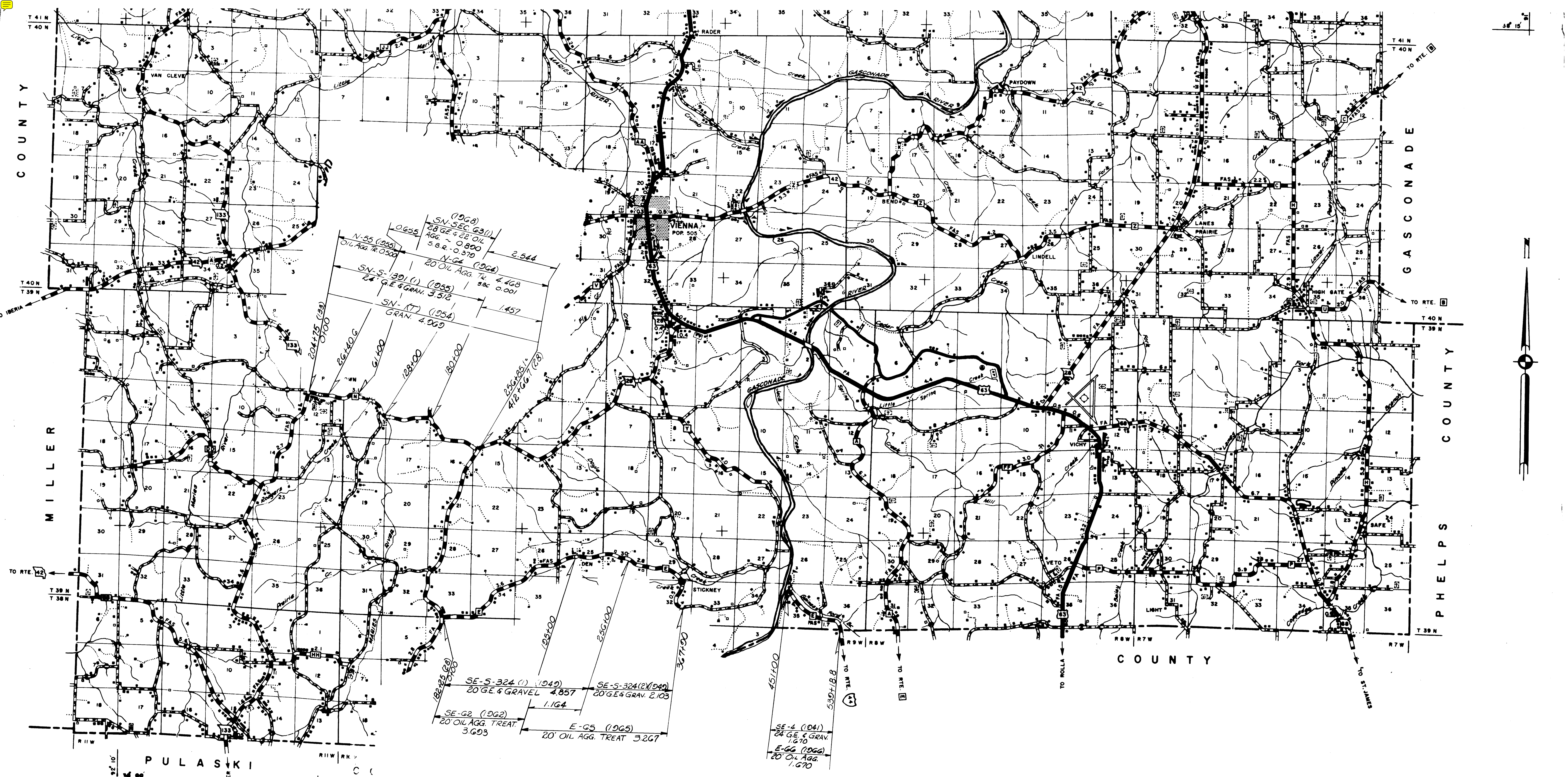
ROUTES
68
89
W
Y
BB

SHEET 6 OF 8



O63
MARIES

ROUTES
C
P
V
AA
JJ
SHEET 7 OF 8



ROUTES
E
N

O63
MARIES

SHEET 8 OF 8